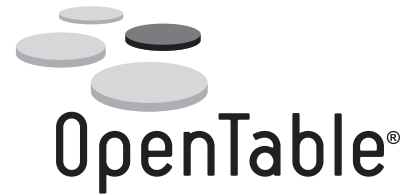


Annual Report 2011



Dear Shareholders,

This is our first shareholder letter since my appointment to CEO, and it comes just shy of my one-year anniversary in this role and my seven-year anniversary with OpenTable.

As we look back on 2011, we're pleased with the progress we made in expanding our network of both restaurants and diners. Our installed base of restaurants grew to more than 25,000, representing a year-over-year increase of 25 percent, and the 96.7 million diners we seated during the year represented year-over-year growth of 48 percent.

The momentum in our key metrics drove strong financial growth. Revenue for the year totaled \$139.5 million, representing a 41 percent year-over-year growth rate. In our North American business, revenue grew by 32 percent over last year to \$118.7 million. In our earlier stage International operations, revenue grew by 135 percent over the prior year to \$20.9 million. In our earlier stage International operations, revenue grew by 135 percent over the prior year to \$20.9 million and reflects our first full year of results since the completion of our acquisition of the UK's leading restaurant destination site, toptable.com.

At a high level, there are a number of factors that drove this performance and supported the business:

- We continue to deliver strong value to our restaurant customers by helping them optimize their front-of-house operations, provide excellent hospitality, and grow their diner base, which, in turn, helps them boost their business and generate more revenue. To achieve this we remain focused on:
 - Providing restaurants with the best-in-class Electronic Reservation Book (ERB) and guest management solution.
 - Delivering an elegant online reservation solution that integrates with restaurant websites and ERBs.
 - Helping restaurants fill seats that would otherwise go empty through participation in the OpenTable network, which includes our website, mobile solutions and network of nearly 600 partners, including Bing, Google, TripAdvisor, Yahoo!, Yelp and Zagat.
- We continue to delight diners by providing them with the ability to quickly and easily find and book reservations at the most popular local restaurants along with valuable content, such as diner reviews and best-of lists, to help them choose a dining destination.
- Mobile is an increasingly important part of our business. By year-end, we had seated nearly 20 million diners cumulatively through our mobile solutions, and mobile reservations represented 16 percent of our total reservations in the fourth quarter. We continued to bolster our portfolio of mobile products for diners, including the launch of our second generation mobile website, a new app for the Android Honeycomb tablet and upgrades to our popular iPhone and iPad apps.
- We made good progress in our International segment, growing both our restaurant base and online reservations.
 - In the UK, our acquisition of toptable.com allows us to combine OpenTable real-time reservation technology with the UK's most popular consumer destination site for restaurant reservations. Even as we continue our work on combining the two businesses, this integrated solution is clearly resonating with our restaurant customers. In fact, we are already seeing a

positive impact on our ability to attract more marquee restaurants to the network, including a number of competitive displacements.

- In Germany, where there is no established consumer destination site for restaurant reservations, our focus is on leveraging both our ERB and Connect products to add the best restaurants in major metropolitan cities. We're pleased that our installed base of German restaurants more than doubled over the year and that a growing number of German restaurants have embraced the ERB and are using it to optimize their reservation and guest management functions.
 - We also saw our restaurant customer base more than double in Japan. In this particular market, we're continuing to focus on sales of our Connect product to help build out our restaurant selection faster.
- The OpenTable Reviews program has generated more than 10 million reviews by verified diners, establishing OpenTable.com as one of the largest and most trusted sources for restaurant reviews.
 - Our North America business continued to demonstrate strong financial operating leverage even after we invested in a number of growth initiatives.

There are also a number of things that we're watching and working on in the business:

- Our International segment continues to be relatively early in its development, and we are still in an investment mode. We also face aggressive competition in each market. While we're pleased with our progress to date, we continue to watch this investment and the marketplace closely.
- We executed against key integration deliverables throughout 2011; however, in 2012 we will continue to expend technology resources to fully realize the potential for combining the restaurant and diner networks of toptable.com with our existing UK business.
- We believe that the ability to test and iterate on new offerings is essential to maintaining robust solutions for restaurants and diners. We are pursuing opportunities to increase the pace of our development efforts to support a higher velocity of innovation.
- Although our restaurant customers continue to give us good service ratings, we believe that we have an opportunity to improve by providing richer reporting tools and analytics as well as increasing our client service touch points. As a result, we have been increasing our investments in both development resources and our restaurant-relations team.
- As expected, as we continue to grow and demonstrate strong financial performance we continue to see an increase in new market entrants competing with our business.

The 89.5 million diners seated through OpenTable in North America during 2011 represented only 12 percent of the estimated 725 million diners seated through reservations in the industry. With this perspective, we believe we are just at the beginning of realizing the very large opportunity in the business.

Lastly, we would like to thank our employees, our restaurant customers, our diners and our investors for their support throughout the year.



Matt Roberts
President and Chief Executive Officer
OpenTable, Inc.

**UNITED STATES
SECURITIES AND EXCHANGE COMMISSION**
WASHINGTON, D.C. 20549

FORM 10-K

(Mark One)

ANNUAL REPORT PURSUANT TO SECTION 13 OR 15(d) OF THE SECURITIES EXCHANGE ACT OF 1934

For the fiscal year ended December 31, 2011

or

TRANSITION REPORT PURSUANT TO SECTION 13 OR 15(d) OF THE SECURITIES EXCHANGE ACT OF 1934

For the transition period from _____ to _____

Commission file number 001-34357

OPENTABLE, INC.

(Exact name of registrant as specified in its charter)

Delaware

(State or other jurisdiction of
incorporation or organization)

94-3374049

(I.R.S. Employer
Identification Number)

799 Market Street, 4th Floor San Francisco, CA
(Address of principal executive offices)

94103
(Zip Code)

(415) 344-4200

(Registrant's telephone number, including area code)

Securities registered pursuant to Section 12(b) of the Act:

(Title of each class)

(Name of each exchange on which registered)

Common Stock, \$0.0001 par value

The NASDAQ Stock Market LLC

Securities registered pursuant to Section 12(g) of the Act: **None.**

(Title of Class)

Indicate by check mark if the registrant is a well-known seasoned issuer, as defined in Rule 405 of the Securities Act. Yes No

Indicate by check mark if the registrant is not required to file reports pursuant to Section 13 or Section 15(d) of the Exchange Act. Yes No

Indicate by check mark whether the registrant (1) has filed all reports required to be filed by Section 13 or 15(d) of the Securities Exchange Act of 1934 during the preceding 12 months (or for such shorter period that the registrant was required to file such reports), and (2) has been subject to such filing requirements for the past 90 days. Yes No

Indicate by check mark whether the registrant has submitted electronically and posted on its corporate Web site, if any, every Interactive Data File required to be submitted and posted pursuant to Rule 405 of Regulation S-T (§232.405 of this chapter) during the preceding 12 months (or for such shorter period that the registrant was required to submit and post such files). Yes No

Indicate by check mark if disclosure of delinquent filers pursuant to Item 405 of Regulation S-K is not contained herein, and will not be contained, to the best of registrant's knowledge, in definitive proxy or information statements incorporated by reference in Part III of this Form 10-K or any amendment to this Form 10-K.

Indicate by check mark whether the registrant is a large accelerated filer, an accelerated filer, a non-accelerated filer, or a smaller reporting company. See the definitions of "large accelerated filer," "accelerated filer" and "smaller reporting company" in Rule 12b-2 of the Exchange Act. (Check one):

Large accelerated filer

Accelerated filer

Non-accelerated filer
(Do not check if a
smaller reporting company)

Smaller reporting company

Indicate by check mark whether the registrant is a shell company (as defined in Rule 12b-2 of the Exchange Act). Yes No

As June 30, 2011 (the last business day of the registrant's most recently completed second fiscal quarter), the aggregate market value of voting stock held by non-affiliates of the registrant was \$1,894,568,000.

As of February 21, 2012, the number of shares of the registrant's common stock outstanding was 22,551,126.

Documents Incorporated by Reference

Portions of the registrant's definitive proxy statement for its 2012 annual meeting of stockholders are incorporated by reference in Items 10, 11, 12, 13 and 14 of Part III.

OPENTABLE, INC.
INDEX TO FORM 10-K

	<u>Page</u>
PART I	
Item 1. Business	2
Item 1A. Risk Factors	14
Item 1B. Unresolved Staff Comments	29
Item 2. Properties	29
Item 3. Legal Proceedings	29
Item 4. Mine Safety Disclosures	30
PART II	
Item 5. Market for Registrant’s Common Equity, Related Stockholder Matters and Issuer Purchases of Equity Securities	30
Item 6. Selected Consolidated Financial Data	33
Item 7. Management’s Discussion and Analysis of Financial Condition and Results of Operations	35
Item 7A. Quantitative and Qualitative Disclosures About Market Risk	50
Item 8. Consolidated Financial Statements and Supplementary Data	51
Item 9. Changes in and Disagreements with Accountants on Accounting and Financial Disclosure	87
Item 9A. Controls and Procedures	87
Item 9B. Other Information	90
PART III	
Item 10. Directors, Executive Officers and Corporate Governance	90
Item 11. Executive Compensation	90
Item 12. Security Ownership of Certain Beneficial Owners and Management and Related Stockholder Matters	90
Item 13. Certain Relationships and Related Transactions and Director Independence	90
Item 14. Principal Accounting Fees and Services	90
PART IV	
Item 15. Exhibits and Financial Statement Schedules	91
SIGNATURES	
Signatures	94

PART I

SPECIAL NOTE REGARDING FORWARD-LOOKING STATEMENTS

This report includes forward-looking statements. We have based these forward-looking statements largely on our current expectations and projections about future events and financial trends affecting the financial condition of our business. Forward-looking statements should not be read as a guarantee of future performance or results, and will not necessarily be accurate indications of the times at, or by, which such performance or results will be achieved. Forward-looking statements are based on information available at the time those statements are made and/or management's good faith belief as of that time with respect to future events, and are subject to risks and uncertainties that could cause actual performance or results to differ materially from those expressed in or suggested by the forward-looking statements. Important factors that could cause such differences include, but are not limited to:

- our ability to accurately forecast revenues and appropriately plan our expenses;
- the impact of worldwide economic conditions, including the resulting effect on consumer spending;
- our ability to maintain an adequate rate of growth;
- our ability to effectively manage our growth;
- our ability to attract new restaurant customers;
- our ability to acquire new users for our websites and mobile applications;
- our ability to retain existing restaurant customers and diners or encourage repeat reservations;
- the effects of increased competition in our business;
- our ability to keep pace with changes in technology and our competitors;
- our ability to successfully enter new markets and manage our international expansion;
- our ability to provide a high-quality customer experience through our products and services;
- our ability to successfully manage any acquisitions of businesses, solutions or technologies;
- the impact of fluctuations in currency exchange rates;
- the success of our marketing efforts;
- changes in consumer behavior and any related impact on the restaurant industry, especially in the geographic markets in which we operate;
- seasonal patterns in restaurant dining;
- interruptions in service and any related impact on our reputation;
- the attraction and retention of qualified employees and key personnel;
- our ability to protect our intellectual property, including our proprietary ERB and Connect products;
- costs associated with defending intellectual property infringement and other claims;
- our ability to choose and effectively manage third-party service providers;
- the effects of natural or man-made catastrophic events;
- the effectiveness of our internal controls;
- changes in our tax rates or exposure to additional tax liabilities;

- changes in government regulation affecting our business; and
- other risk factors included under “Risk Factors” in this report.

In addition, in this report, the words “believe,” “may,” “will,” “estimate,” “continue,” “anticipate,” “intend,” “expect,” “predict,” “potential” and similar expressions, as they relate to our company, our business and our management, are intended to identify forward-looking statements. In light of these risks and uncertainties, the forward-looking events and circumstances discussed in this report may not occur and actual results could differ materially from those anticipated or implied in the forward-looking statements.

Forward-looking statements speak only as of the date of this report. You should not put undue reliance on any forward-looking statements. We assume no obligation to update forward-looking statements to reflect actual results, changes in assumptions or changes in other factors affecting forward-looking information, except to the extent required by applicable laws. If we update one or more forward-looking statements, no inference should be drawn that we will make additional updates with respect to those or other forward-looking statements.

ITEM 1. BUSINESS

Overview

OpenTable, Inc. (together with its subsidiaries, including toptable.co.uk Ltd., or toptable, which we acquired in October 2010, “OpenTable,” the “Company,” “our,” “we,” or “us”) was incorporated on October 13, 1998, and is a Delaware corporation. We provide solutions that form an online network connecting reservation-taking restaurants and people who dine at those restaurants. Our solutions for restaurants include our proprietary Electronic Reservation Book, or ERB, and Connect. Our solutions for diners include our popular restaurant reservation websites, www.opentable.com and www.toptable.com, as well as a variety of mobile applications. We refer to www.opentable.com, www.toptable.com and related websites as the OpenTable websites. The OpenTable network includes approximately 25,000 OpenTable restaurant customers spanning all 50 states as well as select markets outside of the United States. Since our inception in 1998, we have seated over 280 million diners through OpenTable reservations, and during the three months ended December 31, 2011, we seated an average of approximately 9.0 million diners per month. Restaurants that use our ERB pay us a one-time installation fee for onsite installation and training, a monthly subscription fee for the use of our software and hardware and a fee for each restaurant guest seated through online reservations. Restaurants that use Connect pay us a fee for each restaurant guest seated through online reservations. Diners can use our online restaurant reservation service for free. For the twelve months ended December 31, 2011 and 2010, our net revenues were \$139.5 million and \$99.0 million, respectively. For the twelve months ended December 31, 2011 and 2010, our reservation revenues accounted for 53% and 48% of our total revenues, respectively, our subscription revenues accounted for 36% and 44% of our total revenues, respectively, and our other revenues accounted for 11% and 8% of our total revenues, respectively.

The ERB combines proprietary software and computer hardware to deliver a solution that computerizes restaurant host-stand operations and replaces traditional pen-and-paper reservation books. Our ERB streamlines and enhances a number of business-critical functions and processes for restaurants, including reservation management, table management, guest recognition and email marketing. This enables restaurants to manage all of their reservations—those booked by phone or online as well as walk-in diners—in one unified system. The ERB also automatically accepts online reservations in real time directly from the OpenTable websites as well as from our mobile applications and the websites and mobile applications of our partners and restaurant customers. The ERBs at our restaurant customers connect via the Internet to form an online network of restaurant reservation books.

For restaurants that do not require the operational benefits of the ERB, we offer Connect, a web-based solution that enables participating restaurants to receive reservations from OpenTable websites and mobile applications as well as the websites and mobile applications of our partners and restaurant customers.

For diners, the OpenTable websites and mobile applications enable them to quickly and conveniently find, choose and book tables at restaurants on the OpenTable network, overcoming the inefficiencies associated with the traditional process of reserving by phone. Diners appreciate the convenience of being able to secure a reservation at any time, even when the restaurant is closed, and the time savings of being able to instantly find and reserve available tables without having to call restaurants one by one until they find an available reservation that suits their needs. Online visitors come to the OpenTable websites and mobile applications directly, via search engine results and via our partners' and restaurant customers' websites and mobile applications.

We initially focused on acquiring a critical mass of local restaurant customers in four metropolitan areas: Chicago, New York, San Francisco and Washington, D.C. These markets have since developed into active, local networks of restaurants and diners that have continued to grow. We have applied and continue to apply the same fundamental strategy in developing and penetrating our other markets in the United States, Canada and Mexico. In 2004, we began to selectively expand into countries outside of North America that are characterized by large numbers of online consumer transactions and reservation-taking restaurants. To date, we have concentrated our international efforts in Germany, Japan and the United Kingdom. Our revenues outside of North America for the twelve months ended December 31, 2011 and 2010, were \$20.9 million and \$8.9 million, respectively, or 15% and 9% of our total revenues, respectively.

We measure our business geographically based on two segments: North America and International. Additional information required by this item is incorporated herein by reference to Note 13—"Segment Information" of the Notes to the consolidated financial statements, beginning on page 68 of this Form 10-K.

Restaurant Industry Background

The commercial restaurant industry is broadly divided into "quick-service" and "full-service" segments. We target our offerings to full-service restaurants that accept reservations. We believe based on our internal estimates that our ERB has a target audience of approximately 35,000 restaurants and Connect has a target audience of approximately 20,000 restaurants in North America. In 2011, we believe these restaurants seated approximately 725 million diners through reservations, though this number may fluctuate annually with economic and other conditions.

The ability of the restaurant industry to leverage the power of the Internet for reservation transactions has been inhibited by two key characteristics. First, the reservation-taking restaurant industry has been slow to computerize host-stand operations. During the last decade, other reservation-taking industries, such as airlines and hotels, have experienced a dramatic shift in consumer behavior as reservations have migrated from the phone to the Internet. In contrast, given the restaurant industry's relatively basic transaction needs, generally requiring only the diner's name and phone number and no advance payment, restaurant reservations historically have been largely handled by the traditional pen-and-paper reservation book, despite the inherent operational inefficiencies and potential for error. Second, the reservation-taking restaurant industry is highly fragmented, with independent restaurants and small, local restaurant groups comprising a significant majority of restaurant locations. Unlike other industries in which suppliers can deliver goods and services to customers around the world, the restaurant industry is inherently local. These conditions make it time-consuming and costly to aggregate the breadth of local restaurant table inventory required to attract a critical mass of diners to make reservations online and to create an online restaurant reservation network.

In addition, reservation-taking restaurants generally share the following operational challenges:

- *Profitability is dependent on filling seats.* Because restaurants typically have a high fixed cost structure, restaurant profitability is heavily dependent on filling as many seats as possible. Similar to hotel rooms and airplane seats, restaurant table inventory is highly perishable, with unfilled seats representing a significant lost revenue opportunity.
- *Prospective business is lost due to the inefficiencies of reserving by phone.* Most restaurants are not staffed to answer the phone until late morning or early afternoon, and many are only open six days per week. As a result, they lose potential business when prospective guests are not able to secure reservations by phone at their convenience. Additionally, restaurants experience costly “no-shows” when guests fail to cancel their reservations because of the inconvenience of doing so over the phone.
- *Managing and preserving guest information is difficult.* One of the ways in which restaurants compete is by providing exceptional, personalized service, for example, by recognizing repeat diners and recalling their preferences or special occasions. Guest histories and preferences are typically stored in the memories of the maitre'd or host, and therefore the implications of losing a staff member who is familiar with a restaurant's best and most frequent guests are considerable. In an industry characterized by a high rate of employee turnover, the ability to preserve and transfer this information is critical.
- *Information technology resources to install and support computer-based systems are limited.* Few restaurants have the resources or time to install computer systems and troubleshoot problems with computer systems or Internet connectivity. At the same time, the fast pace of business operations means that restaurants cannot tolerate service interruptions from an equipment or networking failure.
- *Marketing opportunities with measurable results are limited.* Typically, restaurants promote themselves through magazines and newspapers as well as online dining guides and directories. However, restaurants generally do not have the ability to track the number of people who ultimately dine in response to their advertisements, nor are the costs of these advertisements tied to the number of diners they attract. Therefore, restaurants usually are unable to measure or compare the effectiveness of these marketing channels.

Diner Behavior and Trends

For many diners, part of the appeal of dining out is experiencing a variety of restaurants. Therefore, diners value sources that help them discover new restaurants and provide information about these restaurants. Historically, diners learned about restaurants through word of mouth and local print media, such as dining guides, newspapers and magazines. While diners continue to value personal recommendations, the Internet now puts a wealth of restaurant information at their fingertips. However, arguably the most important piece of information—what restaurants can accommodate a dining party—has been missing from online dining sources. As a result, when it comes to booking a restaurant reservation, diners have had to use the phone instead of the Internet.

Reserving by phone can be a highly inefficient and inconvenient process, requiring diners to call one restaurant at a time until they find an available reservation that meets their needs, and then make a reservation without knowing the full range of available choices. Phone reservations can only be secured during the restaurant's business hours. Diners who call when a restaurant is closed or during peak service hours oftentimes must leave a voicemail message and wait for the restaurant to call back. Diners who do get through to a reservationist may be put on hold or informed that there are no available tables at the desired time, requiring them to call another restaurant and repeat the process

until they find a suitable reservation. Diners who need to change or cancel an existing reservation experience similar difficulties in doing so by phone.

The Internet has the potential to redefine the reservation experience for diners and streamline the operations and increase the return on marketing spend for reservation-taking restaurants. In order for diners to fully embrace online restaurant reservations, they need real-time access to table inventory across a broad selection of local restaurants and the ability to instantly book confirmed reservations around-the-clock.

Our Solution

Reservation-taking restaurants and diners have interconnected needs. Restaurants require cost-effective ways to attract guests and manage their reservations, while diners seek convenient ways to find available restaurants, choose among them and secure reservations. By creating an online network of restaurants and diners that can transact with each other through real-time reservations, we have developed a specialized platform for addressing the needs of both.

Essential to this network is building a critical mass of local, computerized restaurant reservation books. We achieve this by offering to reservation-intensive restaurants software that provides them with important operational benefits, bundling it with computer hardware and installing this solution at the restaurant host stand. For restaurants that primarily serve walk-in diners, we offer a web-based system to fill more seats by offering online reservations through the OpenTable websites. We sell our solutions to individual restaurants within a market, typically one by one, via a direct sales force. We believe that we deliver a strong return on investment for our restaurant customers by filling additional seats, streamlining their operations, and improving their quality of service. As a result, we have historically enjoyed high retention rates.

The OpenTable websites and mobile applications give diners real-time access to tables at restaurants on the OpenTable network that use ERB or Connect. As more local restaurants are added to the network, the utility provided to diners increases and more diners discover the benefits of researching restaurants and making reservations on our website and mobile offerings. The more diners who use our services to make their dining decisions, the more value we deliver to our restaurant customers and the more restaurants are attracted to our network.

Benefits of OpenTable to Reservation-Taking Restaurants

In response to the needs of reservation-taking restaurants, we offer the ERB, an integrated solution consisting of proprietary OpenTable software which is installed on a touchscreen computer system and supported by various asset-protection and security tools. For restaurants that do not require the operational benefits of the ERB, we offer Connect, a web-based service that enables them to receive online reservations. Both offerings provide restaurants with access to diners via the OpenTable websites as well as through our mobile applications and the websites and mobile applications of, our partners and restaurants customers. Participation in the OpenTable network helps restaurants:

- *Fill seats that might otherwise remain empty.* We help restaurants fill their seats by offering the convenience of online reservations directly through the OpenTable websites as well as through our mobile applications and indirectly through the websites and mobile applications of our partners and restaurant customers. In addition, restaurants may elect to be featured in OpenTable marketing programs, which drive incremental business to participating restaurants through enhanced website listings or email promotions. Restaurants pay additional fees to OpenTable to participate in these programs.
- *Create operational efficiencies by automating reservations and table management.* The reservation module of the ERB replaces the restaurant's pen-and-paper system with a computerized

reservation book that records and tracks all reservations (online, phone and walk-in) in the same system, thereby improving accuracy and efficiency. Floor management capabilities improve operational efficiencies by helping restaurants maximize seat utilization, facilitate server rotations and improve table turns.

- *Boost guest recognition and overall guest service.* The integrated guest-management database included in the ERB enables restaurant staff to record diner preferences and histories in order to recognize repeat diners and provide them with personalized service. The ERB also includes email capabilities which provide restaurants with a cost-effective channel to reach and attract repeat diners. Additionally, we help restaurants monitor customer satisfaction by collecting and delivering guest feedback from OpenTable diners.
- *Computerize host-stand operations with customized, on-site installation and training and technical support.* We install our ERB, which combines proprietary software and computer hardware, at the restaurant, verifying Internet connectivity, configuring the system for the restaurant's unique needs and training staff members on its use. We monitor Internet connectivity and assist the restaurant in resolving connectivity issues. Additionally, we perform nightly data backups that enable us to restore the reservation book if necessary, and we provide around-the-clock technical support.
- *Market to a targeted audience with measurable results.* The OpenTable websites and mobile applications enable diners to find restaurants that can accommodate them, giving restaurants valuable marketing exposure during the diners' decision-making process. Moreover, restaurants pay OpenTable only for those diners whom they ultimately serve, unlike other marketing channels such as magazines, newspapers and online dining guides and directories. Consequently, restaurants know the number of diners acquired through OpenTable and the costs of acquiring each of these diners.

Benefits of OpenTable to Diners

In response to the needs of diners, we offer the OpenTable websites and mobile applications for those seeking a convenient way to research restaurants and make reservations. Our websites and mobile applications enable diners to:

- *Find available tables.* Diners can search for reservations by location, date, time and party size and view table availability across a variety of restaurants. Communication between our websites and mobile applications and the thousands of ERB and Connect solutions residing at OpenTable restaurants allows reservation search results to reflect real-time availability.
- *Choose a restaurant.* In response to their searches on the OpenTable websites or via our mobile applications, diners are presented with a list of restaurants with available reservations at their desired dining times. Diners may also click on a restaurant listing to view additional information, including restaurant descriptions, photos and menus. While making their restaurant choices, diners using our websites may also consult the OpenTable Diners' Choice lists that highlight restaurants that are most highly rated by OpenTable diners, for example, Best Overall, Best Italian, Most Romantic or Good for Groups.
- *Book instantly confirmed reservations for free.* When a diner reserves through the OpenTable websites or mobile applications, the reservation is instantly recorded in the restaurant's OpenTable solution. Diners can change or cancel reservations online as well as invite guests via email. Diners receive on-screen and email messages confirming their reservation details. Additionally, registered diners can earn Dining Reward Points when they make and honor OpenTable reservations. Points can be redeemed for Dining Checks that are accepted at OpenTable restaurant customers.

Our Strategy

As our network of reservation-taking restaurants and diners grows, the value we deliver grows as well. Because the foundation of our network is building a critical mass of computerized reservation books, we enhance our offering to diners by adding new restaurant customers. In turn, as more diners use OpenTable to make their dining decisions and book their reservations, we deliver more value to our restaurant customers by helping them fill more of their seats. In this process, we grow the value of our business. The key elements of this strategy include:

Continue to Build the OpenTable Network in North America

The value of the OpenTable network grows as participation among restaurants and diners grows. Experience in our earliest markets provides a successful model that we have implemented while entering new markets, and, as a result, our newer markets in North America have grown relatively predictably over time. We intend to continue to build our North American network by employing this proven model.

- *Produce and maintain superior solutions.* We continue to evolve our restaurant solutions based on more than a decade of in-field experience as well as feedback from our installed base of approximately 25,000 restaurant customers. Additionally, we will continue to optimize our websites and mobile applications through insights gained from the experience of seating over 280 million diners through online reservations.
- *Leverage our direct sales force.* Over the last thirteen years, we have expended considerable resources to build a direct sales force skilled at selling the benefits of OpenTable to reservation-taking restaurants, which operate in an industry that is highly fragmented. We will continue to leverage our skilled direct sales force to add more restaurants to the network.
- *Provide excellent customer service and support.* We believe that our superior customer service is an integral component of high retention rates among our restaurant customers and provides us with a deep understanding of restaurant needs and general industry trends. We will continue to employ highly trained operational teams to provide installation and training services for our restaurant customers and augment our in-house support staff with contract support services to deliver superior customer assistance.
- *Continue to attract diners to our websites and mobile applications by offering the best reservation experience.* We believe that providing the best diner reservation experience increases market adoption of our services, builds our brand awareness and drives word-of-mouth referrals to the OpenTable websites. We continue to enhance our websites for ease of use and augment it with unique, helpful restaurant content. For example, we leverage the collective feedback of OpenTable diners to publish user-generated content that diners use while making restaurant choices. We will continue to evolve the diner reservation experience through usability testing and website analytics.

Expand Internationally

We intend to augment our growing North American business by selectively expanding into countries outside of North America that are characterized by large numbers of online consumer transactions and reservation-taking restaurants. We currently have operations in Germany, Japan and the United Kingdom, each supported with a direct sales force and operational staff. We have approximately 8,000 restaurant customers in these markets. In general, our strategy internationally is to replicate the model we have successfully employed in North America. In particular, our initial focus in new international markets is to increase our restaurant customer base, and we believe the localized versions of our solutions will compete favorably against competitive offerings, enabling us to expand

our network of computerized reservation books across a broad selection of local restaurants. To accelerate the growth of our business in the United Kingdom, on October 1, 2010, we acquired toptable, a leading restaurant reservation site in the United Kingdom.

Our Products

We have created a proprietary technology system that connects our ERB, a stand-alone client server application located at each restaurant, via the Internet to our data centers which host the OpenTable websites, web services and other applications. We also have created Connect, a web-based reservation system. The design of our systems enables us to provide real-time solutions to our restaurant customers and to diners.

Restaurant Software and Hardware and Related Solutions

The ERB is an integrated solution consisting of proprietary OpenTable software that is installed on a dedicated, touchscreen computer system at the restaurant's host stand and supported by various asset-protection and security tools. The ERB supports reservation management, table and floor management, guest management, marketing and a number of other business processes. This functionality has evolved through nine major software releases over thirteen years based on feedback from and experience with thousands of restaurant customers. The software is built on a foundation that supports rapid translation into local languages.

We provide on-site installation, training and, as part of our monthly subscription fee, around-the-clock customer support for the ERB. We monitor Internet connectivity to the ERB, alerting restaurants when they are offline and working with them to resolve any problems we detect. We also provide data protection services, including managing firewalls and virus scanning software on all computers on our network to protect restaurants from harmful intrusions and performing nightly backups of each restaurant's database to prevent data loss in the event of a hardware failure. Our restaurant customers also receive a hardware replacement, populated with the restaurant's backed-up data, in the event of a computer failure, and software upgrades and updates, which are deployed automatically via the Internet to each ERB, requiring minimal interference with the restaurant's operations.

We also offer Connect, a web-based service that enables restaurants to accept online reservations from the OpenTable network as well as through our mobile applications and from the restaurants' own websites. Our restaurant customers log in to Connect to specify available tables by time and party size. New reservations may be conveyed to the restaurant via email, SMS text message and the restaurant's Connect account.

OpenTable Websites

We design, build and operate the OpenTable websites in North America and the United Kingdom as well as websites localized for Germany and Japan. ERB and Connect are real-time reservation systems with a patent pending on our high-speed inventory tracking and search technology. The OpenTable websites maintain around-the-clock communications with restaurants on our online reservation network. As a result, any change made at these restaurants to the table inventory that affects an OpenTable website is updated on the website in real time, and diners using the website get current inventory information on every search request, typically within a few seconds.

In October 2010, we acquired toptable, a company providing a leading restaurant reservation site in the United Kingdom. As a result of the acquisition, we now operate www.toptable.com in the United Kingdom and various other international locations. A subset of the restaurants listed on www.toptable.com do not use ERB or Connect.

Mobile Solutions

We also offer versions of the OpenTable websites optimized for use on mobile devices as well as free mobile applications for use on Amazon Fire, Android, Blackberry, iPad, iPhone, webOS, and Windows Phone smartphones. These mobile applications leverage the OpenTable network to enable diners on-the-go to view real-time table availability at restaurants that use ERB and Connect in their vicinity and book free, confirmed reservations. To date, over 20,000,000 diners have been seated through reservations booked via OpenTable mobile applications.

Restaurant Marketing Products

We offer our restaurant customers additional services to help fill more seats in their dining rooms. Our POP program lets restaurants offer diners bonus Dining Reward Points for reservations at select times. Participating restaurants pay a premium per-seated-diner fee for POP reservations. For restaurants with banquet spaces, we offer premium listings on our Private Dining directories.

Table Maestro

In August 2010, we acquired Table Maestro, a South Carolina based company that operates a telephone reservation management service for restaurants. Table Maestro provides restaurants with a lower-cost alternative to dedicated, in-house reservationists.

OTRestaurant.com—Our Website for Restaurant Customers

We design, build and operate the OTRestaurant website, which serves as an information and services portal for OpenTable restaurant customers. The website provides restaurant customers with secure access to client-specific materials including detailed online reservation reports, online invoicing and feedback forms from recent diners. In addition, a restaurant can visit the OTRestaurant website to learn about upcoming OpenTable promotions, submit date-specific information such as Valentine's Day menus and update the profile information displayed on the OpenTable websites such as restaurant description and hours of operation. The OTRestaurant website serves as a two-way communication channel between us and our restaurant customers, which ultimately improves the support we provide and drives increased operational efficiencies.

Sales and Marketing

Sales and Marketing to Restaurants

We employ a direct sales force of regional account executives and sales representatives as well as a team of inside sales representatives. Our sales and marketing efforts focus on identifying qualified sales leads, communicating the benefits of computerizing the restaurant reservation book and filling seats through online reservations. Our marketing activities include lead generation, direct marketing, public relations and participation in trade shows and conferences.

Marketing to Diners

We generally benefit from significant word-of-mouth referrals and natural-search traffic to the OpenTable websites. We encourage repeat usage through our points-based loyalty program, OpenTable Dining Rewards, which allows diners to earn Dining Points when they make and honor OpenTable reservations. We also optimize our websites to improve our positioning in natural search engine results. To date, we have found limited value in print, broadcast, online or paid-search advertising, and, as a result, we do not purchase a material amount of marketing from those channels.

In addition to operating our own destination websites and mobile applications, we work with hundreds of partners to enhance their restaurant listings with OpenTable online reservation capabilities.

We also encourage our restaurant customers to incorporate OpenTable reservation capabilities into their own websites, which not only introduces diners to the convenience of online reservations but also helps restaurants fill more seats by providing around-the-clock reservation capabilities.

Customer Support

One of the reasons we enjoy high retention rates among our restaurant customers is the quality of the support we provide. This support includes the following:

- *Implementation Services for Restaurants.* Once the customer agreement is signed, we contact the restaurant to begin the implementation process, including system installation and training. First, we conduct a site survey to gather restaurant-specific information such as table layouts, restaurant capacity, hours of operation, network and Internet connectivity requirements, and other information necessary to properly set up the OpenTable system. During a typical ERB installation, we load the software onto OpenTable hardware, establish proper network connectivity, configure the system to a restaurant's specific needs, and train restaurant staff on the new process. For Connect implementations, a personal visit to the restaurant is not needed because the product and network configuration is simpler. A customer uses his or her own computer and Internet connection. The site survey, training and other implementation activities are conducted over the telephone.
- *Ongoing Restaurant Relationship Management.* We work with our restaurant customers to ensure that the restaurant realizes the full value of the system. For example, we assist restaurants in adjusting their reservation books to maximize capacity utilization, enabling a restaurant's own website to take online reservations, tracking guest preferences and marketing to their diners.
- *Restaurant Telephone Support.* After the initial installation and training, restaurants may contact OpenTable via a toll-free number to receive technical support and follow-up training as part of our monthly service fee. Live telephone support is available 14 hours per day, seven days a week, with emergency support available around-the-clock.

Most routine support cases are handled by a U.S.-based third-party customer support partner. When necessary, the support partner escalates calls to our in-house support team located at our headquarters in San Francisco. Our support partner receives equivalent training and access to the same tools as the San Francisco support team.

- *Consumer Support for Website Users.* Diners with questions about OpenTable have access to an online list of frequently asked questions, or FAQs, and can also email our support team via a web-based form. We use a commercially available email management system to queue, assign, track, escalate, categorize and report on these email inquiries.
- *Reservation Fulfillment for toptable Venues.* Diners making reservations through our toptable website occasionally require assistance completing their reservations because certain restaurants listed on the toptable website are not supported by ERB or Connect.

Technology

Our technology infrastructure supports the network of restaurants and diners critical to our business.

Data Centers and Network Access

Our primary data center is hosted by a leading provider of hosting services in Santa Clara, California. We maintain a second data center in Georgia for disaster recovery. Backup systems in the

second data center can be brought online in the event of a failure in the primary data center. We also operate a data center in London that supports toptable.

The data center in Santa Clara hosts the OpenTable websites, other than www.toptable.com and related websites, the OTRestaurant website and intranet applications that are used to manage the website content. The websites are designed to be fault-tolerant, with a collection of identical web servers connecting to an enterprise database. The design also includes load balancers, firewalls and routers that connect the components and provide connections to the Internet. The failure of any individual component is not expected to affect the overall availability of our websites.

Our system also includes a proprietary method of accessing website-relevant, real-time restaurant inventory from the data center, providing very fast response times. The system is designed to scale to accommodate the foreseeable growth in the number of restaurants and diners on our network.

Network Security

The data center and restaurant systems maintain real-time communication with proprietary, encrypted message protocols. We also use leading commercial antivirus, firewall and patch management technology to protect and maintain the systems located at the data center and at each restaurant.

Internal Management Systems

We have developed proprietary systems to ensure rapid, high-quality customer service, software development and website updates. The Restaurant Operations Management System, or ROMS, is a system-integrated customer support application that gives us unique customer resource management tools designed specifically for the restaurant industry. It houses detailed restaurant customer information encompassing the entire customer lifecycle, including initiating a contract, installing the OpenTable system, issuing monthly bills, tracking restaurant inventory and providing ongoing support. In addition, ROMS leverages system-integrated tools allowing for remote technical diagnosis and repair, while operating under multi-tiered security protocols to ensure restaurant customer information is protected. The Customer Help and Restaurant Management system, or CHARM, is a proprietary web content management and consumer support tool that enables rapid website customization. Restaurant profiles, descriptions, maps, partner reviews, restaurant messaging and reservation parameter configurations are all driven out of CHARM.

Development

We devote a substantial portion of our resources to developing new solutions and enhancing existing solutions, conducting product testing and quality assurance testing, improving core technology and strengthening our technological expertise in the restaurant table management and reservation market. As of December 31, 2011, our technical group consisted of 103 employees, who are focused on new feature development for existing solutions and the design of new solutions. We also outsource a portion of our software development to a third-party service provider located in India. Additionally, our mobile website and application development efforts are partially outsourced to third-party mobile development firms. For the twelve month periods ended December 31, 2011, 2010, and 2009, technology expenses totaled \$14.7 million, \$12.3 million and \$10.0 million, respectively.

Seasonality

The restaurant industry business is somewhat seasonal, with increases in dining at reservation-taking restaurants tied to certain holidays and restaurant-industry promotions. As a result, we typically experience higher sequential growth in diners seated during the first and fourth quarters, as compared with the second and third quarters.

Intellectual Property

Our success depends upon our ability to protect our core technology and intellectual property. To accomplish this, we rely on a combination of intellectual property rights, including trade secrets, patents, copyrights and trademarks, as well as contractual restrictions. We enter into confidentiality and proprietary rights agreements with our employees, consultants and business partners, and we control access to and distribution of our proprietary information.

We have one issued patent which expires in 2020 and eight patent applications pending in the United States. We have one patent application pending in India. We intend to pursue corresponding patent coverage in additional countries to the extent we believe such coverage is appropriate and cost effective.

Our registered trademarks in the United States, Japan, Switzerland and the European Union include “OpenTable” and the OpenTable logo. “OpenTable” is also registered in Canada, China, Mexico and Australia. “OpenTable.com” is also registered in the European Union. “toptable” is registered in the United Kingdom. We have filed other trademark applications in the United States and certain other countries.

We are the registrant of the Internet domain name for our websites, www.opentable.com, www.otrestaurant.com, www.toptable.com and our other international websites.

In addition to the foregoing protections, we generally control access to and use of our proprietary software and other confidential information through the use of internal and external controls, including contractual protections with employees, contractors, customers and partners. Our software is protected by United States and international copyright laws.

Competition

Competition for Reservation-Taking Restaurants

The primary competitor for the ERB is the traditional pen-and-paper reservation book. Paper-based reservation books enjoy the advantage of being extremely familiar and simple; however, they are also time-consuming, error-prone, manual and not easily reproduced in case of loss or damage. Through our sales efforts, we explain the benefits of automation to restaurants including greater operational efficiency, superior guest recognition and service and the ability to fill additional seats by offering reservations over the Internet. Other companies attempt to address restaurant needs for computerized reservation management with a variety of technologies.

We believe the principal competitive factors in the market for computerized restaurant reservation management solutions include:

- comprehensive reservation, table and guest management functionality;
- ability to fill incremental seats for the restaurant;
- ability to deliver strong return on investment for restaurant customers;
- pricing;
- system responsiveness and ease-of-use;
- on-site, custom system installation and training;
- robust support; and
- security, reliability and data protection.

The primary competitors for Connect are other products and services that enable restaurants to allocate tables for online booking.

In international markets that we entered more recently and where we have not yet achieved a high degree of penetration, we face more intense competition from local software-development and application service provider, or ASP, vendors. We believe that, over time, the advantages that have established us as a leading provider in North America will help us as we compete in international markets.

Our restaurant marketing products compete with other online discounting and group buying services as well as traditional restaurant marketing opportunities.

Competition for Diners

Our primary competitor for diners making reservations is the phone. The phone enjoys two inherent advantages over online reservations. First, every restaurant and diner has a phone. Second, making reservations by phone is a familiar, ingrained experience for diners.

In order to compete effectively with the phone, the OpenTable websites must offer diners a critical mass of restaurants from which to choose and access to reservation inventory comparable to that available by phone. When combined with the growing number of restaurant customers, the OpenTable online reservation network achieves these requirements by communicating directly and in real time with the OpenTable solution at each restaurant. Additionally, we offer diners all the conveniences and time savings associated with booking reservations online, including the ability to: book reservations around-the-clock, even when restaurants are closed; find available tables in real time across a selection of local restaurants; receive immediate confirmation of the reservation via email; change or cancel reservations online; and earn Dining Reward Points, redeemable for Dining Checks accepted by our restaurant customers.

Secondary competition comes from allocation-based reservation-taking websites that offer diners the ability to book reservations for a limited selection of restaurant table inventory. Participating restaurants identify specific reservations, generally at non-peak and unpopular times, which can be offered for booking via these allocation sites. Unlike OpenTable reservations which are immediately recorded in the ERB residing at the restaurant host stand, these allocation reservations are communicated to the restaurant by traditional phone and fax systems, email or web-based accounts that restaurants can check to access reservation requests. These methods are cumbersome for restaurants that process a large number of reservations because of the operational challenges associated with managing separate systems for online and phone-based bookings. We believe the limitations associated with allocation-based websites make them best suited for restaurants with lower reservation volumes or for use as supplemental services to fill tables at off-peak times. As a result, services that are entirely allocation-based are unlikely to provide diners with the breadth of restaurant selection and prime-time table inventory necessary to attract a large base of users.

Employees

As of December 31, 2011, we had 558 full-time equivalent employees including 192 in operations and support, 180 in sales and marketing, 103 in technology and 83 in general and administrative functions. None of our employees are covered by collective bargaining agreements.

Available Information

We file reports with the Securities and Exchange Commission, or SEC, including annual reports on Form 10-K, quarterly reports on Form 10-Q, current reports on Form 8-K and any other filings required by the SEC. We make available on our website (www.opentable.com) our annual report on

Form 10-K, quarterly reports on Form 10-Q, current reports on Form 8-K, and all amendments to those reports as soon as reasonably practicable after such material is electronically filed with or furnished to the SEC. These materials are available free of charge on or through our website via the Investor Relations page at <http://investors.opentable.com>. References to our website addresses in this report are intended to be inactive textual references only, and none of the information contained on our website is part of this report or incorporated in this report by reference.

The public may read and copy any materials we file with the SEC at the SEC's Public Reference Room at 100 F Street, NE, Washington, DC 20549. The public may obtain information on the operation of the Public Reference Room by calling the SEC at 1-800-SEC-0330. The SEC maintains an Internet site (<http://www.sec.gov>) that contains reports, proxy and information statements, and other information regarding issuers that file electronically with the SEC.

ITEM 1A. RISK FACTORS

Investing in our common stock involves a high degree of risk. You should carefully consider the risks described below and the other information in this Annual Report on Form 10-K. If any of such risks actually occur, our business, operating results or financial condition could be adversely affected. In those cases, the trading price of our common stock could decline and you may lose all or part of your investment.

Risks Related to Our Business

Our limited operating history makes it difficult for us to accurately forecast revenues and appropriately plan our expenses.

We were formed in October 1998 and have a limited operating history. As a result, it is difficult to accurately forecast our revenues and plan our operating expenses. We base our current and future expense levels on our operating forecasts and estimates of future revenues from restaurants. Restaurants that use our Electronic Reservation Book, or ERB, pay us an installation fee, a monthly subscription fee and a fee for each restaurant guest seated through online reservations. Restaurants that use Connect pay us a fee for each restaurant guest seated through online reservations. Revenues and operating results are difficult to forecast due to the uncertainty of the volume and timing of obtaining new restaurant customers and of diners seated through OpenTable reservations. Some of our expenses are fixed, and, as a result, we may be unable to adjust our spending in a timely manner to compensate for any unexpected shortfall in revenues. This inability could cause our net income in a given quarter to be lower than expected.

The impact of worldwide economic conditions, including the resulting effect on consumer spending, may adversely affect our business, operating results and financial condition.

Our performance is subject to worldwide economic conditions and their impact on levels of consumer spending. Some of the factors having an impact on discretionary consumer spending include general economic conditions, unemployment, consumer debt, reductions in net worth, residential real estate and mortgage markets, taxation, energy prices, interest rates, consumer confidence and other macroeconomic factors. Consumer purchases of discretionary items generally decline during recessionary periods and other periods in which disposable income is adversely affected. Because spending for restaurant dining is generally considered to be discretionary, declines in consumer spending may have a more negative effect on our business than on those businesses that sell products or services considered to be necessities. In particular, a significant majority of our restaurant customers are fine-dining restaurants which have been particularly affected by economic downturns.

Unfavorable changes in the above factors or in other business and economic conditions affecting our restaurant customers and diners could result in reduced traffic in some or all of the restaurants that use our solutions, result in fewer reservations made through our websites or the websites of our partners or restaurant customers and lower our profit margins, cause our restaurant customers to go out of business, cause our restaurant customers to terminate their subscriptions to our solutions, request lower pricing for our solutions or default on their payment obligations to us and have a material adverse effect on our financial condition and operating results.

Moreover, the majority of our restaurant customers are located in major metropolitan areas like New York City and the San Francisco Bay Area, and to the extent any one of these geographic areas experiences any of the above described conditions to a greater extent than other geographic areas, the material adverse effect on our financial condition and operating results could be exacerbated.

We expect a number of factors to cause our operating results to fluctuate on a quarterly and annual basis, which may make it difficult to predict our future performance.

Our revenues and operating results could vary significantly from quarter to quarter and year to year because of a variety of factors, many of which are outside of our control. As a result, comparing our operating results on a period-to-period basis may not be meaningful. In addition to other risk factors discussed in this section, factors that may contribute to the variability of our quarterly and annual results include:

- our ability to accurately forecast revenues and appropriately plan our expenses;
- the impact of worldwide economic conditions, including the resulting effect on consumer spending;
- our ability to maintain an adequate rate of growth;
- our ability to effectively manage our growth;
- our ability to attract new restaurant customers;
- our ability to acquire new users for our websites and mobile applications;
- our ability to retain existing restaurant customers and diners or encourage repeat reservations;
- the effects of increased competition in our business;
- our ability to keep pace with changes in technology and our competitors;
- our ability to successfully enter new markets and manage our international expansion;
- our ability to provide a high-quality customer experience through our products and services;
- our ability to successfully manage any acquisitions of businesses, solutions or technologies;
- the impact of fluctuations in currency exchange rates;
- the success of our marketing efforts;
- changes in consumer behavior and any related impact on the restaurant industry, especially in the geographic markets where we operate;
- seasonal patterns in restaurant dining;
- interruptions in service and any related impact on our reputation;
- the attraction and retention of qualified employees and key personnel;

- our ability to protect our intellectual property, including our proprietary ERB and Connect products;
- costs associated with defending intellectual property infringement and other claims;
- our ability to choose and effectively manage third-party service providers;
- the effects of natural or man-made catastrophic events;
- the effectiveness of our internal controls;
- changes in our tax rates or exposure to additional tax liabilities; and
- changes in government regulation affecting our business.

As a result of these and other factors, the results of any prior quarterly or annual periods should not be relied upon as indications of our future operating performance. In addition, our operating results may not meet the expectations of investors or public market analysts who follow our company.

Our recent growth rate will likely not be sustainable and a failure to maintain an adequate growth rate will adversely affect our financial performance and may materially and negatively affect our stock price.

Our revenues have grown rapidly, increasing from \$68.6 million in 2009, to \$99.0 million in 2010, to \$139.5 million in 2011 representing a compound annual growth rate of 43%. We do not expect to sustain our recent growth rate in future periods, and you should not rely on the revenue growth of any prior quarterly or annual periods as an indication of our future performance. If our revenue growth rate declines or our operating expenses exceed our expectations, our financial performance will be adversely affected. Further, if our future growth and operating performance fail to meet investor or analyst expectations, our stock price may be materially and negatively affected.

Growth may place significant demands on our management and our infrastructure.

We have experienced substantial growth in our business. This growth has placed and may continue to place significant demands on our management and our operational and financial infrastructure. As our operations grow in size, scope and complexity, we will need to improve and upgrade our systems and infrastructure to offer an increasing number of customers enhanced solutions, features and functionality. The expansion of our systems and infrastructure will require us to commit substantial financial, operational and technical resources in advance of an increase in the volume of business, with no assurance that the volume of business will increase. Continued growth could also strain our ability to maintain reliable service levels for our customers, develop and improve our operational, financial and management controls, enhance our reporting systems and procedures and recruit, train and retain highly skilled personnel.

Managing our growth will require significant expenditures and allocation of valuable management resources. If we fail to achieve the necessary level of efficiency in our organization as it grows, our business, operating results and financial condition would be harmed.

If we fail to increase the number of our customers and diners or retain existing customers and diners, our revenues and our business will be harmed.

In the twelve months ended December 31, 2011, almost all of our revenues were generated by our restaurant customers. Restaurants that use our ERB pay us a one-time installation fee, a monthly subscription fee for the use of our hardware and software, and a fee for each restaurant guest seated through online reservations. Restaurants that use Connect pay us a fee for each restaurant guest seated through online reservations. Our growth depends in large part on increasing the number of our restaurant customers, increasing the number of users of our websites and mobile applications and then

converting those persons into diners who use our websites and mobile applications to make restaurant reservations. Either category of customers may decide not to continue to use our solutions in favor of other means of reserving tables or because of budgetary constraints, pricing or other reasons.

To grow our base of restaurant customers, we must convince prospective restaurant customers of the benefits of our ERB, Connect and related solutions and encourage them to forego the traditional pen-and-paper reservation book to which they are likely accustomed. Due to the fragmented nature of the restaurant industry, many prospective restaurant customers may not be familiar with our solutions and will generally favor using more traditional methods of taking reservations.

To increase the number of diners who use our websites and mobile applications, we must convince them of the value of our solutions. Our ability to do so is driven in large part by increasing the number of restaurant listings available on our websites and mobile applications and also by making our websites and mobile applications convenient and user-friendly.

We cannot assure you that we will be successful in continuing to expand our restaurant customer base or in continuing to attract diners to make reservations on our websites and mobile applications. Our future sales and marketing efforts may be ineffective. If diners choose not to use our solutions or decrease their use of our solutions or we are unable to attract new diners, listings on our websites and mobile applications could be reduced, search activity on our websites and mobile applications could decline, the usefulness of our solutions could be diminished and we could experience declining revenues.

The markets for our solutions may become more competitive, and there can be no certainty that we will maintain our current restaurant customers and diners or attract new restaurants and diners or that our operating margins will not be affected by competition.

We expect that the competitive environment for our solutions may become more intense as additional companies enter our markets. Currently, our primary competitors are the pen-and-paper reservation book used by most restaurants and the phone used by diners. Secondary competitors include companies which provide computerized reservation management systems with a variety of technologies, as well as allocation-based reservation-taking websites that offer diners the ability to book reservations for a limited selection of restaurant table inventory. These secondary competitors may enhance their technologies to be more competitive, and additional competitors may enter our North America and international markets. Any new competitors could have greater name recognition among restaurants and diners and greater financial, technical and marketing resources. In both North America and international markets, greater financial resources and product development capabilities may allow competitors to respond more quickly to new or emerging technologies and changes in restaurant and diner requirements that may render our solutions obsolete. These competitors could introduce new solutions with competitive price and performance characteristics or undertake more aggressive marketing campaigns than ours. If we lose existing restaurant customers and diners, face downward pricing pressures or fail to attract new restaurants and diners as a result of increased competition, our business, operating results and financial condition could be adversely affected.

Rapid technological changes may render our technology obsolete or decrease the attractiveness of our solutions to our customers.

To remain competitive, we must continue to enhance and improve the functionality and features of our websites, mobile applications, ERB and Connect. The Internet and the online commerce industry are rapidly changing. If competitors introduce new solutions embodying new technologies, or if new industry standards and practices emerge, our existing websites, mobile applications, technology, ERB and Connect may become obsolete. Our future success will depend on our ability to:

- enhance our existing solutions;

- develop and potentially license new solutions and technologies that address the increasingly sophisticated and varied needs of our prospective customers; and
- respond to technological advances and emerging industry standards and practices on a cost-effective and timely basis.

Developing our ERB, Connect, websites, mobile applications and other technology entails significant technical and business risks. We may use new technologies ineffectively, or we may fail to adapt our websites, mobile applications, transaction processing systems and network infrastructure to consumer requirements or emerging industry standards. For example, our website and mobile application functionality that allows searches and displays of reservation availability is a critical part of our service, and it may become out-of-date or insufficient from our customers' perspective or in relation to the search and display functionality of our competitors' websites and mobile applications. If we face material delays in introducing new or enhanced solutions, our customers may forego the use of our solutions in favor of those of our competitors.

We may be unsuccessful in expanding our operations internationally, which could harm our business, operating results and financial condition.

In 2004, we established our European headquarters in London and expanded our North American presence in Canada. In 2006, we opened an office in Tokyo and further expanded our North American presence in Mexico. In 2007, we expanded our European presence with offices in France, Germany and Spain. In 2010, we acquired toptable, a leading restaurant reservation site in the United Kingdom. Our ability to expand internationally involves various risks, including the need to invest significant resources in such expansion, the possibility that returns on such investments will not be achieved in the near future and competitive environments with which we are unfamiliar. Our international operations may not prove to be successful in certain markets. For example, in 2008, we decided to close our offices in France and Spain. In addition, we have incurred and expect to continue to incur significant expenses in advance of generating material revenues as we attempt to establish our presence in particular international markets. Our current and any future international expansion plans we choose to undertake will require management attention and resources and may be unsuccessful. We do not have substantial experience in selling our solutions in international markets or in conforming to the local cultures, standards or policies necessary to successfully compete in those markets, and we must invest significant resources in order to build a direct sales force and operational infrastructure in such markets. Furthermore, in many international markets we are not the first entrant and there exists greater competition with stronger brand names than we have faced in North American markets. Our ability to expand internationally will also be limited by the demand for our solutions and the adoption of the Internet in these markets. Different privacy, censorship and liability standards and regulations and different intellectual property laws in foreign countries may cause our business and operating results to suffer.

Any future international operations may also fail to succeed due to other risks inherent in foreign operations, including:

- difficulties or delays in acquiring a network of restaurant customers in one or more international markets;
- different restaurant preferences and dining patterns than those in North America;
- varied, unfamiliar and unclear legal and regulatory restrictions;
- unexpected changes in international regulatory requirements and tariffs;
- legal, political or systemic restrictions on the ability of U.S. companies to market services or otherwise do business in foreign countries;

- less extensive adoption of the Internet as a commerce medium or information source and increased restriction on the content of websites and mobile applications;
- difficulties in staffing and managing foreign operations;
- greater difficulty in accounts receivable collection;
- currency fluctuations;
- potential adverse tax consequences;
- lack of infrastructure to adequately conduct electronic commerce transactions; and
- price controls or other restrictions on foreign currency.

As a result of these obstacles, we may find it impossible or prohibitively expensive to expand internationally or we may be unsuccessful in our attempt to do so, which could harm our business, operating results and financial condition.

We may be unable to successfully execute our business strategy if we fail to continue to provide our customers with a high-quality customer experience.

A critical component of our strategy is providing a high-quality customer experience for both restaurants and diners. Accordingly, the effective performance, reliability and availability of our ERB, Connect, websites, mobile applications and network infrastructure are critical to our reputation and our ability to attract and retain customers. In order to provide a high-quality customer experience, we have invested and currently intend to continue to invest substantial resources in our ERB, Connect, website and mobile application development and functionality and customer service operations. If we do not continue to make such investments and as a result, or due to other reasons, fail to provide a high-quality customer experience, we may lose restaurants and diners from our network, which could significantly decrease the value of our solutions to both groups. Moreover, failure to provide our customers with high-quality customer experiences for any reason could substantially harm our reputation and adversely affect our efforts to develop as a trusted website and mobile application.

Acquisitions could disrupt our business and harm our financial condition and operating results.

Our success will depend, in part, on our ability to expand our offerings and markets and grow our business in response to changing technologies, customer demands and competitive pressures. In some circumstances, we may determine to do so through the acquisition of complementary businesses, solutions or technologies rather than through internal development, including, for example, our acquisition in October 2010 of toptable, a leading restaurant reservation site in the United Kingdom. The identification of suitable acquisition candidates can be difficult, time-consuming and costly, and we may not be able to successfully complete identified acquisitions. Furthermore, even if we successfully complete an acquisition, we may not be able to successfully assimilate and integrate the business, technologies, solutions, personnel or operations of the company that we acquired, particularly if key personnel of an acquired company decide not to work for us. In addition, we may issue equity securities to complete an acquisition, which would dilute our stockholders' ownership and could adversely affect the price of our common stock. Acquisitions may also involve the entry into geographic or business markets in which we have little or no prior experience. Consequently, we may not achieve anticipated benefits of the acquisitions which could harm our operating results.

We face risks associated with currency exchange rate fluctuations.

For the twelve months ended December 31, 2011, we incurred approximately 30% of our operating expenses in pounds sterling, euros, yen and other foreign currencies, while most of our revenues were denominated in U.S. dollars. Conducting business in currencies other than U.S. dollars subjects us to

fluctuations in currency exchange rates that could have a negative impact on our reported operating results. Fluctuations in the value of the U.S. dollar relative to other currencies affect our revenues, costs and expenses, and operating margins, and result in foreign currency transaction gains and losses. To date, we have not engaged in exchange rate hedging activities. Even if we were to implement hedging strategies to mitigate this risk, these strategies might not eliminate our exposure to foreign exchange rate fluctuations and would involve costs and risks of their own, such as ongoing management time and expertise, external costs to implement the hedging activities and potential accounting implications.

We rely on our marketing efforts to attract new customers and must do so in a cost-effective manner; otherwise our operations will be harmed.

A significant component of our business strategy is the promotion of our websites, mobile applications, ERB and Connect. We believe that the attractiveness of our solutions to our current and potential customers, both restaurants and diners, will increase as new restaurants provide additional restaurant listings and diners increasingly use our websites and mobile applications to conduct searches and make restaurant reservations. This is because an increase in the number of restaurant listings and the number of diners searching those listings increases the utility of our websites and mobile applications and their associated search, listing and reservation services. If we do not continue to grow the use of our websites, mobile applications, ERB and Connect, we may fail to build the critical mass of both restaurant customers and diners required to substantially increase our revenues.

While our marketing efforts have not historically involved significant expenditures, in the future we may find it necessary to invest more heavily in direct marketing or online or traditional advertising. If we are unable to effectively market our solutions to new customers or are unable to do so in a cost-effective manner, our operating results could be adversely affected.

System interruptions that impair access to our websites or mobile applications would damage our reputation and brand and substantially harm our business and operating results.

The satisfactory performance, reliability and availability of our ERB, Connect, websites, mobile applications and network infrastructure are critical to our reputation, our ability to attract and retain both restaurant customers and diners and our ability to maintain adequate customer service levels. Any systems interruption that results in the unavailability of our websites, mobile applications or any restaurant connected to our websites or mobile applications could result in negative publicity, damage our reputation and brand and cause our business and operating results to suffer. We may experience temporary system interruptions (either to our websites or mobile applications or at our restaurant customer locations) for a variety of reasons, including network failures, power failures, software errors or an overwhelming number of visitors trying to reach our websites and mobile applications during periods of strong demand. In addition, our primary data center is hosted by a third-party. Because we are dependent in part on third parties for the implementation and maintenance of certain aspects of our systems and because some of the causes of system interruptions may be outside of our control, we may not be able to remedy such interruptions in a timely manner, or at all.

We depend on key and highly skilled personnel to operate our business, and if we are unable to retain our current personnel or hire additional personnel our ability to develop and successfully market our business could be harmed.

We believe our future success will depend in large part upon our ability to attract and retain highly skilled managerial, technical, finance, creative and sales and marketing personnel. Moreover, we believe that our future success is highly dependent on the contributions of our named executive officers. All of our U.S. officers and other employees are at-will employees, which means they may terminate their employment relationship with us at any time, and their knowledge of our business and industry would

be extremely difficult to replace. In addition, the loss of any key employees or the inability to attract or retain qualified personnel could delay the development and introduction of, and harm our ability to sell, our solutions and harm the market's perception of us. Competition for qualified personnel is particularly intense in the San Francisco Bay Area, where our headquarters are located. Further, our principal overseas operations are based in London and Tokyo, which are cities that, similar to our headquarters region, have high costs of living and consequently high compensation standards. Qualified individuals are in high demand, and we may incur significant costs to attract them. We may be unable to attract and retain suitably qualified individuals who are capable of meeting our growing sales, operational and managerial requirements, or may be required to pay increased compensation in order to do so. If we are unable to attract and retain the qualified personnel we need to succeed, our business will suffer.

Volatility or lack of performance in our stock price may also affect our ability to attract and retain our key employees. Our named executive officers have become, or will soon become, vested in a substantial amount of stock or stock options. Employees may be more likely to leave us if the shares they own or the shares underlying their options have significantly appreciated in value relative to the original purchase prices of the shares or the exercise prices of the options, or if the exercise prices of the options that they hold are significantly above the market price of our common stock. If we are unable to retain our employees, our business, operating results and financial condition will be harmed.

Failure to adequately protect our intellectual property could substantially harm our business and operating results.

Because our business is heavily dependent on our intellectual property, including our proprietary software, the protection of our intellectual property rights is crucial to the success of our business. We rely on a combination of patent, trademark, trade secret and copyright law and contractual restrictions to protect our intellectual property. These afford only limited protection. Despite our efforts to protect our proprietary rights, unauthorized parties may attempt to copy aspects of our website or mobile application features, software and functionality or obtain and use information that we consider proprietary, such as the technology used to operate our websites and mobile applications, our content and our trademarks. Moreover, policing our proprietary rights is difficult and may not always be effective. In particular, because we sell our solutions internationally, we may need to enforce our rights under the laws of countries that do not protect proprietary rights to as great an extent as do the laws of the United States.

We have registered "OpenTable" and our other trademarks as trademarks in the United States and in certain other countries. We have also registered "toptable" in the United Kingdom. Competitors may adopt service names similar to ours, thereby impeding our ability to build brand identity and possibly leading to customer confusion. In addition, there could be potential trade name or trademark infringement claims brought by owners of other registered trademarks or trademarks that incorporate variations of the term OpenTable or our other trademarks. From time to time, we have acquired Internet domain names held by others when such names were causing consumer confusion or had the potential to cause consumer confusion.

We currently hold the "OpenTable.com" and "toptable.com" Internet domain names and various other related domain names. Domain names generally are regulated by Internet regulatory bodies. If we lose the ability to use a domain name in a particular country, we would be forced to either incur significant additional expenses to market our solutions within that country, including the development of a new brand and the creation of new promotional materials, or elect not to sell solutions in that country. Either result could substantially harm our business and operating results. The regulation of domain names in the United States and in foreign countries is subject to change. Regulatory bodies could establish additional top-level domains, appoint additional domain name registrars or modify the requirements for holding domain names. As a result, we may not be able to acquire or maintain the domain names that utilize the name OpenTable or toptable in all of the countries in which we currently conduct or intend to conduct business.

Litigation or proceedings before the U.S. Patent and Trademark Office or other governmental authorities and administrative bodies in the United States and abroad may be necessary in the future to enforce our intellectual property rights, to protect our patent rights, trade secrets and domain names and to determine the validity and scope of the proprietary rights of others. Our efforts to enforce or protect our proprietary rights may be ineffective and could result in substantial costs and diversion of resources and could substantially harm our operating results.

Assertions by third parties of infringement by us of their intellectual property rights could result in significant costs and substantially harm our business and operating results.

Other parties have asserted, and may in the future assert, that we have infringed their intellectual property rights. Such litigation may involve patent holding companies or other adverse patent owners who have no relevant product revenue, and therefore our own issued and pending patents may provide little or no deterrence. For example, on May 12, 2009, Mount Hamilton Partners, LLC, or Mount Hamilton, filed a patent infringement lawsuit against us in the United States District Court for the Northern District of California, seeking, among other things, a judgment that we have infringed a certain patent held by Mount Hamilton, an injunctive order against the alleged infringing activities and an award for damages. We subsequently entered into a settlement agreement with Mount Hamilton, effective as of June 30, 2011, and the claims between the parties were dismissed with prejudice on July 7, 2011.

Furthermore, we cannot predict whether assertions of third-party intellectual property rights or claims arising from such assertions will substantially harm our business and operating results. The defense of any infringement claims of a third party, whether they are with or without merit or are determined in our favor, may result in costly litigation and diversion of technical and management personnel. Furthermore, an adverse outcome of a dispute may require us to pay damages, potentially including treble damages and attorneys' fees, if we are found to have willfully infringed a party's patent or copyright rights; cease making, licensing or using solutions that are alleged to incorporate the intellectual property of others; expend additional development resources to redesign our solutions; and enter into potentially unfavorable royalty or license agreements in order to obtain the right to use necessary technologies. Royalty or licensing agreements, if required, may be unavailable on terms acceptable to us, or at all. In any event, we may need to license intellectual property which would require us to pay royalties or make one-time payments.

We depend in part on licenses of technologies from third parties in order to deliver our solutions, and, as a result, our business is dependent in part on the availability of such licenses on commercially reasonable terms.

We currently, and will continue to, license certain technologies from third parties. We cannot be certain that these third-party content licenses will be available to us on commercially reasonable terms or that we will be able to successfully integrate the technology into our solutions. These third-party in-licenses may expose us to increased risk, including risks associated with the assimilation of new technology sufficient to offset associated acquisition and maintenance costs. The inability to obtain any of these licenses could result in delays in solution development until equivalent technology can be identified and integrated. Any such delays in services could cause our business, operating results and financial condition to suffer.

We rely on third parties for many systems and services.

We rely on third-party service providers for certain customer care, fulfillment, processing, systems development, technology and other services. If these third parties experience difficulty meeting our requirements or standards, it could damage our reputation or make it difficult for us to operate some aspects of our business. In addition, if such third-party service providers were to cease operations, temporarily or permanently, face financial distress or other business disruption, we could suffer

increased costs and delays in our ability to provide similar services until an equivalent service provider could be found or we could develop replacement technology or operations. In addition, if we are unsuccessful in choosing high quality partners or we ineffectively manage these partners, it could have an adverse impact on our business and financial performance.

Our business could be negatively affected by changes in search engine algorithms and dynamics, or search engine disintermediation.

A portion of traffic to our websites and mobile applications comes from non-paid search results that appear on search engines such as Google and Bing. Search engines frequently update and change the logic that determines the placement and display of results of a user's search, such that the algorithmic placement of links to our websites or mobile applications can be negatively affected. If a major search engine changes its algorithms in a manner that negatively affects the search engine ranking of our websites or mobile applications, our business and financial performance would be adversely affected. In addition, to the extent Google, Bing or other leading search or meta-search engines disintermediate restaurant reservation or restaurant content providers by offering comprehensive restaurant reservation capabilities, or refer those leads to other favored partners, there could be a material adverse impact on our business and financial performance.

Confidentiality agreements with employees and others may not adequately prevent disclosure of trade secrets and other proprietary information.

We have devoted substantial resources to the development of our proprietary technology, including the proprietary software component of our ERB, Connect, and related processes. In order to protect our proprietary technology and processes, we rely in part on confidentiality agreements with our employees, licensees, independent contractors and other advisors. These agreements may not effectively prevent disclosure of confidential information and may not provide an adequate remedy in the event of unauthorized disclosure of confidential information. In addition, others may independently discover trade secrets and proprietary information, and in such cases we could not assert any trade secret rights against such parties. Costly and time-consuming litigation could be necessary to enforce and determine the scope of our proprietary rights, and failure to obtain or maintain trade secret protection could adversely affect our competitive business position.

Our failure or the failure of third-party service providers to protect our confidential information, the confidential information of our customers and our network against security breaches could damage our reputation and brand and substantially harm our business and operating results.

Our security measures or those of our third-party service providers may not detect or prevent security breaches that could harm our business. Our business requires us to use and store customer, employee and business partner personally identifiable information. This may include names, addresses, phone numbers, email addresses, contact preferences, tax identification numbers and payment account information. We require user names and passwords in order to access our information technology network. We also use encryption and authentication technologies to secure the transmission and storage of data. These security measures may be compromised as a result of third-party security breaches, employee error, malfeasance, faulty password management or other irregularity, and result in persons obtaining unauthorized access to our data or accounts. Third parties may attempt to fraudulently induce employees into disclosing user names, passwords or other sensitive information, which may in turn be used to access our information technology network.

In addition, some of our restaurant customers currently require that diners enter their credit card information to hold a reservation. We rely on encryption and authentication technology licensed from third parties to effect secure transmission of confidential information, including credit card numbers. While we devote significant resources to network security, data encryption and other security measures

to protect our systems and data, these security measures cannot provide absolute security. Advances in computer capabilities, new discoveries in the field of cryptography or other developments may result in a compromise or breach of the technology used by us to protect customer transaction data. The costs to us to eliminate or alleviate network security problems, bugs, viruses, worms, malicious software programs and security vulnerabilities could be significant, and our efforts to address these problems may not be successful and could result in unexpected interruptions, delays, cessation of service and may harm our business operations. In addition, a party that is able to circumvent our security measures or those of our third-party service providers could misappropriate our proprietary information or personally identifiable information of our employees, restaurant customers or diners.

Any such compromise of our security could damage our reputation and brand, result in a violation of applicable privacy and other laws, and expose us to a risk of loss or litigation and possible liability which would substantially harm our business and operating results.

We may require additional capital to respond to business opportunities, challenges, acquisitions or unforeseen circumstances. If such capital is not available to us, our business, operating results and financial condition may be harmed.

We may require additional capital to expand our business. However, additional funds may not be available when we need them, on terms that are acceptable to us, or at all. For example, any debt financing secured by us in the future could involve restrictive covenants relating to our capital raising activities and other financial and operational matters, which may make it more difficult for us to obtain additional capital and to pursue business opportunities, including potential acquisitions. If we do not have funds available to enhance our solutions, maintain the competitiveness of our technology or pursue business opportunities, we may not be able to service our existing customers or acquire new customers. In addition, if we do not have funds available to make strategic acquisitions, we may not be able to expand our business. The inability to raise additional capital could have an adverse effect on our business, operating results and financial condition.

If we issue additional shares of common stock to raise capital, it may have a dilutive effect on your investment.

If we raise additional capital through further issuances of equity or convertible debt securities, our existing stockholders could suffer significant dilution in their percentage ownership of our company. Moreover, any new equity securities we issue could have rights, preferences and privileges senior to those of holders of our common stock.

A further tightening of the credit markets may have an adverse effect on our ability to obtain short-term debt financing.

Worldwide economic conditions threaten to cause further tightening of the credit markets, more stringent lending standards and terms and higher volatility in interest rates. Persistence of these conditions could have a material adverse effect on our access to short-term debt and the terms and cost of that debt. As a result, we may not be able to secure additional financing in a timely manner, or at all, to meet our future capital needs, which may have an adverse effect on our business, operating results and financial condition.

Our business is subject to the risks of earthquakes, fires, floods and other natural catastrophic events and to interruption by man-made problems.

Our systems and operations are vulnerable to damage or interruption from earthquakes, fires, floods, power losses, telecommunications failures, terrorist attacks, acts of war, human errors, break-ins and similar events. For example, a significant natural disaster, such as an earthquake, fire or flood,

could have a material adverse impact on our business, operating results and financial condition, and our insurance coverage may be insufficient to compensate us for losses that may occur. Our U.S. corporate offices and the facility we lease to house our computer and telecommunications equipment are located in the San Francisco Bay Area, a region known for seismic activity. In addition, acts of terrorism, which may be targeted at metropolitan areas which have higher population density than rural areas, could cause disruptions in our or our restaurant customers' businesses or the economy as a whole. We may not have sufficient protection or recovery plans in certain circumstances, such as natural disasters affecting the San Francisco Bay Area, and our business interruption insurance may be insufficient to compensate us for losses that may occur. Our servers may also be vulnerable to computer viruses, break-ins and similar disruptions from unauthorized tampering with our computer systems, which could lead to interruptions, delays, loss of critical data or the unauthorized disclosure of confidential customer data. See “—Our failure or the failure of third-party service providers to protect our confidential information, the confidential information of our customers and our network against security breaches could damage our reputation and brand and substantially harm our business and operating results.”

Any condition that causes people to refrain, or prevents people, from dining at restaurants, such as severe weather, outbreaks of pandemic or contagious diseases, or threats of terrorist attacks may adversely affect our business, operating results and financial condition.

Our business and operations could be materially and adversely affected by severe weather or outbreaks of pandemic or contagious diseases or other conditions that cause people to refrain, or prevent people, from dining at restaurants. For example, many of our restaurant customers are located in major metropolitan areas such as New York City and San Francisco. Severe weather conditions or natural disasters in those areas, such as blizzards, earthquakes or hurricanes, may prevent people from dining at restaurants and adversely affect our business.

In addition, outbreaks of pandemic or contagious diseases may cause people to refrain from dining at restaurants. For example, from April 2009, there have been outbreaks of swine flu, caused by the H1N1 virus, in many regions of the world, including the United States and other countries in which we operate, which have affected the businesses of certain of our restaurant customers. While it did not have a material effect on our business, in April 2009, all of the restaurants in Mexico City, including our restaurant customers there, were closed for a period of approximately two weeks due to the H1N1 (swine) flu.

Furthermore, we cannot predict the effects that actual or threatened armed conflicts, terrorist attacks, efforts to combat terrorism or heightened security requirements could have on our operations, the economy or consumer confidence generally. Any of these events could affect consumer spending patterns in general or dining patterns in particular, or affect our restaurant customers due to security measures.

A prolonged recurrence of the above factors or in other business and economic conditions affecting our restaurant customers could result in a significant decline in demand for restaurant dining and materially and adversely affect our financial condition and results of operations by reducing traffic in some or all of the restaurants that use our solutions, reducing the number of reservations made through our websites and mobile applications or the websites and mobile applications of our partners or restaurant customers, causing our restaurant customers to go out of business, or causing our restaurant customers to request lower pricing for our solutions, terminate their subscriptions to our solutions or default on their payment obligations to us.

Changes in our tax rates or exposure to additional tax liabilities could adversely affect our earnings and financial condition.

As a multinational corporation, we are subject to income taxes in the United States and various foreign jurisdictions. Significant judgment is required in determining our global provision for income taxes and other tax liabilities. In the ordinary course of a global business, there are intercompany transactions and calculations where the ultimate tax determination is uncertain. Our income tax returns are routinely subject to audits by tax authorities. Although we regularly assess the likelihood of adverse outcomes resulting from these examinations to determine our tax estimates, a final determination of tax audits or tax disputes could have an adverse effect on our results of operations and financial condition.

We are also subject to non-income taxes, such as payroll, sales, use, value-added, net worth, property and goods and services taxes in the United States and various foreign jurisdictions. We are routinely under audit by tax authorities with respect to these non-income taxes and may have exposure to additional non-income tax liabilities which could have an adverse effect on our results of operations and financial condition.

In addition, our future effective tax rates could be favorably or unfavorably affected by changes in tax rates, changes in the valuation of our deferred tax assets or liabilities, changes in our legal structure or changes in tax laws or their interpretation. Such changes could have a material adverse impact on our financial results.

As a public company, we incur significant increased costs which may adversely affect our operating results and financial condition.

As a public company, we incur significant accounting, legal and other expenses that we did not incur as a private company, including costs associated with our public company reporting requirements. We have also incurred, and anticipate that we will continue to incur, costs associated with corporate governance requirements, including requirements under the Sarbanes-Oxley Act of 2002 and the Dodd-Frank Wall Street Reform and Consumer Protection Act, as well as rules implemented by the SEC and The Nasdaq Stock Market. Furthermore, these laws and regulations could make it more difficult or more costly for us to obtain certain types of insurance, including director and officer liability insurance, and we may be forced to accept reduced policy limits and coverage or incur substantially higher costs to obtain the same or similar coverage. The impact of these requirements could also make it more difficult for us to attract and retain qualified persons to serve on our board of directors, our board committees or as executive officers.

New laws and regulations as well as changes to existing laws and regulations affecting public companies, including the provisions of the Sarbanes-Oxley Act of 2002, the Dodd-Frank Wall Street Reform and Consumer Protection Act and rules adopted by the SEC and by The Nasdaq Stock Market, would likely result in increased costs to us as we respond to their requirements. We are investing resources to comply with evolving laws and regulations, and this investment may result in increased general and administrative expenses and a diversion of management's time and attention from revenue-generating activities to compliance activities.

Risks Related to Our Industry

Seasonality may cause fluctuations in our financial results.

We generally experience some effects of seasonality due to increases in restaurant dining tied to certain holidays and restaurant industry promotions. As a result, we typically experience higher sequential growth in diners seated during the first and fourth quarters, as compared with the second and third quarters. Although historically our revenue has increased in each quarter as we have added restaurant customers and diners, in the future this seasonality may cause fluctuations in our financial

results. In addition, other seasonality trends may develop and the existing seasonality and consumer behavior that we experience may change.

If use of the Internet, particularly with respect to online restaurant reservations, does not continue to increase as rapidly as we anticipate, our business will be harmed.

Our future net profits are substantially dependent upon the continued use of the Internet as an effective medium of business and communication by our target customers. Internet use may not continue to develop at historical rates, and consumers may not continue to use the Internet and other online services as a medium for commerce. In addition, the Internet may not be accepted as a viable long-term marketplace or resource for a number of reasons, including:

- actual or perceived lack of security of information or privacy protection;
- possible disruptions, computer viruses or other damage to Internet servers or to users' computers; and
- excessive governmental regulation.

Our success will depend, in large part, upon third parties maintaining the Internet infrastructure to provide a reliable network backbone with the speed, data capacity, security and hardware necessary for reliable Internet access and services. Our business, which relies on a contextually rich websites and mobile applications that requires the transmission of substantial data, is also significantly dependent upon the availability and adoption of broadband Internet access and other high-speed Internet connectivity technologies.

Government regulation of the Internet is evolving, and unfavorable changes could substantially harm our business and operating results.

We are subject to general business regulations and laws as well as regulations and laws specifically governing the Internet. Existing and future laws and regulations may impede the growth of the Internet or other online services. These regulations and laws may cover taxation, tariffs, user privacy, data protection, pricing, content, copyrights, distribution, electronic contracts and other communications, consumer protection, broadband residential Internet access and the characteristics and quality of services. It is not clear how existing laws governing issues such as property ownership, sales and other taxes, libel and personal privacy apply to the Internet. Unfavorable resolution of these issues may substantially harm our business and operating results.

Risks Related to Owning Our Common Stock

Our stock price may be volatile, and the value of an investment in our common stock may decline.

An active, liquid and orderly market for our common stock may not be sustained, which could depress the trading price of our common stock. The price of our common stock has been, and is likely to continue to be, volatile, which means that it could decline substantially within a short period of time. For example, since shares of our common stock were sold in our initial public offering in May 2009 at a price of \$20.00 per share, our closing stock price has ranged from \$24.66 to \$115.62. The trading price of our common stock may be subject to wide fluctuations in response to various factors, some of which are beyond our control, including:

- our operating performance and the operating performance of similar companies;
- the overall performance of the equity markets;
- the number of shares of our common stock publicly owned and available for trading;
- threatened or actual litigation;

- changes in laws or regulations relating to our solutions;
- any major change in our board of directors or management;
- publication of research reports about us or our industry or positive or negative recommendations or withdrawal of research coverage by securities analysts;
- large volumes of sales of our shares of common stock; and
- general political and economic conditions.

In addition, the stock market in general, and the market for Internet-related companies in particular, has experienced extreme price and volume fluctuations that have often been unrelated or disproportionate to the operating performance of those companies. Securities class action litigation has often been instituted against companies following periods of volatility in the overall market and in the market price of a company's securities. This litigation, if instituted against us, could result in very substantial costs, divert our management's attention and resources and harm our business, operating results and financial condition.

Our directors, executive officers and principal stockholders have substantial control over us and could delay or prevent a change in corporate control.

As of December 31, 2011, our directors and executive officers, together with their affiliates, beneficially owned approximately 5.5% of our outstanding common stock. In addition, as of December 31, 2011, approximately 69.0% of our outstanding common stock was held by other holders of more than 5% of our common stock and their affiliates.

These stockholders, acting together, have the ability to control, or have significant influence over, the outcome of matters submitted to our stockholders for approval, including the election of directors and any merger, consolidation or sale of all or substantially all of our assets. In addition, these stockholders, acting together, have the ability to control, or have significant influence over, the management and affairs of our company. Accordingly, this concentration of ownership might harm the market price of our common stock by:

- delaying, deferring or preventing a change in corporate control;
- impeding a merger, consolidation, takeover or other business combination involving us; or
- discouraging a potential acquirer from making a tender offer or otherwise attempting to obtain control of us.

If securities or industry analysts publish inaccurate or unfavorable research about our business, our stock price and trading volume could decline.

The trading market for our common stock depends in part on the research and reports that securities or industry analysts publish about us or our business. If one or more of the analysts who cover us downgrade our stock or publish inaccurate or unfavorable research about our business, our stock price would likely decline. If one or more of these analysts cease coverage of our company or fail to publish reports on us regularly, demand for our stock could decrease, which might cause our stock price and trading volume to decline.

Certain provisions in our charter documents and Delaware law could discourage takeover attempts and lead to management entrenchment.

Our certificate of incorporation and bylaws contain provisions that could have the effect of delaying or preventing changes in control or changes in our management without the consent of our board of directors. These provisions include:

- a classified board of directors with three-year staggered terms, which may delay the ability of stockholders to change the membership of a majority of our board of directors;
- no cumulative voting in the election of directors, which limits the ability of minority stockholders to elect director candidates;
- the exclusive right of our board of directors to elect a director to fill a vacancy created by the expansion of the board of directors or the resignation, death or removal of a director, which prevents stockholders from being able to fill vacancies on our board of directors;
- the ability of our board of directors to determine to issue shares of preferred stock and to determine the price and other terms of those shares, including preferences and voting rights, without stockholder approval, which could be used to significantly dilute the ownership of a hostile acquirer;
- a prohibition on stockholder action by written consent, which forces stockholder action to be taken at an annual or special meeting of our stockholders;
- the requirement that a special meeting of stockholders may be called only by the chairman of the board of directors, the chief executive officer or the board of directors, which may delay the ability of our stockholders to force consideration of a proposal or to take action, including the removal of directors; and
- advance notice procedures that stockholders must comply with in order to nominate candidates to our board of directors or to propose matters to be acted upon at a stockholders' meeting, which may discourage or deter a potential acquirer from conducting a solicitation of proxies to elect the acquirer's own slate of directors or otherwise attempting to obtain control of us.

We are also subject to certain anti-takeover provisions under Delaware law. Under Delaware law, a corporation may not, in general, engage in a business combination with any holder of 15% or more of its capital stock unless the holder has held the stock for three years or, among other things, the board of directors has approved the transaction.

ITEM 1B. UNRESOLVED STAFF COMMENTS

None.

ITEM 2. PROPERTIES

Our principal executive offices are located in San Francisco, California, in a 34,236 square-foot facility, under a lease expiring on April 30, 2013. We also have regional offices in Boulder, Colorado; Chicago, Illinois; New York, New York; Frankfurt, Germany; London, England; Mexico City, Mexico; and Tokyo, Japan.

ITEM 3. LEGAL PROCEEDINGS

We are subject to various legal proceedings and claims arising in the ordinary course of business. Although occasional adverse decisions or settlements may occur, management believes that the final disposition of such matters will not have a material adverse effect on our business, financial position, results of operations or cash flows.

ITEM 4. MINE SAFETY DISCLOSURES

Not applicable.

PART II

ITEM 5. MARKET FOR REGISTRANT'S COMMON EQUITY, RELATED STOCKHOLDER MATTERS AND ISSUER PURCHASES OF EQUITY SECURITIES

Our common stock has been quoted on the Nasdaq Global Market under the symbol "OPEN" since our initial public offering on May 21, 2009. Prior to this time, there was no public market for our common stock. The following table shows the high and low sale prices per share of our common stock as reported on the Nasdaq Global Market for the periods indicated:

	2011		2010	
	High	Low	High	Low
First Quarter	\$107.47	\$68.42	\$38.29	\$24.70
Second Quarter	\$118.66	\$72.57	\$45.51	\$36.23
Third Quarter	\$ 90.89	\$43.25	\$68.85	\$40.84
Fourth Quarter	\$ 52.95	\$31.54	\$73.72	\$56.91

On February 23, 2012, the closing price as reported on The NASDAQ Global Market of our common stock was \$47.85 per share. As of February 21, 2012, we had approximately 103 holders of record of our common stock.

We have never declared or paid, and do not anticipate declaring or paying, any cash dividends on our common stock. Any future determination as to the declaration and payment of dividends, if any, will be at the discretion of our board of directors and will depend on then existing conditions, including our financial condition, operating results, contractual restrictions, capital requirements, business prospects and other factors our board of directors may deem relevant. Our current line of credit precludes the payment of dividends without the permission of the lender; see Note 7 to our Consolidated Financial Statements.

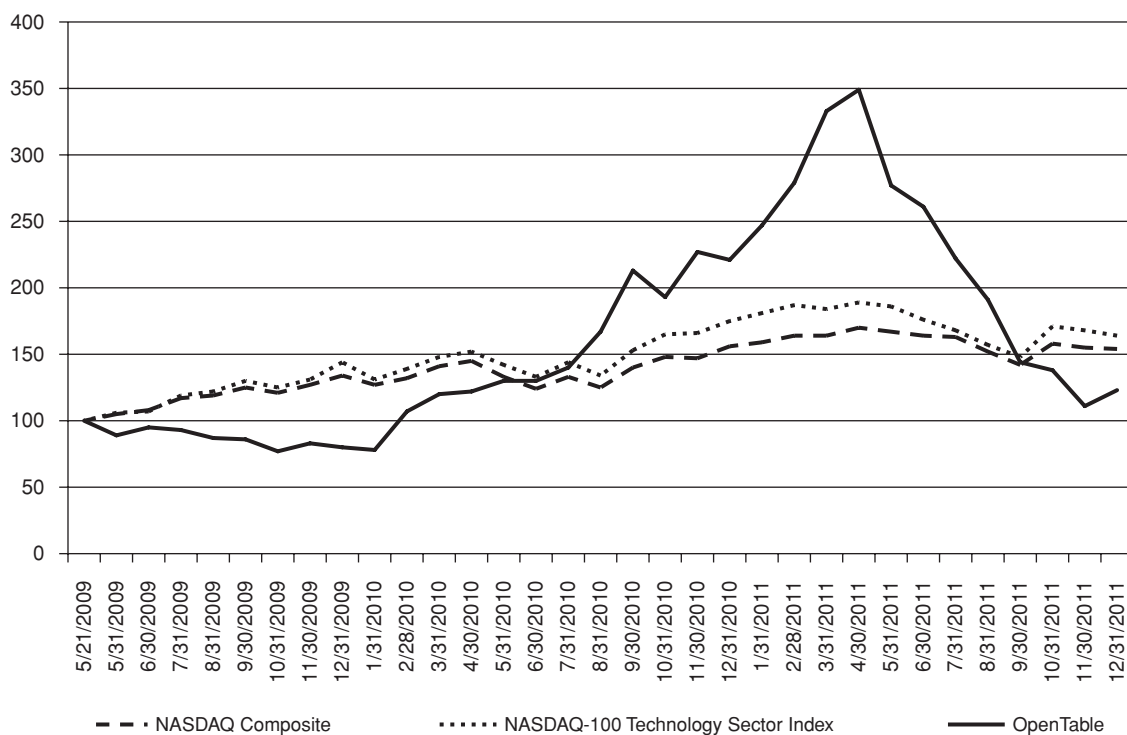
Our equity plan information required by this item is incorporated by reference to the information in Part III, Item 12 of this Form 10-K.

Performance Graph

This performance graph shall not be deemed "soliciting material" or to be "filed" with the SEC for purposes of Section 18 of the Securities Exchange Act of 1934, as amended, or the Exchange Act, or otherwise subject to the liabilities under that Section, and shall not be deemed to be incorporated by reference into any filing of OpenTable, Inc. under the Securities Act of 1933, as amended, or the Exchange Act.

The following graph shows a comparison from May 21, 2009 (the date our common stock commenced trading on The Nasdaq Global Market) through December 31, 2011 of cumulative total return for our common stock, the Nasdaq Composite Index and the Nasdaq-100 Technology Sector Index. Such returns are based on historical results and are not intended to suggest future performance. Data for the Nasdaq Composite Index and the Nasdaq-100 Technology Sector Index assume reinvestment of dividends.

COMPARISON OF THIRTY-TWO MONTH CUMULATIVE TOTAL RETURN*
Among OpenTable, Inc., the NASDAQ Composite Index
And the NASDAQ-100 Technology Sector Index



* \$100 invested in stock on 5/21/09 in index-including reinvestment of dividends

Purchases of Equity Securities

Period	Total Number of Shares Purchased	Average Price Paid per Share	Total Number of Shares Purchased as Part of Publicly Announced Plans or Programs(1)	Maximum Number (or Approximate Dollar Value) of Shares that May Yet Be Purchased Under the Plans or Programs
October 1, 2011 - October 31, 2011	—	\$ 0.00	—	\$50,000,000.00
November 1, 2011 - November 30, 2011 .	—	\$ 0.00	—	\$50,000,000.00
December 1, 2011 - December 31, 2011 .	1,089,300	\$37.9089	1,089,300	\$ 8,705,881.27
Total	1,089,300	\$37.9089	1,089,300	—

(1) On November 30, 2011, we announced that our board of directors had approved a \$50.0 million share repurchase program, or Share Repurchase Program. We completed the Share Repurchase Program on January 6, 2012. As of such date, we had purchased an aggregate of 1,310,973 shares of our Common Stock for an aggregate consideration of \$50.0 million.

Recent Sales of Unregistered Securities

There were no unregistered sales of our equity securities during the twelve months ended December 31, 2011.

Use of Proceeds

On May 21, 2009, our registration statement on Form S-1 (File No. 333-157034) was declared effective for our initial public offering, pursuant to which we registered the offering and sale of 1,572,684 shares of common stock by us and the associated sale of 1,427,316 shares of common stock by selling stockholders and the additional sale pursuant to the underwriters' over-allotment option for an additional 450,000 shares of common stock by us, at a public offering price of \$20.00 per share. On May 27, 2009, we sold 2,022,684 shares of common stock, including 450,000 shares pursuant to the underwriters' over-allotment option, for an aggregate offering price of \$40,453,680, and the selling stockholders sold 1,427,316 shares of common stock for an aggregate offering price of \$28,546,320 and the offering terminated. The managing underwriter was Merrill Lynch & Co.

As a result of the offering, we received net proceeds of approximately \$34.6 million, after deducting underwriting discounts and commissions reasonably estimated at \$2.8 million and additional offering-related expenses reasonably estimated at \$3.0 million, for total expenses reasonably estimated at \$5.8 million. None of such payments were direct or indirect payments to any of our directors or officers or their associates or to persons owning 10 percent or more of our common stock or direct or indirect payments to others.

We used all of our net offering proceeds to repurchase shares of our Common Stock pursuant to the Share Repurchase Program.

ITEM 6. SELECTED CONSOLIDATED FINANCIAL DATA

The following selected consolidated financial data should be read in conjunction with “Management’s Discussion and Analysis of Financial Condition and Results of Operations” and the consolidated financial statements, related notes and other financial information included elsewhere in this document. The consolidated income statements data for the years ended December 31, 2011, 2010 and 2009 and the consolidated balance sheets data as of December 31, 2011 and 2010 are derived from our audited consolidated financial statements included elsewhere in this report. The consolidated income statements data for the years ended December 31, 2008 and 2007 and the consolidated balance sheets data as of December 31, 2009, 2008 and 2007 are derived from our audited consolidated financial statements not included in this report. Historical results are not necessarily indicative of the results to be expected in the future.

	Years Ended December 31,				
	2011	2010(2)	2009	2008	2007
	(In thousands, except per share amounts)				
REVENUES	\$139,518	\$98,991	\$68,596	\$55,844	\$41,148
COSTS AND EXPENSES:					
Operations and support(1)	39,350	27,803	20,736	17,760	12,603
Sales and marketing(1)	28,697	21,673	15,525	14,830	11,326
Technology(1)	14,691	12,345	10,043	9,511	5,863
General and administrative(1)	24,157	19,252	13,608	13,117	12,212
Total costs and expenses	106,895	81,073	59,912	55,218	42,004
Income (loss) from operations	32,623	17,918	8,684	626	(856)
Other income, net	98	241	346	468	951
Income before taxes	32,721	18,159	9,030	1,094	95
Income tax expense (benefit)	11,167	4,080	3,963	2,118	(9,121)
NET INCOME (LOSS)	<u>\$ 21,554</u>	<u>\$14,079</u>	<u>\$ 5,067</u>	<u>\$ (1,024)</u>	<u>\$ 9,216</u>
Net income (loss) per share:					
Basic	<u>\$ 0.92</u>	<u>\$ 0.62</u>	<u>\$ 0.28</u>	<u>\$ (0.10)</u>	<u>\$ 0.36</u>
Diluted	<u>\$ 0.88</u>	<u>\$ 0.58</u>	<u>\$ 0.22</u>	<u>\$ (0.10)</u>	<u>\$ 0.31</u>
Weighted average shares outstanding:					
Basic	23,525	22,602	17,352	10,016	9,522
Diluted	24,436	23,979	22,467	10,016	10,943
(1) Stock-based compensation included in above line items:					
Operations and support	\$ 1,665	\$ 943	\$ 320	\$ 339	\$ 290
Sales and marketing	2,054	1,872	764	878	709
Technology	1,703	1,547	516	694	288
General and administrative	5,307	3,689	1,218	2,059	1,816
	<u>\$ 10,729</u>	<u>\$ 8,051</u>	<u>\$ 2,818</u>	<u>\$ 3,970</u>	<u>\$ 3,103</u>

(2) Includes the results of operations of toptable.com from October 1, 2010. See Note 3 of our Consolidated Financial Statements.

	Years Ended December 31,				
	2011	2010(2)	2009	2008	2007
	(In thousands, except per share amounts)				
Other Operational Data:					
Installed restaurants (at period end):					
North America	17,150	13,795	10,850	9,295	7,391
International	7,969	6,254	1,501	1,040	470
Total	25,119	20,049	12,351	10,335	7,861
Seated diners (in thousands):					
North America	89,533	62,430	41,909	33,636	24,614
International	7,141	2,925	957	542	244
Total	96,674	65,355	42,866	34,178	24,858
Headcount (at period end):					
North America	398	344	256	238	192
International	160	149	63	59	34
Total	558	493	319	297	226
Additional Financial Data:					
Revenues:					
North America	\$118,654	\$90,108	\$64,751	\$53,065	\$39,601
International	20,864	8,883	3,845	2,779	1,547
Total	\$139,518	\$98,991	\$68,596	\$55,844	\$41,148
Income (loss) from operations:					
North America	\$ 44,007	\$26,039	\$14,591	\$ 9,088	\$ 4,974
International	(11,384)	(8,121)	(5,907)	(8,462)	(5,830)
Total	\$ 32,623	\$17,918	\$ 8,684	\$ 626	\$ (856)
Depreciation and amortization:					
North America	\$ 6,852	\$ 6,036	\$ 4,752	\$ 4,026	\$ 2,817
International	5,153	1,532	476	350	184
Total	\$ 12,005	\$ 7,568	\$ 5,228	\$ 4,376	\$ 3,001
Stock-based compensation:					
North America	\$ 7,713	\$ 7,117	\$ 2,610	\$ 3,563	\$ 2,762
International	3,016	934	208	407	341
Total	\$ 10,729	\$ 8,051	\$ 2,818	\$ 3,970	\$ 3,103

	December 31,				
	2011	2010	2009	2008	2007
	(In thousands)				
Consolidated Balance Sheets Data:					
Cash and cash equivalents	\$ 36,519	\$ 33,444	\$ 19,807	\$ 5,528	\$21,661
Short-term investments	13,411	9,080	50,221	17,259	—
Property, equipment and software, net	16,150	14,612	11,516	11,125	8,378
Working capital	48,570	37,679	61,788	14,745	9,759
Total assets	163,815	149,896	100,331	50,883	45,814
Dining rewards payable	20,827	15,398	11,611	8,462	5,836
Preferred stock	—	—	—	21,909	21,909
Total stockholders' equity	110,227	102,145	73,405	26,684	22,485

ITEM 7. MANAGEMENT'S DISCUSSION AND ANALYSIS OF FINANCIAL CONDITION AND RESULTS OF OPERATIONS

You should read the following discussion of our financial condition and results of operations in conjunction with the financial statements and the notes thereto included elsewhere in this report. The following discussion contains forward-looking statements that reflect our plans, estimates and beliefs. Our actual results could differ materially from those discussed in the forward-looking statements. Factors that could cause or contribute to these differences include those discussed below and elsewhere in this report, particularly in "Risk Factors."

Overview

We provide solutions that form an online network connecting reservation-taking restaurants and people who dine at those restaurants. Our solutions for restaurants include our proprietary Electronic Reservation Book, or ERB, and Connect. Our solutions for diners include www.opentable.com and www.toptable.com, our popular restaurant reservation websites, as well as a variety of mobile applications. The OpenTable network includes approximately 25,000 OpenTable restaurant customers spanning all 50 states as well as select markets outside of the United States. Since our inception in 1998, we have seated over 280 million diners through OpenTable reservations, and during the three months ended December 31, 2011, we seated an average of approximately 9.0 million diners per month. Restaurants that use our ERB pay us a one-time installation fee for onsite installation and training, a monthly subscription fee for the use of our software and hardware and a fee for each restaurant guest seated through online reservations. Restaurants that use Connect pay us a fee for each restaurant guest seated through online reservations. Diners can use our online restaurant reservation service for free. For the twelve months ended December 31, 2011 and 2010, our net revenues were \$139.5 million and \$99.0 million, respectively. For the twelve months ended December 31, 2011 and 2010, our reservation revenues accounted for 53% and 48% of our total revenues, respectively, our subscription revenues accounted for 36% and 44% of our total revenues, respectively, and our other revenues accounted for 11% and 8% of our total revenues, respectively.

In 2004, we began to selectively expand outside of North America into countries that are characterized by large numbers of online consumer transactions and reservation-taking restaurants. To date, we have concentrated our international efforts in Germany, Japan and the United Kingdom. Our revenues outside of North America for the twelve months ended December 31, 2011 and 2010 were \$20.9 million and \$8.9 million, respectively, or 15% and 9% of our total revenues, respectively. We intend to continue to incur substantial expenses in advance of recognizing material related revenues as we attempt to further penetrate our existing international markets and selectively enter new markets. Some international markets may fail to meet our expectations, and we may decide to realign our focus, as we did when we closed our offices in Spain and France in the fourth quarter of 2008.

Basis of Presentation

General

We report consolidated operations in U.S. dollars and operate in two geographic segments: North America and International. The North America segment is comprised of all of our operations in the United States, Canada and Mexico, and the International segment is comprised of all non-North America operations, which includes operations in Europe and Asia.

Revenues

We generate substantially all of our revenues from our restaurant customers. Our revenues include monthly subscription fees, a fee for each restaurant guest seated through online reservations and other revenue, including installation fees for our ERB (including training). Subscription revenues are recognized on a straight-line basis during the contractual period over which the service is delivered to our restaurant customers. Revenues from online reservations are recognized on a transaction basis as the diners are seated by the restaurant. Installation fees are recognized on a straight-line basis over an estimated customer life of approximately three to six years. Revenues are shown net of redeemable Dining Points issued to diners as described in “Critical Accounting Policies and Estimates—Dining Rewards Loyalty Program” below.

Costs and Expenses

Operations and support. Our operations and support expenses consist primarily of payroll and related costs, including bonuses and stock-based compensation, for those employees associated with installation, support and maintenance for our restaurant customers, as well as costs related to our outsourced call center. Operations and support expenses also include restaurant equipment costs, such as depreciation of restaurant-related hardware, shipping costs related to restaurant equipment, restaurant equipment costs that do not meet the capitalization threshold, referral payments and website connectivity costs. Operations and support expenses also include amortization of capitalized website and development costs (see “Critical Accounting Policies and Estimates—Website and Software Development Costs” below). Also included in operations and support expenses are travel and related expenses incurred by the employees providing installation and support services for our restaurant customers, plus allocated facilities costs.

Sales and marketing. Our sales and marketing expenses consist primarily of salaries, benefits and incentive compensation for sales and marketing employees, including stock-based compensation. Also included are expenses for trade shows, public relations and other promotional and marketing activities, travel and entertainment expenses and allocated facilities costs.

Technology. Our technology expenses consist primarily of salaries and benefits, including bonuses and stock-based compensation, for employees and contractors engaged in the development and ongoing maintenance of our websites, infrastructure and software, as well as allocated facilities costs.

General and administrative. Our general and administrative costs consist primarily of salaries and benefits, including stock-based compensation, for general and administrative employees and contractors involved in executive, finance, accounting, risk management, human resources and legal roles. In addition, general and administrative costs include consulting, legal, accounting and other professional fees. Bad debt, third-party payment processor, credit card, bank processing fees and allocated facilities costs are also included in general and administrative expenses.

Headcount consists of full-time equivalent employees, including full-time equivalent temporary employees, in all of the sections noted below.

Other Income, Net

Other income, net consists primarily of the interest income earned on our cash accounts. Foreign exchange gains and losses are also included in other income, net.

Income Taxes

We are subject to tax in the United States as well as other tax jurisdictions or countries in which we conduct business. Earnings from our non-U.S. activities are subject to local country income tax and may be subject to current U.S. income tax.

Critical Accounting Policies and Estimates

Our consolidated financial statements are prepared in accordance with U.S. Generally Accepted Accounting Principles (GAAP). The preparation of these consolidated financial statements requires us to make estimates and assumptions that affect the reported amounts of assets, liabilities, revenues, expenses and related disclosures. We evaluate our estimates and assumptions on an ongoing basis. Our estimates are based on historical experience and various other assumptions that we believe to be reasonable under the circumstances. Our actual results could differ from these estimates.

We believe that the assumptions and estimates associated with revenue recognition, the points-based loyalty program, website and software development costs, income taxes and stock-based compensation have the greatest potential impact on our consolidated financial statements. Therefore, we consider these to be our critical accounting policies and estimates. For further information on all of our significant accounting policies, please see Note 2 of the accompanying notes to our consolidated financial statements.

Revenue Recognition

Our revenues include monthly subscription fees, a fee for each restaurant guest seated through online reservations and other revenue, including installation fees for our ERB (including training). We provide our application as a service, and follow the provisions of Accounting Standards Codification (“ASC”) Topic 605—Revenue Recognition. We recognize revenue when all of the following conditions are met: there is persuasive evidence of an arrangement; the service has been provided to the customer; the collection of the fees is reasonably assured; and the amount of fees to be paid by the customer is fixed or determinable. Amounts paid by the customer include the right to use our hardware during the service period. Proportionate revenue related to the right to use our hardware accounts for less than 10% of revenues for the periods presented.

Subscription revenues are recognized on a straight-line basis during the contractual period over which the service is delivered. Reservation revenues (or per seated diner fees) are recognized on a transaction-by-transaction basis as diners are seated by our restaurant customers. Amounts that have been invoiced are recorded in accounts receivable and in deferred revenues or revenues, depending on whether the revenue recognition criteria have been met. Revenues are shown net of redeemable Dining Points issued to diners (as described below).

During the third quarter of 2010, we began selling third-party restaurant coupons through our websites, which we include in other revenue. We earn a commission for acting as an agent in these transactions which is recorded on a net basis and is included in revenue upon completion of the third-party coupon sale. The liability for redemption and potential income for breakage remain with the third-party restaurants; therefore, we do not record redemption or breakage of the coupons. We apply a sales allowance for potential coupon refunds. We began to phase-out this third-party coupon program in the fourth quarter of 2011.

Revenues from the installation of our ERB are recognized on a straight-line basis over the estimated customer life, commencing with customer acceptance. The estimated customer life is approximately three to six years, based on historical restaurant customer termination activity. Estimates made by us may differ from actual customer lives. These differences may materially affect other revenue by increasing or decreasing revenue, depending on whether the estimated customer life

decreases or increases. A change in the estimated customer life by one year in either direction would have a minimal impact to total revenue of less than 1%. To date, the impact of changes in the estimated customer life has not been material to the our results of operations or financial position.

Revenue is recognized net of any taxes collected from customers and subsequently remitted to governmental authorities.

Dining Rewards Loyalty Program

We provide a points-based loyalty program, OpenTable Dining Rewards, to registered diners who book and honor reservations through the OpenTable websites and mobile applications. OpenTable Dining Rewards involves the issuance of “Dining Points,” which can be accumulated and redeemed for “Dining Checks.” The standard award is 100 points per reservation, but diners can earn 1,000 points for reservations during featured times under the OpenTable Dining Rewards program. When a diner accumulates a minimum of 2,000 points, he or she may redeem them for a \$20 Dining Check. Every 100 Dining Points is equal to one dollar. Diners may present Dining Checks at any OpenTable restaurant and their bill is reduced by the check amount. The restaurant then deposits the Dining Check to its bank.

If a diner does not make a seated reservation within any 12-month period, then his or her account is considered inactive and the Dining Points balance is reset to zero. As is typical with points-based incentive programs, many Dining Points expire unused. In addition, some Dining Checks are never used. The recorded contra-revenue is an estimate of the eventual cash outlay related to the issued Dining Points and is booked at the time the points are earned by the diner (i.e., when the diner is “seated” by the restaurant). We estimate the liability for the issued Dining Points by analyzing historical patterns of redemption and check-cashing activity. These historical patterns are evaluated in light of any current or proposed program changes that may impact future point redemption. Actual redemption rates could differ from our estimates used in assessing the contra-revenue amounts and corresponding liability, particularly if participation in our premium listings programs, with higher point awards, increases. These differences could materially affect reservation revenues. For example, an increase of 10% in the redemption rate as of December 31, 2011 would result in a reduction in revenues of \$4.0 million and an increase in the dining rewards payable liability of 19%.

We recognize the corresponding liability associated with Dining Points as contra-revenue in accordance with ASC Topic 605-50—Revenue Recognition-Customer Payments and Incentives.

Website and Software Development Costs

Costs related to website and internal-use software are accounted for in accordance with ASC Topic 350-50—Intangibles-Goodwill and Other (“Topic 350-50”). Such software is primarily related to our websites and mobile applications, including support systems. We capitalize our costs to develop software when preliminary development efforts are successfully completed, management has authorized and committed project funding, and it is probable that the project will be completed and the software will be used as intended. Costs incurred prior to meeting these criteria are expensed as incurred. Capitalized costs are amortized when the project is completed and placed in service on a straight-line basis over the estimated useful life of the related asset, generally estimated between two to three years. Costs incurred for enhancements that are expected to result in additional features or functionality are capitalized and amortized over the estimated useful life of the enhancements.

We follow the guidance in ASC Topic 985—Software in accounting for costs incurred in connection with development of the software contained in the ERB used by all restaurant customers, and in a limited number of certain transactions we sell reservation systems that do not include our ongoing service. All costs incurred to establish the technological feasibility of a computer product to be sold, leased or otherwise marketed are expensed as incurred. Costs incurred subsequent to establishing

technological feasibility and through general product release are capitalized and amortized over the estimated product life. The period between technological feasibility and general product release is generally short, and the costs incurred during this stage are not considered to be material and are expensed as incurred.

Income Taxes

We record income taxes using the asset and liability method of accounting for income taxes in accordance with ASC Topic 740—Income Taxes (“Topic 740”). Under this method, income tax expense or benefit is recognized for the amount of taxes payable or refundable for the current year and for deferred tax liabilities and assets for the future tax consequences of events that have been recognized in our consolidated financial statements or tax returns. We account for any income tax contingencies in accordance with Topic 740. The measurement of current and deferred tax assets and liabilities is based on provisions of currently enacted tax laws. The effects of any future changes in tax laws or rates have not been considered.

For the preparation of our consolidated financial statements included herein, we estimate our income taxes and tax contingencies in each of the tax jurisdictions in which we operate prior to the completion and filing of our tax returns. This process involves estimating actual current tax expense together with assessing temporary differences resulting from differing treatment of items, such as deferred revenue, for tax and accounting purposes. These differences result in net deferred tax assets and liabilities. We must then assess the likelihood that the deferred tax assets will be realizable, and to the extent we believe that realizability is not likely, we must establish a valuation allowance. In assessing the need for any additional valuation allowance, we consider all the evidence available to us, both positive and negative, including historical levels of income, legislative developments, expectations and risks associated with estimates of future taxable income, and ongoing prudent and feasible tax planning strategies.

As a result of this analysis, for the year ended December 31, 2011 and consistent with prior years, it was determined that certain foreign tax credit carryforwards and foreign branch net operating losses did not meet the “more likely than not” realizability threshold which increased our valuation allowance by \$0.4 million.

Stock-based Compensation

We measure stock-based awards at fair value and recognize compensation expense for all share-based payment awards made to our employees and directors, including employee stock options and restricted stock units in accordance with ASC Topic 718—Stock Compensation.

We estimate the fair value of stock options granted using the Black-Scholes valuation model. This model requires us to make estimates and assumptions including, among other things, estimates regarding the length of time an employee will retain vested stock options before exercising them, the estimated volatility of our common stock price and the number of options that will be forfeited prior to vesting. The fair value is then amortized using a graded vesting attribution method over the requisite service periods of the awards, which is generally the vesting period. Changes in these estimates and assumptions can materially affect the determination of the fair value of stock-based compensation and consequently, the related amount recognized in our consolidated income statements.

The cost of restricted stock units is determined using the fair value of our common stock on the date of grant. Stock-based compensation expense is recognized using a graded vesting attribution method over the vesting period.

Results of Operations

The following tables set forth our results of operations for the periods presented and as a percentage of our revenues for those periods. The period-to-period comparison of financial results is not necessarily indicative of future results.

	Years Ended December 31,		
	2011	2010	2009
	(In thousands, except per share amounts)		
REVENUES	\$139,518	\$98,991	\$68,596
COSTS AND EXPENSES:			
Operations and support(1)	39,350	27,803	20,736
Sales and marketing(1)	28,697	21,673	15,525
Technology(1)	14,691	12,345	10,043
General and administrative(1)	24,157	19,252	13,608
Total costs and expenses	<u>106,895</u>	<u>81,073</u>	<u>59,912</u>
Income from operations	32,623	17,918	8,684
Other income, net	98	241	346
Income before taxes	32,721	18,159	9,030
Income tax expense	11,167	4,080	3,963
NET INCOME (LOSS)	<u>\$ 21,554</u>	<u>\$14,079</u>	<u>\$ 5,067</u>
Net income (loss) per share:			
Basic	<u>\$ 0.92</u>	<u>\$ 0.62</u>	<u>\$ 0.28</u>
Diluted	<u>\$ 0.88</u>	<u>\$ 0.58</u>	<u>\$ 0.22</u>
Weighted average shares outstanding:			
Basic	23,525	22,602	17,352
Diluted	24,436	23,979	22,467
(1) Stock-based compensation included in above line items:			
Operations and support	\$ 1,665	\$ 943	\$ 320
Sales and marketing	2,054	1,872	764
Technology	1,703	1,547	516
General and administrative	5,307	3,689	1,218
	<u>\$ 10,729</u>	<u>\$ 8,051</u>	<u>\$ 2,818</u>

	Years Ended December 31,		
	2011	2010	2009
	(In thousands, except per share amounts)		
Other Operational Data:			
Installed restaurants (at period end):			
North America	17,150	13,795	10,850
International	<u>7,969</u>	<u>6,254</u>	<u>1,501</u>
Total	25,119	20,049	12,351
Seated diners (in thousands):			
North America	89,533	62,430	41,909
International	<u>7,141</u>	<u>2,925</u>	<u>957</u>
Total	96,674	65,355	42,866
Headcount (at period end):			
North America	398	344	256
International	<u>160</u>	<u>149</u>	<u>63</u>
Total	558	493	319
Additional Financial Data:			
Revenues:			
North America	\$118,654	\$90,108	\$64,751
International	<u>20,864</u>	<u>8,883</u>	<u>3,845</u>
Total	\$139,518	\$98,991	\$68,596
Income (loss) from operations:			
North America	\$ 44,007	\$26,039	\$14,591
International	<u>(11,384)</u>	<u>(8,121)</u>	<u>(5,907)</u>
Total	\$ 32,623	\$17,918	\$ 8,684
Depreciation and amortization:			
North America	\$ 6,852	\$ 6,036	\$ 4,752
International	<u>5,153</u>	<u>1,532</u>	<u>476</u>
Total	\$ 12,005	\$ 7,568	\$ 5,228
Stock-based compensation:			
North America	\$ 7,713	\$ 7,117	\$ 2,610
International	<u>3,016</u>	<u>934</u>	<u>208</u>
Total	\$ 10,729	\$ 8,051	\$ 2,818

	Years Ended December 31,		
	2011	2010	2009
REVENUES	100%	100%	100%
COSTS AND EXPENSES:			
Operations and support	28%	28%	30%
Sales and marketing	21%	22%	23%
Technology	11%	13%	15%
General and administrative	17%	19%	20%
Total costs and expenses	<u>77%</u>	<u>82%</u>	<u>88%</u>
Income from operations	23%	18%	12%
Other income, net	0%	0%	1%
Income before taxes	<u>23%</u>	<u>18%</u>	<u>13%</u>
Income tax expense	8%	4%	6%
NET INCOME (LOSS)	<u>15%</u>	<u>14%</u>	<u>7%</u>

Years ended December 31, 2011, 2010 and 2009

Revenues

	Years Ended December 31,			2010 to 2011% Change	2009 to 2010% Change
	2011	2010	2009		
(Dollars in thousands)					
Installed restaurants (at period end):					
North America	17,150	13,795	10,850	24%	27%
International	7,969	6,254	1,501	27%	317%
Total	25,119	20,049	12,351	25%	62%
Seated diners (in thousands):					
North America	89,533	62,430	41,909	43%	49%
International	7,141	2,925	957	144%	206%
Total	96,674	65,355	42,866	48%	52%
Revenues by type:					
Reservation	\$ 74,215	\$47,520	\$29,437	56%	61%
Subscription	50,767	43,125	35,854	18%	20%
Other	14,536	8,346	3,305	74%	153%
Total	<u>\$139,518</u>	<u>\$98,991</u>	<u>\$68,596</u>	41%	44%
Percentage of revenues by type:					
Reservation	53%	48%	43%		
Subscription	36%	44%	52%		
Other	11%	8%	5%		
Total	<u>100%</u>	<u>100%</u>	<u>100%</u>		
Revenues by location:					
North America	\$118,654	\$90,108	\$64,751	32%	39%
International	20,864	8,883	3,845	135%	131%
Total	<u>\$139,518</u>	<u>\$98,991</u>	<u>\$68,596</u>	41%	44%
Percentage of revenues by location:					
North America	85%	91%	94%		
International	15%	9%	6%		
Total	<u>100%</u>	<u>100%</u>	<u>100%</u>		

2011 compared to 2010. Total revenues increased \$40.5 million, or 41%, from the year ended December 31, 2010 to the year ended December 31, 2011. Reservation revenues increased to \$74.2 million in the year ended December 31, 2011 from \$47.5 million in the year ended December 31, 2010, an increase of \$26.7 million, or 56%. Reservation revenues increased as a result of an increase in seated diners. Subscription revenues increased to \$50.8 million in the year ended December 31, 2011 from \$43.1 million in the year ended December 31, 2010, an increase of \$7.7 million, or 18%. Subscription revenues increased due to the increase in installed ERB restaurants. Other revenues increased to \$14.5 million in the year ended December 31, 2011 from \$8.3 million in the year ended December 31, 2010, an increase of \$6.2 million, or 74%. Other revenues increased primarily as a result of an increase in revenue from other product offerings, including advertising sales, featured private dining listings and third-party restaurant coupon sales. International revenues increased by \$12.0 million, or 135%, from the year ended December 31, 2010 to the year ended December 31, 2011

primarily due to the inclusion for a full year of the operations of toptable.com (“toptable”) in the U.K., which was acquired on October 1, 2010.

2010 compared to 2009. Total revenues increased \$30.4 million, or 44%, from the year ended December 31, 2009 to the year ended December 31, 2010. Reservation revenues increased as a result of an increase in seated diners, plus the addition of \$2.3 million of reservation revenues resulting from the acquisition of toptable in the fourth quarter of 2010. Subscription revenues increased to \$43.1 million in the year ended December 31, 2010 from \$35.9 million in the year ended December 31, 2009, an increase of \$7.2 million, or 20%. Subscription revenues increased due to the increase in installed ERB restaurants. Reservation revenues increased to \$47.5 million in the year ended December 31, 2010 from \$29.4 million in the year ended December 31, 2009, an increase of \$18.1 million, or 61%. Other revenues increased to \$8.3 million in the year ended December 31, 2010 from \$3.3 million in the year ended December 31, 2009, an increase of \$5.0 million, or 153%. Other revenues increased primarily as a result of an increase in revenue from other product offerings, including advertising sales, web service licensing, featured private dining listings and third-party restaurant coupon sales, plus the addition of \$0.7 million of other revenues resulting from the acquisition of toptable in the fourth quarter of 2010.

Costs and Expenses

Operations and Support

	Years Ended December 31,			2010 to 2011% Change	2009 to 2010% Change
	2011	2010	2009		
	(Dollars in thousands)				
Operations and support	\$39,350	\$27,803	\$20,736	42%	34%
Headcount (at period end):					
North America	138	112	76	23%	47%
International	54	54	25	0%	116%
Total	192	166	101	16%	64%

2011 compared to 2010. Operations and support expenses for the year ended December 31, 2011 were \$39.4 million compared to \$27.8 million for the year ended December 31, 2010, an increase of \$11.6 million, or 42%. The increase in operations and support expenses was primarily attributable to a \$4.8 million increase in headcount-related expenses, including stock-based compensation expense, and a \$1.0 million increase in cost at our outsourced customer support center. Also contributing to the increase was a \$2.7 million increase in amortization of intangible assets, a \$1.1 million increase in depreciation of capitalized website and software development costs, plus an increase in restaurant equipment costs, including depreciation on restaurant hardware, and equipment and shipping costs in connection with the increase in the installed base.

2010 compared to 2009. Operations and support expenses for the year ended December 31, 2010 were \$27.8 million compared to \$20.7 million for the year ended December 31, 2009, an increase of \$7.1 million, or 34%. The increase in operations and support expenses was primarily attributable to a \$3.4 million increase in headcount-related expenses, including stock-based compensation expense and a \$0.5 million increase in cost at our outsourced customer support center. Also contributing to the increase was a \$1.1 million increase in amortization of intangible assets, a \$0.7 million increase in depreciation of capitalized website and software development costs, plus an increase in restaurant equipment costs, including depreciation on restaurant hardware, and equipment and shipping costs in connection with the increase in the installed base.

Sales and Marketing

	Years Ended December 31,			2010 to 2011% Change	2009 to 2010% Change
	2011	2010	2009		
	(Dollars in thousands)				
Sales and marketing	\$28,697	\$21,673	\$15,525	32%	40%
Headcount (at period end):					
North America	112	98	62	14%	58%
International	68	62	30	10%	107%
Total	180	160	92	13%	74%

2011 compared to 2010. Sales and marketing expenses for the year ended December 31, 2011 were \$28.7 million compared to \$21.7 million for the year ended December 31, 2010, an increase of \$7.0 million, or 32%. The increase in sales and marketing expenses was primarily attributable to a \$4.8 million increase in headcount-related costs, including stock-based compensation expense, plus an increase of \$1.2 million for pay per click marketing expenses incurred by toptable.

2010 compared to 2009. Sales and marketing expenses for the year ended December 31, 2010 were \$21.7 million compared to \$15.5 million for the year ended December 31, 2009, an increase of \$6.2 million, or 40%. The increase in sales and marketing expenses was primarily attributable to a \$4.6 million increase in headcount-related costs, including stock-based compensation expense, plus the addition of \$0.5 million of pay per click marketing expenses incurred by toptable during the fourth quarter of 2010.

Technology

	Years Ended December 31,			2010 to 2011% Change	2009 to 2010% Change
	2010	2010	2009		
	(Dollars in thousands)				
Technology	\$14,691	\$12,345	\$10,043	19%	23%
Headcount (at period end):					
North America	87	85	73	2%	16%
International	16	11	0	45%	
Total	103	96	73	7%	32%

2011 compared to 2010. Technology expenses for the year ended December 31, 2011 were \$14.7 million compared to \$12.3 million for the year ended December 31, 2010, an increase of \$2.4 million, or 19%. The increase in technology expenses was primarily attributable to a \$1.9 million increase in headcount-related costs, including stock-based compensation expense.

2010 compared to 2009. Technology expenses for the year ended December 31, 2010 were \$12.3 million compared to \$10.0 million for the year ended December 31, 2009, an increase of \$2.3 million, or 23%. The increase in technology expenses was primarily attributable to a \$2.3 million increase in headcount-related costs, including stock-based compensation expense.

General and Administrative

	Years Ended December 31,			2010 to 2011% Change	2009 to 2010% Change
	2011	2010	2009		
(Dollars in thousands)					
General and administrative	\$24,157	\$19,252	\$13,608	25%	41%
Headcount (at period end):					
North America	61	49	45	24%	9%
International	22	22	8	0%	175%
Total	83	71	53	17%	34%

2011 compared to 2010. General and administrative expenses for the year ended December 31, 2011 were \$24.2 million compared to \$19.3 million for the year ended December 31, 2010, an increase of \$4.9 million, or 25%. The increase in general and administrative expenses was primarily attributable to a \$2.7 million increase in headcount-related costs, including stock-based compensation expense. Also contributing to the increase was an increase of \$0.6 million in professional services, primarily related to a one-time legal settlement expense in the second quarter of 2011.

2010 compared to 2009. General and administrative expenses for the year ended December 31, 2010 were \$19.3 million compared to \$13.6 million for the year ended December 31, 2009, an increase of \$5.7 million, or 41%. The increase in general and administrative expenses was primarily attributable to a \$3.6 million increase in headcount-related costs, including stock-based compensation expense. Also contributing to the increase was an increase of \$1.2 million in professional services, primarily reflecting acquisition related expenses incurred during the year ended December 31, 2010.

Other Income, Net

	Years Ended December 31,			2010 to 2011% Change	2009 to 2010% Change
	2011	2010	2009		
(Dollars in thousands)					
Other income, net	\$98	\$241	\$346	(59)%	(30)%

2011 compared to 2010. Other income, net for the year ended December 31, 2011 was \$0.1 million compared to \$0.2 million for the year ended December 31, 2010, a decrease of \$0.1 million, or 59%. The decrease in other income, net was primarily the result of a \$0.1 million decrease in interest income earned on cash, cash equivalents and short-term investments as a result of experiencing lower short-term borrowing interest rates.

2010 compared to 2009. Other income, net for the year ended December 31, 2010 was \$0.2 million compared to \$0.3 million for the year ended December 31, 2009, a decrease of \$0.1 million, or 30%. The decrease in other income, net was primarily the result of a \$0.1 million decrease in interest income earned on cash, cash equivalents and short-term investments as a result of experiencing lower short-term borrowing interest rates.

Income Taxes

	Years Ended December 31,			2010 to 2011% Change	2009 to 2010% Change
	2011	2010	2009		
	(Dollars in thousands)				
Income tax expense	\$11,167	\$4,080	\$3,963	174%	3%

2011 compared to 2010. Income tax expense for the year ended December 31, 2011 was \$11.2 million compared to income tax expense of \$4.1 million for the year ended December 31, 2010. Our effective income tax rate in 2011 was 34.1% up from 22.5% in 2010. Our effective tax rate increased in 2011 as compared to 2010 due to the recognition of certain prior years Federal and California research and development tax credit benefits in the year ended December 31, 2010.

2010 compared to 2009. Income tax expense for the year ended December 31, 2010 was \$4.1 million compared to income tax expense of \$4.0 million for the year ended December 31, 2009. Our effective income tax rate in 2010 was 22.5% down from 43.9% in 2009 due to the benefits resulting from research and development tax credits, California Enterprise Zone tax credits and the federal Domestic Manufacturing Deduction which were partially offset by the tax impact of certain stock-based compensation charges and state income tax expense.

Liquidity and Capital Resources

	Years Ended December 31,		
	2011	2010	2009
	(In thousands)		
Consolidated Statements of Cash Flows Data:			
Purchases of property and equipment	\$ 9,584	\$ 9,327	\$ 5,996
Depreciation and amortization			
North America	6,852	6,036	4,752
International	5,153	1,532	476
Total depreciation and amortization	12,005	7,568	5,228
Cash flows from operating activities	42,071	33,356	17,689
Cash flows from investing activities	(13,931)	(24,938)	(42,128)
Cash flows from financing activities	(24,781)	5,352	38,499

As of December 31, 2011, we had cash and cash equivalents of \$36.5 million and short-term investments of \$13.4 million. Cash and cash equivalents consist of cash, money market accounts, certificates of deposit and U.S. government agency securities. Short-term investments consist of U.S. government agency securities and certificates of deposit.

Amounts deposited with third-party financial institutions exceed the Federal Deposit Insurance Corporation, or FDIC, and Securities Investor Protection Corporation, or SIPC, insurance limits, as applicable. These cash, cash equivalents and short-term investment balances could be affected if the underlying financial institutions fail or are subjected to other adverse conditions in the financial markets. To date we have experienced no loss or lack of access to our cash, cash equivalents or short-term investments; however, we can provide no assurances that access to our invested cash, cash equivalents and short-term investments will not be impacted by adverse conditions in the financial markets.

We have a \$5.0 million line of credit to fund working capital under which we have no amounts drawn down as of December 31, 2011. This line of credit expires in July 2012.

Prior to 2005, we financed our operations and capital expenditures through operations, private sales of preferred stock, lease financing and the use of a bank-provided line of credit and operations. Since 2005, we have been able to finance our operations, including international expansion, through cash from operating activities and proceeds from sales of our common stock, including the exercise of vested and unvested employee stock options. We had cash and cash equivalents of \$36.5 million at December 31, 2011 and we believe we will have sufficient cash to support our operating activities and capital expenditures for at least the next twelve months.

Operating Activities

For the twelve months ended December 31, 2011, operating activities provided \$42.1 million in cash, as a result of net income of \$21.6 million, \$10.7 million in stock-based compensation, \$12.0 million in depreciation and amortization and \$2.1 million in provision for bad debts. These amounts were partially offset by a cash usage of \$7.7 million as a result of an increased accounts receivable balance.

For the twelve months ended December 31, 2010, operating activities provided \$33.4 million in cash, as a result of net income of \$14.1 million, \$8.1 million in stock-based compensation, \$7.6 million in depreciation and amortization and \$1.5 million in provision for bad debts. These amounts were partially offset by a cash usage of \$4.9 million as a result of an increased accounts receivable balance.

For the twelve months ended December 31, 2009, operating activities provided \$17.7 million in cash, as a result of net income of \$5.1 million, \$5.2 million in depreciation and amortization, \$1.8 million in provision for bad debts and \$2.8 million in stock-based compensation. These amounts were partially offset by a cash usage of \$3.1 million as a result of an increased accounts receivable balance.

Investing Activities

Our primary investing activities have consisted of purchases and sales of short-term investments, purchases of property, equipment and software and the investment in business acquisitions. We expect to have ongoing capital expenditure requirements to support our growing restaurant installed base and other infrastructure needs. We expect to fund this investment with our existing cash, cash equivalents and short-term investments.

During the twelve months ended December 31, 2011, we purchased \$9.6 million of property, equipment and software, net. Also in the twelve months ended December 31, 2011, we purchased \$4.5 million (net of sales) of short-term investments.

During the twelve months ended December 31, 2010, we acquired toptable for approximately \$55.3 million in cash and also paid \$1.5 million in cash to acquire substantially all of the assets and certain liabilities of Table Maestro. In addition to these business acquisitions, we purchased \$9.3 million of property, equipment and software, net. Also in the twelve months ended December 31, 2010, we sold \$40.6 million (net of purchases) of short-term investments.

During the twelve months ended December 31, 2009, in addition to purchases of property, equipment and software, we purchased \$33.1 million (net of sales) of short-term investments. Also in the twelve months ended December 31, 2009, we purchased substantially all of the assets of GuestBridges, Inc. for approximately \$3.0 million in cash.

Financing Activities

In addition to our initial public offering in May 2009, our financing activities have primarily consisted of proceeds from the issuance of common stock pursuant to our equity incentive plans and the excess tax benefit related to stock compensation.

During the twelve months ended December 31, 2011, we repurchased \$41.3 million of common shares under our share repurchase program which concluded in January 2012.

Off Balance Sheet Arrangements

As of December 31, 2011, we did not have any off balance sheet arrangements.

Contractual Obligations

We lease our primary office space in San Francisco, California and other locations under various non-cancelable operating leases that expire in or prior to 2016. We have no debt obligations, other than a \$5.0 million line of credit for working capital, under which we have not borrowed to date. This credit facility expires in July 2012. Additionally, all property, equipment and software have been purchased for cash, and accordingly we have no capital lease obligations. Finally, we have no material long-term purchase obligations outstanding with any vendors or third parties, or any other long-term liabilities. The following table sets forth, as of December 31, 2011, payments due under our operating lease obligations.

	Payments Under Operating Leases
	(In thousands)
Year ending December 31:	
2012	\$1,859
2013	726
2014	266
2015	118
2016	<u>35</u>
Total	<u>\$3,004</u>

As of December 31, 2011, in addition to the obligations in the table above, we had approximately \$6.2 million of income tax liabilities, including interest and penalties, related to uncertain tax positions. Due to the high degree of uncertainty regarding the settlement of these liabilities, we are unable to estimate the years in which future cash outflows may occur.

Recent Accounting Pronouncements

In May 2011, the Financial Accounting Standards Board (“FASB”) issued ASC Topic 820—Amendments to Achieve Common Fair Value Measurement and Disclosure Requirements in U.S. GAAP and IFRSs (Topic 820). Topic 820 changes the wording used to describe many of the requirements in U.S. GAAP for measuring fair value and for disclosing information about fair value measurements to ensure consistency between U.S. GAAP and IFRS. Topic 820 also expands the disclosures for fair value measurements that are estimated using significant unobservable (Level 3) inputs. Topic 820 is effective for interim and annual periods beginning after December 15, 2011 and is applied prospectively. We anticipate that the adoption of this standard will not materially expand our consolidated financial statement footnote disclosures.

In June 2011, the FASB issued ASC Topic 220—Presentation of Comprehensive Income (Topic 220). Topic 220 eliminates the option to report other comprehensive income and its components in the statement of changes in equity. Topic 220 requires that all nonowner changes in stockholders’ equity be presented in either a single continuous statement of comprehensive income or in two separate but consecutive statements. The amended guidance, which must be applied retroactively, is effective for fiscal years, and interim periods within those years, beginning after December 15, 2011, with earlier adoption permitted. The adoption of this standard will change the presentation of our

consolidated financial statements but will have no effect on the reported amounts of comprehensive net income.

In September 2011, the FASB issued Accounting Standards Update No. 2011-08, Intangibles—Goodwill and Other (Topic 350)—Testing Goodwill for Impairment. Topic 350 is intended to simplify goodwill impairment testing by adding a qualitative review step to assess whether the required quantitative impairment analysis that exists today is necessary. Topic 350 permits an entity to first perform a qualitative assessment to determine whether it is more likely than not that the fair value of a reporting unit is less than its carrying value. If it is concluded that this is the case, it is necessary to perform the currently prescribed two-step goodwill impairment test. Otherwise, the two-step goodwill impairment test is not required. Topic 350 is effective for interim and annual periods beginning after December 15, 2011 and earlier adoption is permitted. We are currently evaluating the impact of adopting this standard on our consolidated financial statements.

ITEM 7A. QUANTITATIVE AND QUALITATIVE DISCLOSURE ABOUT MARKET RISK

We are exposed to market risks in the ordinary course of our business. These risks include primarily interest rate, foreign exchange risks and inflation.

Interest Rate Fluctuation Risk

We do not have any long-term borrowings.

Our investments include cash, cash equivalents and short-term investments. Cash and cash equivalents consist of cash, money market accounts, certificates of deposit and U.S. government agency securities. Short-term investments consist of U.S. government agency securities and certificates of deposit. The primary objective of our investment activities is to preserve principal while maximizing income without significantly increasing risk. We do not enter into investments for trading or speculative purposes. Our investments are exposed to market risk due to a fluctuation in interest rates, which may affect our interest income and the fair market value of our investments. Due to the short-term nature of our investment portfolio, we do not believe an immediate 10% increase in interest rates would have a material effect on the fair market value of our portfolio, and therefore we do not expect our operating results or cash flows to be materially affected to any degree by a sudden change in market interest rates.

Foreign Currency Exchange Risk

We have foreign currency risks related to our revenues and operating expenses denominated in currencies other than the U.S. dollar, principally the British pound sterling, the euro, the Japanese yen, the Canadian dollar and the Mexican peso. We do not believe movements in the foreign currencies in which we transact will significantly affect future net earnings. Foreign currency risk can be quantified by estimating the change in cash flows resulting from a hypothetical 10% adverse change in foreign exchange rates. We believe such a change would not have a material impact on our results of operations.

Inflation Risk

We do not believe that inflation has had a material effect on our business, financial condition or results of operations. If our costs were to become subject to significant inflationary pressures, we may not be able to fully offset such higher costs through price increases. Our inability or failure to do so could harm our business, financial condition and results of operations.

ITEM 8. CONSOLIDATED FINANCIAL STATEMENTS AND SUPPLEMENTARY DATA
OPENTABLE, INC.

INDEX TO CONSOLIDATED FINANCIAL STATEMENTS

	<u>Page</u>
Report of Independent Registered Public Accounting Firm	52
Consolidated Balance Sheets	53
Consolidated Income Statements	54
Consolidated Statements of Stockholders' Equity and Comprehensive Income	55
Consolidated Statements of Cash Flows	56
Notes to Consolidated Financial Statements	57

REPORT OF INDEPENDENT REGISTERED PUBLIC ACCOUNTING FIRM

To the Board of Directors and Stockholders of
OpenTable, Inc.
San Francisco, California

We have audited the accompanying consolidated balance sheets of OpenTable, Inc. and subsidiaries (collectively the “Company”) as of December 31, 2011 and 2010, and the related consolidated income statements, statements of stockholders’ equity and comprehensive income, and of cash flows for each of the three years in the period ended December 31, 2011. These financial statements are the responsibility of the Company’s management. Our responsibility is to express an opinion on these financial statements based on our audits.

We conducted our audits in accordance with the standards of the Public Company Accounting Oversight Board (United States). Those standards require that we plan and perform the audit to obtain reasonable assurance about whether the financial statements are free of material misstatement. An audit includes examining, on a test basis, evidence supporting the amounts and disclosures in the financial statements. An audit also includes assessing the accounting principles used and significant estimates made by management, as well as evaluating the overall financial statement presentation. We believe that our audits provide a reasonable basis for our opinion.

In our opinion, such consolidated financial statements present fairly, in all material respects, the financial position of the Company as of December 31, 2011 and 2010, and the results of its operations and its cash flows for each of the three years in the period ended December 31, 2011, in conformity with accounting principles generally accepted in the United States of America.

We have also audited, in accordance with the standards of the Public Company Accounting Oversight Board (United States), the Company’s internal control over financial reporting as of December 31, 2011, based on the criteria established in *Internal Control—Integrated Framework* issued by the Committee of Sponsoring Organizations of the Treadway Commission and our report dated February 24, 2012 expressed an unqualified opinion on the Company’s internal control over financial reporting.

/s/ DELOITTE & TOUCHE LLP

San Jose, California
February 24, 2012

OPENTABLE, INC.
CONSOLIDATED BALANCE SHEETS

	December 31,	
	2011	2010
ASSETS		
CURRENT ASSETS:		
Cash and cash equivalents	\$ 36,519,000	\$ 33,444,000
Short-term investments	13,411,000	9,080,000
Accounts receivable, net of allowance for doubtful accounts of \$1,315,000, and \$1,260,000 at December 31, 2011 and 2010	18,795,000	13,292,000
Prepaid expenses and other current assets	2,708,000	2,919,000
Deferred tax assets	11,238,000	7,882,000
Restricted cash	—	167,000
Total current assets	82,671,000	66,784,000
Property, equipment and software, net	16,150,000	14,612,000
Goodwill	42,312,000	42,347,000
Intangible assets	16,403,000	20,248,000
Deferred tax asset	5,466,000	5,539,000
Other assets	813,000	366,000
TOTAL ASSETS	\$163,815,000	\$149,896,000
LIABILITIES AND STOCKHOLDERS' EQUITY		
CURRENT LIABILITIES:		
Accounts payable	\$ 2,210,000	\$ 1,862,000
Accrued expenses	4,794,000	5,804,000
Accrued compensation	4,518,000	4,189,000
Deferred revenue	1,752,000	1,852,000
Dining rewards payable	20,827,000	15,398,000
Total current liabilities	34,101,000	29,105,000
Deferred revenue—non-current	2,249,000	2,802,000
Deferred tax liabilities	3,915,000	5,644,000
Income tax liabilities	13,215,000	8,577,000
Other long-term liabilities	108,000	1,623,000
Total liabilities	53,588,000	47,751,000
COMMITMENTS AND CONTINGENCIES (Note 9)		
STOCKHOLDERS' EQUITY:		
Common stock, \$0.0001 par value—100,000,000 shares authorized; 24,009,404 and 23,507,765 shares issued, 22,709,857 and 23,297,518 shares outstanding at December 31, 2011 and 2010	2,000	2,000
Additional paid-in capital	171,465,000	143,292,000
Treasury stock, at cost (1,299,547 and 210,247 shares at December 31, 2011 and 2010)	(41,963,000)	(647,000)
Accumulated other comprehensive loss	(1,634,000)	(1,305,000)
Accumulated deficit	(17,643,000)	(39,197,000)
Total stockholders' equity	110,227,000	102,145,000
TOTAL LIABILITIES AND STOCKHOLDERS' EQUITY	\$163,815,000	\$149,896,000

See notes to consolidated financial statements.

OPENTABLE, INC.
CONSOLIDATED INCOME STATEMENTS

	<u>Year Ended December 31,</u>		
	<u>2011</u>	<u>2010</u>	<u>2009</u>
REVENUES	\$139,518,000	\$98,991,000	\$68,596,000
COSTS AND EXPENSES:			
Operations and support	39,350,000	27,803,000	20,736,000
Sales and marketing	28,697,000	21,673,000	15,525,000
Technology	14,691,000	12,345,000	10,043,000
General and administrative	24,157,000	19,252,000	13,608,000
Total costs and expenses	<u>106,895,000</u>	<u>81,073,000</u>	<u>59,912,000</u>
Income from operations	32,623,000	17,918,000	8,684,000
Other income, net	98,000	241,000	346,000
Income before taxes	32,721,000	18,159,000	9,030,000
Income tax expense	11,167,000	4,080,000	3,963,000
NET INCOME	<u>\$ 21,554,000</u>	<u>\$14,079,000</u>	<u>\$ 5,067,000</u>
Net income per share (see Note 2):			
Basic	<u>\$ 0.92</u>	<u>\$ 0.62</u>	<u>\$ 0.28</u>
Diluted	<u>\$ 0.88</u>	<u>\$ 0.58</u>	<u>\$ 0.22</u>
Weighted average shares outstanding:			
Basic	23,525,000	22,602,000	17,352,000
Diluted	24,436,000	23,979,000	22,467,000

See notes to consolidated financial statements.

OPENTABLE, INC.
CONSOLIDATED STATEMENTS OF STOCKHOLDERS' EQUITY AND COMPREHENSIVE INCOME

	Series A Convertible Preferred Stock		Series B Convertible Preferred Stock		Additional Paid-in Capital	Common Stock		Treasury Stock		Accumulated Other Comprehensive Loss	Accumulated Deficit	Total	Comprehensive Income
	Shares	Amount	Shares	Amount		Shares	Amount	Shares	Amount				
Balance at January 1, 2009	6,898,187	\$ 6,925,000	2,177,550	\$ 14,984,000	\$ 64,060,000	10,944,421	\$ 1,000	210,247	\$ (647,000)	\$ (296,000)	\$(58,343,000)	\$ 26,684,000	
Conversion of preferred stock to common in connection with initial public offering	(6,898,187)	(6,925,000)	(2,177,550)	(14,984,000)	21,909,000	9,075,737	1,000					1,000	
Issuance of common stock in connection with initial public offering, net of issuance costs of \$5,811,000					34,638,000	2,022,684						34,638,000	
Issuance of common stock in connection with cashless warrant exercise						154,599						—	
Issuance of common stock upon exercise of employee stock options					2,223,000	245,028						2,223,000	
Tax benefit from disqualifying dispositions					1,703,000							1,703,000	
Stock-based compensation expense					2,921,000							2,921,000	
Foreign currency translation										266,000		266,000	\$ 266,000
Unrealized loss on investments										(98,000)		(98,000)	(98,000)
Net income											5,067,000	5,067,000	5,067,000
Comprehensive income													\$ 5,235,000
Balance at December 31, 2009	—	—	—	—	127,454,000	22,442,469	2,000	210,247	(647,000)	(128,000)	(53,276,000)	73,405,000	
Issuance of common stock upon exercise of employee stock options					6,299,000	855,049						6,299,000	
Tax benefit from disqualifying dispositions					1,271,000							1,271,000	
Stock-based compensation expense					8,268,000							8,268,000	
Foreign currency translation										(1,210,000)		(1,210,000)	(1,210,000)
Unrealized gain on investments										33,000		33,000	33,000
Net income											14,079,000	14,079,000	14,079,000
Comprehensive income													\$12,902,000
Balance at December 31, 2010	—	—	—	—	143,292,000	23,297,518	2,000	210,247	(647,000)	(1,305,000)	(39,197,000)	102,145,000	
Issuance of common stock upon exercise of employee stock options					5,981,000	501,639						5,981,000	
Tax benefit from disqualifying dispositions					11,098,000							11,098,000	
Share repurchase program						(1,089,300)		1,089,300	(41,316,000)			(41,316,000)	
Stock-based compensation expense					11,094,000							11,094,000	
Foreign currency translation										(331,000)		(331,000)	(331,000)
Unrealized gain on investments										2,000		2,000	2,000
Net income											21,554,000	21,554,000	21,554,000
Comprehensive income													\$21,225,000
Balance at December 31, 2011	—	\$ —	—	\$ —	\$171,465,000	22,709,857	\$2,000	1,299,547	\$(41,963,000)	\$(1,634,000)	\$(17,643,000)	\$110,227,000	

See notes to consolidated financial statements.

OPENTABLE, INC.
CONSOLIDATED STATEMENTS OF CASH FLOWS

	Year Ended December 31,		
	2011	2010	2009
OPERATING ACTIVITIES:			
Net income	\$ 21,554,000	\$ 14,079,000	\$ 5,067,000
Adjustments to reconcile net income to net cash provided by operating activities:			
Depreciation and amortization	8,047,000	6,361,000	5,154,000
Amortization of intangibles	3,958,000	1,207,000	74,000
Provision for doubtful accounts	2,113,000	1,488,000	1,824,000
Stock-based compensation	10,729,000	8,051,000	2,818,000
Write-off of property, equipment and software	972,000	478,000	631,000
Deferred taxes	(3,284,000)	(5,570,000)	3,007,000
Excess tax benefit related to stock-based compensation	(11,098,000)	(1,271,000)	(1,703,000)
Change in contingent liability	(1,392,000)	—	—
Changes in operating assets and liabilities:			
Accounts receivable	(7,657,000)	(4,905,000)	(3,059,000)
Prepaid expenses and other current assets	(51,000)	(751,000)	(267,000)
Accounts payable and accrued expenses	10,304,000	1,860,000	840,000
Accrued compensation	312,000	648,000	209,000
Deferred revenue	(639,000)	(482,000)	(55,000)
Long-term liabilities	2,779,000	8,674,000	—
Dining rewards payable	5,424,000	3,489,000	3,149,000
Net cash provided by operating activities	<u>42,071,000</u>	<u>33,356,000</u>	<u>17,689,000</u>
INVESTING ACTIVITIES:			
Purchases of property, equipment and software	(9,584,000)	(9,327,000)	(5,996,000)
Purchases of investments	(31,959,000)	(28,993,000)	(83,545,000)
Sales of investments	27,436,000	69,552,000	50,413,000
Acquisition of businesses	—	(56,170,000)	(3,000,000)
Change in restricted cash	176,000	—	—
Net cash used in investing activities	<u>(13,931,000)</u>	<u>(24,938,000)</u>	<u>(42,128,000)</u>
FINANCING ACTIVITIES:			
Excess tax benefit related to stock-based compensation	11,098,000	1,271,000	1,703,000
Proceeds from issuance of common stock upon exercise of employee stock options	5,437,000	5,069,000	985,000
Change in cash overdrafts	—	(988,000)	988,000
Repurchases of common stock	(41,316,000)	—	—
Proceeds from issuance of common stock in connection with initial public offering, net of offering costs	—	—	34,823,000
Net cash provided by (used in) financing activities	<u>(24,781,000)</u>	<u>5,352,000</u>	<u>38,499,000</u>
EFFECT OF EXCHANGE RATES ON CASH	(284,000)	(133,000)	219,000
NET INCREASE IN CASH AND CASH EQUIVALENTS	3,075,000	13,637,000	14,279,000
CASH AND CASH EQUIVALENTS—Beginning of year	33,444,000	19,807,000	5,528,000
CASH AND CASH EQUIVALENTS—End of year	<u>\$ 36,519,000</u>	<u>\$ 33,444,000</u>	<u>\$ 19,807,000</u>
SUPPLEMENTAL DISCLOSURE OF OTHER CASH FLOW INFORMATION:			
Cash paid for income taxes	<u>\$ 611,000</u>	<u>\$ 1,165,000</u>	<u>\$ 1,137,000</u>
SUPPLEMENTAL DISCLOSURE OF NONCASH OPERATING ACTIVITIES:			
Contingent liability recorded in other long-term liabilities	<u>\$ 21,000</u>	<u>\$ 1,413,000</u>	<u>\$ —</u>
Unpaid portion of acquisition purchase price recorded in accrued expenses	<u>\$ —</u>	<u>\$ 150,000</u>	<u>\$ —</u>
SUPPLEMENTAL DISCLOSURE OF NONCASH INVESTING AND FINANCING ACTIVITIES:			
Purchase of property and equipment recorded in accounts payable	<u>\$ 958,000</u>	<u>\$ 273,000</u>	<u>\$ 280,000</u>
Vesting of early exercised stock options	<u>\$ 544,000</u>	<u>\$ 1,206,000</u>	<u>\$ 1,239,000</u>
Conversion of convertible preferred stock to common stock	<u>\$ —</u>	<u>\$ —</u>	<u>\$ 21,909,000</u>

See notes to consolidated financial statements.

OPENTABLE, INC.
NOTES TO CONSOLIDATED FINANCIAL STATEMENTS
YEARS ENDED DECEMBER 31, 2011, 2010 AND 2009

1. Organization and Description of Business

OpenTable, Inc. (together with its subsidiaries including toptable.co.uk Ltd., or “toptable”, which we acquired in October 2010, “OpenTable” or the “Company”), was incorporated on October 13, 1998, and is a Delaware corporation. The Company provides solutions that form an online network connecting reservation-taking restaurants and people who dine at those restaurants. For restaurant customers, the Company provides a proprietary Electronic Reservation Book, or ERB, and Connect. The ERB combines proprietary software and computer hardware to deliver a solution that computerizes restaurant host-stand operations and replaces traditional pen-and-paper reservation books. The ERB streamlines and enhances a number of business-critical functions and processes for restaurants, including reservation management, table management, guest recognition and email marketing. For restaurants that do not require the operational benefits of the ERB, OpenTable offers Connect, a web-based solution that enables participating restaurants to receive reservations from OpenTable websites and mobile applications as well as the websites and mobile applications of OpenTable’s partners and restaurant customers. For diners, the Company operates www.opentable.com and www.toptable.com, popular restaurant reservation websites, and also provides a variety of mobile applications. The OpenTable websites and mobile applications enable diners to find, choose and book tables at restaurants on the OpenTable network that use ERB and Connect in real time, overcoming the inefficiencies associated with the traditional process of reserving by phone.

Certain Significant Risks and Uncertainties

The Company operates in a dynamic industry, and accordingly, can be affected by a variety of factors. For example, management of the Company believes that changes in any of the following areas could have a significant negative effect on the Company in terms of its future financial position, results of operations or cash flows: the ability to maintain an adequate rate of growth; the impact of the current economic climate on its business; the ability to effectively manage its growth; the ability to attract new restaurant customers; the ability to increase the number of visitors to its websites and convert those visitors into diners; and the ability to retain existing restaurant customers and diners and encourage repeat reservations.

2. Summary of Significant Accounting Policies

Principles of Consolidation

These consolidated financial statements include the accounts of OpenTable, Inc. and its wholly-owned subsidiaries. All intercompany accounts and transactions have been eliminated in consolidation.

Use of Estimates

The preparation of the Company’s financial statements in conformity with accounting principles generally accepted in the United States of America (“GAAP”) requires management to make estimates and assumptions that affect the reported amounts of assets and liabilities and disclosure of contingent assets and liabilities at the date of the financial statements and the reported amounts of income and expenses during the reporting period. These estimates are based on information available as of the date of the financial statements; therefore, actual results could differ from those estimates.

OPENTABLE, INC.
NOTES TO CONSOLIDATED FINANCIAL STATEMENTS (Continued)
YEARS ENDED DECEMBER 31, 2011, 2010 AND 2009

2. Summary of Significant Accounting Policies (Continued)

Foreign Currency Translation

The Company's operations are conducted in various countries around the world and the financial statements of its foreign subsidiaries are reported in the applicable foreign currencies (functional currencies). Financial information is translated from the applicable functional currency to the U.S. dollar (the reporting currency) for inclusion in the Company's consolidated financial statements. Income, expenses and cash flows are translated at average exchange rates prevailing during the fiscal period, and assets and liabilities are translated at fiscal period-end exchange rates. Resulting translation adjustments are included as a component of accumulated other comprehensive loss in stockholders' equity. Foreign exchange transaction gains and losses are included in Other Income, net in the accompanying consolidated income statements. Exchange gains and losses on intercompany balances that are considered permanently invested are also included as a component of accumulated other comprehensive loss in stockholders' equity.

Cash and Cash Equivalents

The Company considers all highly liquid short-term investments with original maturities of three months or less at the time of purchase to be cash equivalents. At December 31, 2011 and 2010, cash and cash equivalents consist of cash, money market accounts, certificates of deposit and U.S. government agency securities.

Restricted Cash

Restricted cash represents money market accounts and a certificate of deposit held at a financial institution principally as security for deposits maintained in connection with the Company's credit card processors.

Short-term Investments

Short-term investments consist mainly of U.S. government agency securities and certificates of deposit. The Company classifies its investments as available-for-sale securities. The Company has classified all available for sale securities with readily available markets as short term, even though the stated maturity may be one year or more beyond the current balance sheet date, because of the intent to sell those securities as necessary, prior to maturity to meet liquidity needs. Available-for-sale securities are carried at fair value with unrealized gains and losses reported as a component of accumulated other comprehensive income loss in stockholders' equity. For the twelve month periods ended December 31, 2011, 2010, and 2009, realized and unrealized gains and losses on investments were not material and no impairment charges were recognized. An impairment charge is recorded in the consolidated income statements for declines in fair value below the cost of an individual investment that are deemed to be other than temporary. Management judges whether a decline in value is temporary based on the length of time that the fair market value has been below cost combined with the severity of the decline.

If a debt security in an unrealized loss position is deemed to be other-than-temporary, the difference between the security's then-current amortized cost basis and fair value is separated into (i) the amount of the impairment related to the credit loss (i.e., the credit loss component) and (ii) the

OPENTABLE, INC.
NOTES TO CONSOLIDATED FINANCIAL STATEMENTS (Continued)
YEARS ENDED DECEMBER 31, 2011, 2010 AND 2009

2. Summary of Significant Accounting Policies (Continued)

amount of the impairment related to all other factors (i.e., the non-credit loss component). The credit loss component is recognized in earnings. The non-credit loss component would be recognized in accumulated other comprehensive loss.

Fair Value

The Company records its financial assets and liabilities at fair value. The accounting standard for fair value provides a framework for measuring fair value, and defines fair value as the price that would be received to sell an asset or paid to transfer a liability (an exit price) in an orderly transaction between market participants at the reporting date. The accounting standard establishes a three-tier hierarchy, which prioritizes the inputs used in the valuation methodologies in measuring fair value:

- ***Level 1***—Quoted prices in active markets for identical assets or liabilities. The Company considers a market to be active when transactions for the asset occur with sufficient frequency and volume to provide pricing information on an ongoing basis.
- ***Level 2***—Inputs other than Level 1 that are observable, either directly or indirectly, such as quoted prices for similar assets or liabilities; quoted prices in markets that are not active; or other inputs that are observable or can be corroborated by observable market data for substantially the full term of the assets or liabilities.
- ***Level 3***—Unobservable inputs that are supported by little or no market activity and that are significant to the fair value of the assets or liabilities. The valuation of Level 3 investments requires the use of significant management judgments or estimation.

Concentrations of Credit Risk

Financial instruments which potentially subject the Company to concentration of credit risk consist primarily of cash and cash equivalents, restricted cash, short-term investments and accounts receivable. The Company places its cash and cash equivalents, short-term investments and restricted cash with major financial institutions throughout the world, which management assesses to be of high credit quality, in order to limit the exposure of each investment.

Credit risk with respect to accounts receivable is dispersed due to the large number of customers. In addition, the Company's credit risk is mitigated by the relatively short collection period. Collateral is not required for accounts receivable. The Company maintains an allowance for doubtful accounts receivable balances. The allowance is based upon historical loss patterns, the number of days that billings are past due and an evaluation of the potential risk of loss associated with problem accounts. Accounts receivable written-off against the allowance for doubtful accounts were \$2,058,000, \$1,279,000 and \$1,777,000 for the years ended December 31, 2011, 2010 and 2009, respectively.

Property, Equipment and Software, net

Property, equipment and software, net is stated at cost less accumulated depreciation and amortization. Depreciation is computed using the straight-line method over the estimated useful lives of the assets, which is four years for restaurant hardware and three years for all other asset categories

OPENTABLE, INC.
NOTES TO CONSOLIDATED FINANCIAL STATEMENTS (Continued)
YEARS ENDED DECEMBER 31, 2011, 2010 AND 2009

2. Summary of Significant Accounting Policies (Continued)

except leasehold improvement, which are amortized over the shorter of the lease term or expected useful life of the improvements.

Goodwill and Intangible Assets

The Company accounts for goodwill and intangible assets in accordance with Accounting Standards Codification (“ASC”) Topic 350 Intangibles—Goodwill and Other (“Topic 350”). Goodwill and intangible assets with indefinite lives are not amortized but are tested for impairment on an annual or whenever events or changes in circumstances indicate that the carrying amount of these assets may not be recoverable. Intangible assets with finite useful lives are amortized using the straight-line method over their useful lives and are reviewed for impairment in accordance with Topic 350.

Website and Internal-Use Software Development Costs

Costs related to website and internal-use software development are accounted for in accordance with ASC Topic 350-50—Intangibles-Goodwill and Other. Such software is primarily related to the Company’s websites and mobile applications, including support systems. The Company begins to capitalize its costs to develop software when preliminary development efforts are successfully completed, management has authorized and committed project funding, and it is probable that the project will be completed and the software will be used as intended. Costs incurred prior to meeting these criteria are expensed as incurred and recorded within Technology expenses within the accompanying consolidated income statements. Capitalized costs are amortized on a straight-line basis over the estimated useful life of the related asset, generally estimated between two to three years. Costs incurred for enhancements that are expected to result in additional features or functionality are capitalized and amortized over the estimated useful life of the enhancements, generally between two and three years.

The Company capitalized \$3,426,000, \$2,933,000 and \$1,505,000 in website and internal-use software development costs during the years ended December 31, 2011, 2010 and 2009, respectively. Amortization expense totaled \$2,555,000, \$1,416,000 and \$685,000 during the fiscal years ended December 31, 2011, 2010 and 2009, respectively. Such costs are recorded in operations and support within the accompanying consolidated income statements.

The Company follows the guidance in ASC Topic 985—Software in accounting for costs incurred in connection with development of the software contained in the ERB used by all restaurant customers, and in a limited number of certain transactions the Company sells reservation systems which do not include the Company’s ongoing service. All costs incurred to establish the technological feasibility of a computer product to be sold, leased or otherwise marketed are expensed as incurred. Costs incurred subsequent to establishing technological feasibility and through general product release are capitalized and amortized over the estimated product life. The period between technological feasibility and general product release is generally short and the costs incurred during this stage are not material for the years ended December 31, 2011, 2010 and 2009 and are expensed as incurred in Technology expense.

OPENTABLE, INC.
NOTES TO CONSOLIDATED FINANCIAL STATEMENTS (Continued)
YEARS ENDED DECEMBER 31, 2011, 2010 AND 2009

2. Summary of Significant Accounting Policies (Continued)

Impairment of Long-Lived Assets and Long-Lived Assets to be Disposed of

The Company evaluates its long-lived assets for impairment whenever events or changes in circumstances indicate that the carrying amount of such assets may not be recoverable. Recoverability of assets to be held and used is measured by a comparison of the carrying amount of an asset group to future undiscounted net cash flows expected to be generated by the asset group. If such assets are considered to be impaired, the impairment to be recognized is measured by the amount by which the carrying amount of the assets exceeds the fair value of the assets. There were no impairments of long-lived assets during the twelve months ended December 31, 2011, 2010 and 2009, respectively. Assets to be disposed of are reported at the lower of the carrying amount or fair value less costs to sell.

Revenue Recognition

The Company's revenues include monthly subscription fees, a per-seated diner fee for each diner seated through the Company's online reservation system, and other revenue, including installation fees for the Company's ERB (including training). As the Company provides its application as a service, the Company follows ASC Topic 605—Revenue Recognition. The Company recognizes revenue when all of the following conditions are met: there is persuasive evidence of an arrangement; the service has been provided to the customer; the collection of the fees is reasonably assured; and the amount of fees to be paid by the customer is fixed or determinable. Amounts paid by the customer include the right to use Company hardware during the service period. Proportionate revenue related to the right to use Company hardware accounts for less than 10% of revenue for all periods presented.

Subscription revenues are recognized on a straight-line basis during the contractual period over which the service is delivered. Reservation revenues (or per-seated diner fees) are recognized on a transaction-by-transaction basis, as diners are seated by restaurant customers. Amounts that have been invoiced are recorded in accounts receivable and in deferred revenue or revenues, depending on whether the revenue recognition criteria have been met. Revenues are shown net of \$12,444,000, \$8,767,000 and \$6,940,000 for the years ended December 31, 2011, 2010 and 2009, respectively, related to redeemable Dining Points issued to diners during the respective periods.

During the third quarter of 2010, the Company began selling third-party restaurant coupons through its websites. The Company earns a commission for acting as an agent in these transactions which is recorded on a net basis and is included in revenue upon completion of the third-party coupon sale. The liability for redemption and potential income for breakage remain with the third-party restaurants; therefore, the Company does not record redemption or breakage of the coupons. The Company applies a sales allowance for potential coupon refunds. The Company began to phase-out this third-party coupon program in the fourth quarter of 2011.

Revenues from the installation of the ERB is recognized on a straight-line basis over the estimated customer life, commencing with customer acceptance. As of December 31, 2011, the estimated customer life was approximately three to six years, based on historical restaurant customer termination activity. To date the impact of changes in the estimated customer life has not been material to the Company's results of operations or financial position.

OPENTABLE, INC.
NOTES TO CONSOLIDATED FINANCIAL STATEMENTS (Continued)
YEARS ENDED DECEMBER 31, 2011, 2010 AND 2009

2. Summary of Significant Accounting Policies (Continued)

Revenue is recognized net of any taxes collected from customers and subsequently remitted to governmental authorities.

Dining Point Loyalty Program

The Company provides a points-based loyalty program, “OpenTable Dining Rewards,” to registered diners who book and honor reservations through the OpenTable website. OpenTable Dining Rewards involves the issuance of “Dining Points” which can be accumulated and redeemed for “Dining Checks.” When a diner accumulates a defined minimum number of points, he or she may redeem them for a Dining Check. Diners may present Dining Checks at any OpenTable restaurant and their bill is reduced by the check amount. If a diner does not make a seated reservation within any 12-month period, then his or her account is considered inactive and the accumulated Dining Points for the diner are reset to zero.

The Company recognizes the liability associated with Dining Points as contra-revenue in accordance with ASC Topic 605-50—Revenue Recognition-Customer Payments and Incentives.

The recorded contra-revenue is an estimate of the eventual cash outlay related to the issued Dining Points and is booked at the time the points are earned by the diner (when the diner is “seated” by the restaurant). The Company estimates the contra-revenue for the issued Dining Points by analyzing the historical patterns of redemption and check-cashing activity.

Installation Costs

The incremental direct customer acquisition costs associated with on-site system installations, including direct compensation costs of technicians providing installation services, are expensed as incurred within Operations and Support.

Technology

In the consolidated income statements, technology expense includes employee compensation associated with the development of new technologies.

Operations and Support

In the consolidated income statements, operations and support expense includes employee compensation associated with the installation, support and maintenance of customers, as well as costs associated with restaurant equipment and connectivity, outsourced call center costs, referral payments and shipping costs associated with restaurant equipment. Operations and Support expenses also include amortization of capitalized website and internal-use software development costs.

Advertising Expense

Advertising costs are expensed when incurred and are included in sales and marketing expense in the accompanying consolidated income statements. Advertising costs include direct-marketing costs such as e-mail marketing, pay per click, market research, printing, public relations and tradeshow expenses.

OPENTABLE, INC.
NOTES TO CONSOLIDATED FINANCIAL STATEMENTS (Continued)
YEARS ENDED DECEMBER 31, 2011, 2010 AND 2009

2. Summary of Significant Accounting Policies (Continued)

The Company incurred \$3,578,000, \$1,789,000 and \$1,013,000 of advertising costs during the fiscal years ended December 31, 2011, 2010 and 2009, respectively.

Stock-Based Compensation

The Company measures stock based awards at fair value and recognizes compensation expense for all share-based payment awards made to its employees and directors, including employee stock options and restricted stock units in accordance with ASC Topic 718 (“Topic 718”)—Stock Compensation.

The Company estimates the fair value of stock options granted using the Black-Scholes valuation model. This model requires the Company to make estimates and assumptions including, among other things, estimates regarding the length of time an employee will retain vested stock options before exercising them, the estimated volatility of its common stock price and the number of options that will be forfeited prior to vesting. The fair value is then amortized using a graded vesting attribution method over the requisite service periods of the awards, which is generally the vesting period. Changes in these estimates and assumptions can materially affect the determination of the fair value of stock-based compensation and consequently, the related amount recognized in the consolidated income statements.

The cost of restricted stock units is determined using the fair value of the Company’s common stock on the date of grant. Stock-based compensation expense is recognized using a graded vesting attribution method over the vesting period.

Net Income Per Share

The Company calculates net income per share in accordance with ASC Topic 260—Earnings per Share. Basic and diluted net income per share attributable to common stockholders are presented in conformity with the “two-class method” required for participating securities.

The Company’s weighted average unvested shares subject to repurchase and settled in shares of common stock upon vesting have the non-forfeitable right to receive dividends on an equal basis with common stock and therefore are considered participating securities that must be included in the calculation of net income per share using the two-class method in all presented periods.

In addition, holders of Series A and Series B convertible preferred stock were each entitled to receive annual non-cumulative dividends of \$0.10 and \$0.69 per share for Series A and B, respectively, payable prior and in preference to holders of common stock. In the event a dividend was paid on common stock, Series A and Series B convertible preferred stockholders were entitled to a proportionate share of any such dividend as if they were holders of common shares (on an as-if converted basis). In May 2009, all of the Company’s outstanding convertible preferred stock converted into common stock in connection with the Company’s initial public offering. Under the two-class method, basic net income per share attributable to common stockholders is computed by dividing the net income attributable to common stockholders by the weighted average number of common shares outstanding during the period. Basic net income attributable to common stockholders is computed by an adjustment to subtract from net income the portion of current year earnings that the preferred shareholders would have been entitled to receive pursuant to their dividend rights had all of the year’s earnings been distributed as well as an adjustment to subtract the non-forfeitable right to receive dividends by holders of unvested shares subject to repurchase. No such adjustment to earnings is made

OPENTABLE, INC.
NOTES TO CONSOLIDATED FINANCIAL STATEMENTS (Continued)
YEARS ENDED DECEMBER 31, 2011, 2010 AND 2009

2. Summary of Significant Accounting Policies (Continued)

during periods with a net loss, as the holders of the convertible preferred shares had no obligation to fund losses. Diluted net income per share is computed by using the weighted-average number of common shares outstanding, plus, for periods with net income attributable to common stock, the dilutive effects of stock options. Potential dilutive shares are composed of incremental common shares issuable upon the exercise of stock options and warrants, and unvested common shares subject to repurchase.

Non-vested performance-based awards are included in the diluted shares outstanding each period if established performance criteria have been met at the end of the respective periods. 97,600, 220,000 and 281,000 shares were excluded from the dilutive shares outstanding for the years ended December 31, 2011, 2010 and 2009, respectively, as the performance criteria had not been met as of the respective dates. Anti-dilutive shares in the amounts of 150,000, 114,000 and 388,000 were excluded from the dilutive shares outstanding for the years ended December 31, 2011, 2010 and 2009, respectively.

OPENTABLE, INC.
NOTES TO CONSOLIDATED FINANCIAL STATEMENTS (Continued)
YEARS ENDED DECEMBER 31, 2011, 2010 AND 2009

2. Summary of Significant Accounting Policies (Continued)

The following table sets forth the computation of basic and diluted net income per share for the periods indicated:

	Year Ended December 31,		
	2011	2010	2009
<i>Basic net income per common share calculation:</i>			
Net income	\$21,554,000	\$14,079,000	\$ 5,067,000
Less: Undistributed earnings allocated to participating securities	(20,000)	(142,000)	(154,000)
Net income attributable to common shares—basic	<u>\$21,534,000</u>	<u>\$13,937,000</u>	<u>\$ 4,913,000</u>
Basic weighted average common shares outstanding	23,525,000	22,602,000	17,352,000
Basic net income per share	<u>\$ 0.92</u>	<u>\$ 0.62</u>	<u>\$ 0.28</u>
<i>Diluted net income per common share calculation:</i>			
Net income	\$21,554,000	\$14,079,000	\$ 5,067,000
Less: Undistributed earnings allocated to participating securities	(12,000)	(91,000)	(88,000)
Net income attributable to common shares—diluted	<u>\$21,542,000</u>	<u>\$13,988,000</u>	<u>\$ 4,979,000</u>
Weighted average shares used to compute basic net income per share	23,525,000	22,602,000	17,352,000
Effect of potentially dilutive securities:			
Unvested common shares subject to repurchase	14,000	154,000	391,000
Warrants to purchase common stock	—	—	17,000
Warrants to purchase convertible preferred stock	—	—	65,000
Employee stock options	885,000	1,223,000	1,151,000
Employee stock awards	12,000	—	—
Convertible preferred stock	—	—	3,491,000
Weighted average shares used to compute diluted net income per share	24,436,000	23,979,000	22,467,000
Diluted net income per share	<u>\$ 0.88</u>	<u>\$ 0.58</u>	<u>\$ 0.22</u>

Comprehensive Income

In accordance with ASC Topic 220—Comprehensive Income, the Company reports by major components and as a single total, the change in its net assets during the period from non-owner sources. Comprehensive income consists of net income and accumulated other comprehensive income (loss), which includes certain changes in equity that are excluded from net income. Specifically, it includes cumulative foreign currency translation and the unrealized gain (loss) from investments.

Accumulated other comprehensive loss of \$1,634,000 as of December 31, 2011 was comprised of \$1,637,000 of foreign currency translation losses and \$3,000 of unrealized gain on investments.

OPENTABLE, INC.
NOTES TO CONSOLIDATED FINANCIAL STATEMENTS (Continued)
YEARS ENDED DECEMBER 31, 2011, 2010 AND 2009

2. Summary of Significant Accounting Policies (Continued)

Accumulated other comprehensive loss of \$1,305,000 as of December 31, 2010 was comprised of \$1,306,000 of foreign currency translation losses and \$1,000 of unrealized gain on investments.

Income Taxes

The Company records income taxes using the asset and liability method of accounting for income taxes in accordance with ASC Topic 740—Income Taxes (“Topic 740”). Under this method, income tax expense or benefit is recognized for the amount of taxes payable or refundable for the current year and for deferred tax liabilities and assets for the future tax consequences of events that have been recognized in the Company’s consolidated financial statements or tax returns. The Company accounts for any income tax contingencies in accordance with Topic 740. The measurement of current and deferred tax assets and liabilities is based on provisions of currently enacted tax laws. The effects of any future changes in tax laws or rates have not been considered.

For the preparation of the Company’s consolidated financial statements included herein, the Company estimates its income taxes and tax contingencies in each of the tax jurisdictions in which they operate prior to the completion and filing of its tax returns. This process involves estimating actual current tax expense together with assessing temporary differences resulting from differing treatment of items, such as deferred revenue, for tax and accounting purposes. These differences result in net deferred tax assets and liabilities. The Company must then assess the likelihood that the deferred tax assets will be realizable, and to the extent they believe that realizability is not likely, the Company must establish a valuation allowance. In assessing the need for any additional valuation allowance, the Company considers all the evidence available to us, both positive and negative, including historical levels of income, legislative developments, expectations and risks associated with estimates of future taxable income, and ongoing prudent and feasible tax planning strategies.

As a result of this analysis, for the year ended December 31, 2011 and consistent with prior years, it was determined that certain foreign tax credit carryforwards and foreign branch net operating losses did not meet the “more likely than not” realizability threshold which increased the Company’s valuation allowance to \$2.8 million.

Recently Issued Accounting Standards

In May 2011, the Financial Accounting Standards Board (“FASB”) issued Topic 820—Amendments to Achieve Common Fair Value Measurement and Disclosure Requirements in U.S. GAAP and IFRSs (Topic 820). Topic 820 changes the wording used to describe many of the requirements in U.S. GAAP for measuring fair value and for disclosing information about fair value measurements to ensure consistency between U.S. GAAP and IFRS. Topic 820 also expands the disclosures for fair value measurements that are estimated using significant unobservable (Level 3) inputs. Topic 820 is effective for interim and annual periods beginning after December 15, 2011 and is applied prospectively. The Company anticipates that the adoption of this standard will not materially expand its consolidated financial statement footnote disclosures.

In June 2011, the FASB issued Topic 220—Presentation of Comprehensive Income (Topic 220). Topic 220 eliminates the option to report other comprehensive income and its components in the statement of changes in equity. Topic 220 requires that all nonowner changes in stockholders’ equity be

OPENTABLE, INC.
NOTES TO CONSOLIDATED FINANCIAL STATEMENTS (Continued)
YEARS ENDED DECEMBER 31, 2011, 2010 AND 2009

2. Summary of Significant Accounting Policies (Continued)

presented in either a single continuous statement of comprehensive income or in two separate but consecutive statements. The amended guidance, which must be applied retroactively, is effective for fiscal years, and interim periods within those years, beginning after December 15, 2011, with earlier adoption permitted. The adoption of this standard will change the presentation of the Company's consolidated financial statements but will have no effect on the reported amounts of comprehensive net income.

In September 2011, the FASB issued Accounting Standards Update No. 2011-08, Intangibles—Goodwill and Other (Topic 350)—Testing Goodwill for Impairment. Topic 350 is intended to simplify goodwill impairment testing by adding a qualitative review step to assess whether the required quantitative impairment analysis that exists today is necessary. Topic 350 permits an entity to first perform a qualitative assessment to determine whether it is more likely than not that the fair value of a reporting unit is less than its carrying value. If it is concluded that this is the case, it is necessary to perform the currently prescribed two-step goodwill impairment test. Otherwise, the two-step goodwill impairment test is not required. Topic 350 is effective for interim and annual periods beginning after December 15, 2011 and earlier adoption is permitted. The Company is currently evaluating the impact of adopting this standard on its consolidated financial statements.

3. Acquisitions

Acquisition of GuestBridge

In September 2009, the Company entered into an agreement with GuestBridge, Inc. (“GuestBridge”), a provider of guest management solutions, to purchase substantially all of the assets and assume certain liabilities of GuestBridge for approximately \$3,000,000 in cash. The Company recorded \$1,805,000 of goodwill, \$1,066,000 of identifiable intangible assets and \$129,000 of tangible assets in connection with the acquisition. The Company has included the effects of the transaction within the results of operations, prospectively, from October 2009, the date of acquisition. Pro forma financial information for acquisition accounted for as a business combination has not been presented, as the effects were not material to the Company's historical consolidated financial statements.

Acquisition of Table Maestro

In August 2010, the Company acquired substantially all of the assets and certain liabilities of Table Maestro, LLC (“Table Maestro”), a provider of telephone reservation services for a purchase price of \$1,500,000 in cash and additional contingent performance-based cash payments which were valued at \$1,526,000 on the acquisition date. The accruals for the contingent performance-based cash payments were subsequently reversed by \$1,392,000 in the twelve months ended December 31, 2011, for lack of performance. The Company recorded \$2,756,000 of goodwill and \$289,000 of identifiable intangible assets in connection with the acquisition which is being accounted for as a business combination. The Company has included the effects of the transaction within the results of operations prospectively from August 2010, the date of acquisition. Pro forma financial information for this business combination has not been presented, as the effects were not material to the Company's historical consolidated financial statements.

OPENTABLE, INC.
NOTES TO CONSOLIDATED FINANCIAL STATEMENTS (Continued)
YEARS ENDED DECEMBER 31, 2011, 2010 AND 2009

3. Acquisitions (Continued)

Acquisition of toptable.com

On October 1, 2010, the Company acquired toptable.com (“toptable”), a leading restaurant reservation site in the United Kingdom, for \$55,325,000 in cash. The purchase price was allocated to the acquired assets and liabilities based on their estimated fair values on the acquisition date. On October 1, 2010, the Company recorded \$38,650,000 of goodwill and \$20,583,000 of identifiable intangible assets in connection with the acquisition. Goodwill was calculated as the purchase premium after adjusting for the fair value of net assets acquired and represents the value expected from the synergies created from combining the toptable diner and restaurant reservation network with the Company’s technology, as well as the economies of scale expected from combining the operations of toptable and the Company. Goodwill is not expected to be deductible for tax purposes. Intangible assets recorded as a result of the acquisition include trademarks of \$12,014,000 which has an indefinite life. Intangible assets also include customer relationships of \$7,405,000 and developed technology of \$1,164,000 which are being amortized over their estimated remaining lives of two to three years. The Company has included the effects of the transaction within the results of operations prospectively from October 1, 2010, the date of the acquisition.

The Company’s purchase price allocation for the net assets acquired was as follows:

	<u>October 1, 2010</u>
Cash and cash equivalents	\$ 516,000
Accounts receivable	2,196,000
Prepaid expenses and other current assets	119,000
Deferred tax asset	1,359,000
Property and equipment	370,000
Goodwill	38,650,000
Intangible assets	20,583,000
Other assets	50,000
TOTAL ASSETS	<u>\$63,843,000</u>
Accounts payable	\$ 576,000
Accrued expenses	1,329,000
Accrued compensation	544,000
Dining rewards payable	305,000
Deferred tax liability	5,764,000
TOTAL LIABILITIES	<u>\$ 8,518,000</u>
NET ASSETS ACQUIRED	<u>\$55,325,000</u>

Unaudited Pro Forma Condensed Combined Financial Information

The consolidated financial statements contained herein include the operating results of toptable from October 1, 2010, the date of the acquisition. From the date of acquisition through December 31, 2010, toptable contributed \$3,010,000 to revenues.

OPENTABLE, INC.
NOTES TO CONSOLIDATED FINANCIAL STATEMENTS (Continued)
YEARS ENDED DECEMBER 31, 2011, 2010 AND 2009

3. Acquisitions (Continued)

The unaudited pro forma financial information provided below, for the twelve months ended December 31, 2010 and 2009, assumes the acquisition of toptable occurred on January 1, 2009 and includes the impact of amortizing certain purchase accounting adjustments, such as intangible assets and the pay down of outstanding third party debt, as of January 1, 2009.

	Twelve Months Ended December 31,	
	2010	2009
Revenues	\$107,133,000	\$79,043,000
Income from operations	16,140,000	6,745,000
Net income	12,047,000	2,603,000
Net income per share		
Basic	\$ 0.53	\$ 0.15
Diluted	\$ 0.50	\$ 0.11

4. Short-Term Investments and Fair Value Measurements

Short-term investments are summarized as follows:

	Amortized Cost	Unrealized Gains	Unrealized Losses	Estimated Fair Market Value
At December 31, 2011:				
U.S. government and agency securities	\$10,538,000	\$3,000	\$(1,000)	\$10,540,000
Certificates of deposit	2,871,000	—	—	2,871,000
Total	\$13,409,000	\$3,000	\$(1,000)	\$13,411,000
	Amortized Cost	Unrealized Gains	Unrealized Losses	Estimated Fair Market Value
At December 31, 2010:				
U.S. government and agency securities	\$8,099,000	\$1,000	\$—	\$8,100,000
Certificates of deposit	980,000	—	—	980,000
Total	\$9,079,000	\$1,000	\$—	\$9,080,000

As of December 31, 2011, there were no investments that had maturity dates of greater than one year.

OPENTABLE, INC.
NOTES TO CONSOLIDATED FINANCIAL STATEMENTS (Continued)
YEARS ENDED DECEMBER 31, 2011, 2010 AND 2009

4. Short-Term Investments and Fair Value Measurements (Continued)

The following table represents the Company's fair value hierarchy for its financial assets:

	December 31, 2011			December 31, 2010		
	Aggregate Fair Value	Level 1	Level 2	Aggregate Fair Value	Level 1	Level 2
U.S. government and agency securities	\$10,540,000	\$—	\$10,540,000	\$8,100,000	\$—	\$8,100,000
Certificates of deposit	2,871,000	—	2,871,000	980,000	—	980,000
Total short-term investments . . .	\$13,411,000	\$—	\$13,411,000	\$9,080,000	\$—	\$9,080,000

Subsequent to the issuance of the Company's 2010 consolidated financial statements, the Company determined that the \$8,100,000 of investments in U.S. government and agency securities as of December 31, 2010 should be classified as Level 2 investments (rather than Level 1 investments as originally classified) as these specific securities are not actively traded. Accordingly, the Company has corrected the classification of these securities from Level 1 to Level 2 in the table of fair value measurements as of December 31, 2010.

The Company chose not to elect the fair value option as prescribed by ASC Topic 825—Financial Instruments for its financial assets and liabilities that had not been previously carried at fair value. Therefore, financial assets and liabilities not carried at fair value, such as accounts payable, are still reported at their carrying values.

5. Goodwill and Intangible Assets

As of December 31, 2011, goodwill included \$37,751,000 resulting from the acquisition of toptable (adjusted by \$899,000 for the change in foreign currency exchange rates from the date of acquisition through December 31, 2011), \$2,756,000 resulting from the acquisition of Table Maestro, and \$1,805,000 resulting from the acquisition of GuestBridge. A summary of goodwill by segment is as follows:

	December 31,	
	2011	2010
North America	\$ 4,561,000	\$ 4,561,000
International	37,751,000	37,786,000
Total Goodwill	\$42,312,000	\$42,347,000

OPENTABLE, INC.
NOTES TO CONSOLIDATED FINANCIAL STATEMENTS (Continued)
YEARS ENDED DECEMBER 31, 2011, 2010 AND 2009

5. Goodwill and Intangible Assets (Continued)

A summary of intangible assets as of December 31, 2011 and 2010 is as follows:

	December 31,			December 31,		
	2011			2010		
	Gross Carrying Value	Accumulated Amortization	Total	Gross Carrying Value	Accumulated Amortization	Total
Trademarks—finite life . . .	\$ 132,000	\$ 51,000	\$ 81,000	\$ 133,000	\$ 23,000	\$ 110,000
Trademarks—indefinite life	11,752,000	—	11,752,000	11,764,000	—	11,764,000
Customer relationships . . .	8,091,000	4,042,000	4,049,000	8,098,000	940,000	7,158,000
Developed technology	1,514,000	993,000	521,000	1,515,000	299,000	1,216,000
Total intangible assets	<u>\$21,489,000</u>	<u>\$5,086,000</u>	<u>\$16,403,000</u>	<u>\$21,510,000</u>	<u>\$1,262,000</u>	<u>\$20,248,000</u>

Intangible assets with finite lives are amortized on a straight-line basis over their estimated useful lives which range from one to four years. Amortization of intangible assets was \$3,958,000, \$1,207,000 and \$74,000 for the years ended December 31, 2011, 2010 and 2009, respectively. Based on the current amount of intangibles subject to amortization, estimated future annual amortization expense is as follows: 2012: \$3,285,000; 2013: \$1,300,000; 2014: \$67,000.

For the annual impairment analysis, goodwill and intangibles with indefinite lives are evaluated at the reporting unit level. The evaluation for impairment is performed by comparing the reporting unit's carrying amount, including goodwill and intangibles, to the fair value of the reporting unit. If the carrying amounts exceed the reporting unit fair value, then the second step of the impairment test is performed to determine the amount of the impairment loss. The Company has defined its annual goodwill impairment evaluation date as August 31. The Company performed its annual goodwill impairment evaluation as of August 31, 2011 and determined that there was no impairment of goodwill or intangibles as of December 31, 2011.

6. Property, Equipment and Software

Property, equipment and software consists of the following:

	December 31,	
	2011	2010
Restaurant hardware	\$ 19,085,000	\$ 18,086,000
Computer equipment	4,134,000	3,206,000
Software	2,257,000	1,471,000
Website and internal-use software development costs . .	7,719,000	4,964,000
Furniture and fixtures	405,000	299,000
Leasehold improvements	344,000	204,000
Total	33,944,000	28,230,000
Accumulated depreciation	<u>(17,794,000)</u>	<u>(13,618,000)</u>
Property, equipment and software, net	<u>\$ 16,150,000</u>	<u>\$ 14,612,000</u>

OPENTABLE, INC.
NOTES TO CONSOLIDATED FINANCIAL STATEMENTS (Continued)
YEARS ENDED DECEMBER 31, 2011, 2010 AND 2009

7. Line of Credit

The Company has a \$5,000,000 line of credit for working capital needs available through July 2012 and no amounts were outstanding under this line of credit as of December 31, 2011 and 2010. This line of credit agreement requires the Company to comply with various financial and non-financial covenants and precludes the payment of dividends to stockholders without the permission of the lender. The Company was in compliance with all financial covenants at December 31, 2011 and 2010.

8. Other Income, Net

Other income, net, consists of the following:

	Year Ended December 31,		
	2011	2010	2009
Interest income	\$ 87,000	\$216,000	\$351,000
Interest expense	—	(2,000)	(3,000)
Foreign exchange transaction losses, net	(28,000)	(14,000)	(31,000)
Other non-operating income	39,000	41,000	29,000
Total	\$ 98,000	\$241,000	\$346,000

9. Commitments and Contingencies

Office Facility Leases

The Company leases its office facilities under operating lease agreements that expire at various dates through 2016. The terms of the lease agreements provide for rental payments on a graduated basis. The Company recognizes rent expense on a straight-line basis over the lease period.

Rental expense, principally for leased office space under operating lease commitments, was \$1,877,000, \$1,867,000 and \$1,719,000 for the years ended December 31, 2011, 2010 and 2009, respectively.

Aggregate Future Lease Commitments

The Company's minimum payments under non-cancelable operating leases for office space having initial terms in excess of one year are as follows at December 31, 2011:

	Operating Leases
Year ending December 31:	
2012	\$1,859,000
2013	726,000
2014	266,000
2015	118,000
2016	35,000
Total minimum lease payments	\$3,004,000

OPENTABLE, INC.
NOTES TO CONSOLIDATED FINANCIAL STATEMENTS (Continued)
YEARS ENDED DECEMBER 31, 2011, 2010 AND 2009

9. Commitments and Contingencies (Continued)

Litigation

The Company is subject to various legal proceedings and claims arising in the ordinary course of business. Although occasional adverse decisions or settlements may occur, management believes that the final disposition of such matters will not have a material adverse effect on the Company's business, financial position, results of operations or cash flows.

10. Stockholders' Equity

Initial Public Offering of Common Stock

On May 21, 2009, the Company completed its initial public offering whereby the Company sold 2,022,684 shares of common stock for a price of \$20.00 per share. As part of the offering 1,427,316 shares were also sold by existing shareholders at a price of \$20.00 per share. The Company received \$34,638,000 net of offering costs. Approximately \$5,811,000 in offering costs were incurred and have been deducted from additional paid-in capital.

Common Stock

At December 31, 2011, there were 100,000,000 shares of common stock authorized, 24,009,404 shares issued and 22,709,857 shares outstanding. Holders of common stock are entitled to dividends if and when declared by the board of directors.

Treasury Stock

On November 30, 2011, the Company announced the Board of Directors' approval of a \$50 million share repurchase program. For the twelve months ended December 31, 2011, the Company repurchased 1,089,300 shares of common stock for \$41.3 million. The Company completed the share repurchase program on January 6, 2012, with the purchase of an additional 221,673 shares of common stock.

Common Stock Subject To Repurchase

Historically, the Company typically allowed employees to exercise options prior to vesting. However, beginning in May 2008, options granted did not contain an early exercise provision. The Company has the right to repurchase at the original purchase price any unvested (but issued) common shares upon termination of service of an employee. The consideration received for an exercise of an option is considered to be a deposit of the exercise price and the related dollar amount is recorded as a liability. The shares and liability are reclassified into equity on a ratable basis as the award vests. The Company recorded a liability in accrued expenses of \$1,000 and \$544,000 relating to 76 and 106,294 options that were exercised and are unvested at December 31, 2011 and 2010, respectively. These shares which are subject to a repurchase right held by the Company are included in issued and outstanding shares as of December 31, 2011 and 2010.

OPENTABLE, INC.
NOTES TO CONSOLIDATED FINANCIAL STATEMENTS (Continued)
YEARS ENDED DECEMBER 31, 2011, 2010 AND 2009

10. Stockholders' Equity (Continued)

Common Stock Reserved For Future Issuance

At December 31, 2011, the Company has reserved the following shares of common stock for future issuances in connection with:

Stock options and restricted stock units outstanding	1,871,288
Shares available for future grants	<u>1,716,577</u>
Total	<u>3,587,865</u>

Stock Based Compensation

The Company applies the provisions of ASC Topic 718—Stock Compensation (Topic 718), which requires compensation costs related to share-based transactions, including employee stock options, to be recognized in the financial statements based on fair value.

Under Topic 718, the fair value of each option award is estimated on the date of grant using the Black-Scholes option pricing model.

The Company determined weighted average valuation assumptions as follows:

- Volatility—As the Company does not have an extensive trading history for its common stock, the expected stock price volatility for the Company's common stock was estimated by taking the median historic price volatility for industry peers based on daily price observations over a period equivalent to the expected term of the stock option grants. Industry peers consist of several public companies in the technology industry similar in size, stage of life cycle and financial leverage. The Company did not rely on implied volatilities of traded options in its industry peers' common stock because the volume of activity was relatively low.
- Expected term—The expected term was estimated using the simplified method allowed under Topic 718.
- Risk free rate—The risk free interest rate is based on the yields of U.S. Treasury securities with maturities similar to the expected term of the options for each option group.
- Forfeiture rate—The Company estimated the forfeiture rate based on its historical experience with forfeitures. The Company reviews the estimated forfeiture rates each period end and makes changes as factors affecting the forfeiture rate calculations and assumptions change.
- Dividend yield—The Company has never declared or paid any cash dividends and does not presently plan to pay cash dividends in the foreseeable future. Consequently, the Company used an expected dividend yield of zero.

OPENTABLE, INC.
NOTES TO CONSOLIDATED FINANCIAL STATEMENTS (Continued)
YEARS ENDED DECEMBER 31, 2011, 2010 AND 2009

10. Stockholders' Equity (Continued)

The following summarizes the assumptions relating to the Company's stock options for the years ended December 31, 2011, 2010 and 2009, as permitted under Topic 718:

	Year Ended December 31,		
	2011	2010	2009
Dividend yield	0%	0%	0%
Volatility	53% - 55%	51% - 53%	52% - 53%
Risk free interest rate	0.79% - 2.673%	1.38% - 2.95%	2.53% - 2.65%
Expected term, in years	5.00 - 6.08	5.50 - 6.56	6.02 - 6.08

Under Topic 718, the Company recorded net stock-based compensation expense related to stock options of \$8,303,000, \$8,051,000 and \$2,818,000 for the years ended December 31, 2011, 2010 and 2009, respectively. The Company capitalized \$366,000, \$217,000 and \$103,000 of stock-based compensation for the years ended December 31, 2011, 2010 and 2009, respectively, in association with website and software development costs (see Note 2).

Topic 718 requires the benefits of tax deductions in excess of recognized compensation expense to be reported as a financing cash flow, rather than as an operating cash flow. For the years ended December 31, 2011, 2010 and 2009, the Company recorded \$11,098,000, \$1,271,000 and \$1,703,000, respectively, of excess tax benefits from stock-based compensation.

Stock Option Plans

Under the 2009 Equity Incentive Award Plan (the "2009 Plan"), which the Company adopted in 2009, as of December 31, 2011, there were 1,716,577 shares of common stock reserved for the issuance of restricted stock, restricted stock awards, restricted stock units, stock appreciation rights, performance awards, deferred stock, and options (incentive stock options ("ISOs") or nonstatutory stock options ("NSOs")) to eligible participants. The 2009 Plan provides that on the first day of each fiscal year the number of shares available for issuance shall increase by an amount equal to the lesser of 744,063 shares or 3% of the outstanding shares of common stock on the last day of the immediately preceding fiscal year or a lesser amount as may be determined by the Board of Directors. Pursuant to this provision, in January 2012, the number of shares of common stock authorized for issuance under the 2009 Plan increased by an additional 681,295. To date, both ISOs and NSO's have been granted at a price per share not less than the fair market value at the date of grant. Options granted typically vest and become fully exercisable over periods ranging from one to four years. Options granted are generally exercisable for up to 10 years. The Company began granting restricted stock units ("RSUs") to its employees in November 2010. RSUs typically vest and become exercisable annually, based on a one to four year total vesting term.

In June 2011, the President and Chief Executive Officer ("CEO") resigned his position as CEO, and agreed to serve as the Executive Chairman of the Board of Directors ("Chairman"). Under the terms of the Company's amended and restated offer letter agreement with this executive in May 2011, a stock option for 214,000 shares, previously granted to this executive in January 2010, was modified, resulting in the cancellation of 171,200 unvested shares. The Company reversed \$1.4 million in stock-based compensation expense that had previously been incurred on these shares. The remaining 42,800 shares were revalued as of the modification date and were scheduled to vest ratably over 24 months

OPENTABLE, INC.
NOTES TO CONSOLIDATED FINANCIAL STATEMENTS (Continued)
YEARS ENDED DECEMBER 31, 2011, 2010 AND 2009

10. Stockholders' Equity (Continued)

from the modification date. In December 2011, this same executive resigned his position as Chairman, and agreed to serve only in the capacity as a member of the Board of Directors. Under the terms of a letter agreement with this executive in December 2011, the above stock option grant was modified again, resulting in the cancellation of 32,100 unvested shares and a reversal of \$1.2 million in stock-based compensation expense. The remaining 10,700 shares were revalued as of the second modification date, and \$0.2 million of stock-based compensation expense was recognized in the fourth quarter of 2011 in conjunction with these shares being fully vested.

Under the 1999 Stock Plan, which expired in May 2009, the Company granted 342,574 performance-based stock options to two executives. The first option was granted in November 2005 for 244,974 shares at an exercise price of \$1.50 per share. The second option was granted in July 2006 for 97,600 shares at an exercise price of \$1.50 per share. The grant-date fair value for the first option, based on the Black-Scholes valuation model (using a 50% volatility factor, 6.11 years estimated life of the option, exercise price of \$1.50, 0% dividend yield and 4.57% risk-free interest rate) was \$380,000. The fair value is to be amortized over the period during which management has estimated the performance metrics will be achieved. For the first option, stock-based compensation expense in the amount of (\$83,000), (\$43,000) and \$68,000 was recognized (reversed) in the years ended December 31, 2011, 2010 and 2009, respectively. As of December 31, 2010, there was no expectation of achievement of one of the performance metrics associated with the first option. As such, all prior expense associated with this one performance metric, in the amount of \$58,000, was reversed during the first quarter of 2010 and no additional expense related to this performance metric has been recognized during 2010 or 2011. In the fourth quarter of 2011, the Company concluded that there was no expectation that the balance of the performance metrics would be earned and all previously booked expense on the unvested shares, in the amount of (\$88,000), was reversed. Additionally, the executive to whom this option was granted ceased working for the Company during the fourth quarter of 2011. As such, all unvested shares were cancelled and returned to the plan. As of December 31, 2011, there are no outstanding shares pertaining to the first performance-based option grant. The grant-date fair value for the second option, based on the Black-Scholes valuation model (using a 50% volatility factor, 6.26 estimated life of the option, exercise price of \$1.50, 0% dividend yield and 5.05% risk-free interest rate) was \$255,000. The fair value is to be amortized over the period during which management has estimated the performance metrics will be achieved by. For the second option, stock-based compensation expense in the amount of \$0, \$0 and (\$158,000) was recognized (reversed) in the years ended December 31, 2011, 2010 and 2009, respectively. As of December 31, 2009, there was no expectation of achievement of the performance metrics associated with the second option. As such, all prior expense associated with the second option, in the amount of \$184,000, was reversed during the fourth quarter of 2009 and no additional expense has been recognized during 2010 or 2011.

OPENTABLE, INC.
NOTES TO CONSOLIDATED FINANCIAL STATEMENTS (Continued)
YEARS ENDED DECEMBER 31, 2011, 2010 AND 2009

10. Stockholders' Equity (Continued)

A summary of the Company's stock option activity follows:

	<u>Number of Shares</u>	<u>Weighted Average Exercise Price</u>	<u>Term (In Years)</u>	<u>Intrinsic Value</u>
Outstanding—January 1, 2009	2,417,850	\$ 7.31		
Granted (weighted average fair value of \$13.66) . .	150,979	26.31		
Exercised	(246,554)	4.03		
Canceled or expired	<u>(34,614)</u>	11.07		
Outstanding—December 31, 2009	2,287,661	\$ 8.84		
Granted (weighted average fair value of \$16.86) . .	1,055,948	32.70		
Exercised	(855,049)	5.96		
Canceled or expired	<u>(55,199)</u>	14.36		
Balance, December 31, 2010	2,433,361	\$20.09		
Granted (weighted average fair value of \$39.70) . .	170,932	53.54		
Exercised	(491,995)	11.06		
Canceled or expired	<u>(417,164)</u>	18.62		
Balance, December 31, 2011	1,695,134	\$26.44	<u>7.09</u>	<u>\$28,527,000</u>
Available for grant—December 31, 2011	<u>1,716,577</u>			
Options vested and expected to vest as of				
December 31, 2011	<u>1,658,425</u>	<u>\$26.58</u>	<u>7.10</u>	<u>\$27,715,000</u>
Options Exercisable as of December 31, 2011	<u>902,052</u>	<u>\$22.71</u>	<u>6.55</u>	<u>\$17,009,000</u>

The Company has computed the aggregate intrinsic value amounts disclosed in the above table based on the difference between the original exercise price of the options and the fair value of the Company's common stock of \$39.13 at December 31, 2011. The aggregate intrinsic value of awards exercised during the year ended December 31, 2011, 2010 and 2009 was \$13,813,000, \$55,171,000 and \$5,204,000, respectively.

OPENTABLE, INC.
NOTES TO CONSOLIDATED FINANCIAL STATEMENTS (Continued)
YEARS ENDED DECEMBER 31, 2011, 2010 AND 2009

10. Stockholders' Equity (Continued)

The options outstanding and exercisable as of December 31, 2011 have been segregated into ranges for additional disclosure as follows:

<u>Exercise Price</u>	<u>Options Outstanding</u>			<u>Options Vested and Exercisable</u>	
	<u>Number Outstanding</u>	<u>Weighted Average Remaining Contractual Life (Years)</u>	<u>Weighted Average Exercise Price</u>	<u>Number Exercisable</u>	<u>Weighted Average Exercise Price</u>
\$0.10 - \$5.13	244,065	4.70	\$ 3.08	140,466	\$ 4.11
\$6.25 - \$10.63	242,697	6.22	8.05	194,591	7.93
\$23.38 - \$23.38	269,011	5.52	23.38	269,011	23.38
\$24.97 - \$24.97	467,267	8.09	24.97	95,867	24.97
\$25.89 - \$49.06	282,345	8.39	37.12	138,050	39.14
\$51.62 - \$96.47	189,749	9.13	72.08	64,067	66.86
Total	<u>1,695,134</u>	7.09	\$26.44	<u>902,052</u>	\$22.71

As of December 31, 2011, total unrecognized compensation costs, adjusted for estimated forfeitures, related to non-vested stock options was \$4,496,000, which is expected to be recognized over the next 1.3 years.

Restricted Stock Units

The Company began granting Restricted Stock Units (“RSUs”) to its employees in November 2010. The cost of RSUs is determined using the fair value of the Company’s common stock on the date of grant. RSUs typically vest and become exercisable annually, based on a one to four year total vesting term. Stock-based compensation expense is amortized using a graded vesting attribution method over the requisite service period.

OPENTABLE, INC.
NOTES TO CONSOLIDATED FINANCIAL STATEMENTS (Continued)
YEARS ENDED DECEMBER 31, 2011, 2010 AND 2009

10. Stockholders' Equity (Continued)

Restricted Stock Unit Activity

A summary of the Company's RSU activity is as follows:

	<u>Outstanding Number of Shares</u>	<u>Weighted Average Remaining Contractual Term (In Years)</u>	<u>Aggregate Intrinsic Value</u>
Outstanding—January 1, 2010	—		
Granted	21,830		
Vested	—		
Cancelled	(620)	1.59	\$1,495,000
Outstanding—December 31, 2010	21,210		
Granted	178,065		
Vested	(9,944)		
Cancelled	(13,177)		
Outstanding—December 31, 2011	<u>176,154</u>	2.32	<u>\$6,893,000</u>

The Company recorded stock-based compensation expense related to RSUs of \$2,426,000 and \$140,000 for the years ended December 31, 2011 and 2010, respectively.

As of December 31, 2011, total unrecognized compensation costs, adjusted for estimated forfeitures, related to non-vested RSUs was \$6,936,000, which is expected to be recognized over the next 2.3 years.

Warrants

In connection with an equipment lease agreement, during 2000 and 1999, the lessor received four warrants from the Company to purchase shares of convertible preferred stock. During 2003, all of these outstanding warrants were converted into common stock warrants to purchase 6,315; 1,094; 41,056; and 41,362 shares of the Company's common stock, at prices of \$9.63, \$11.63, \$3.00 and \$9.63 per share, respectively. In June 2009, all four warrants were net exercised in full using a cashless exercise feature, for 69,116 shares of common stock.

During June 2003, in connection with a past financing agreement, the Company issued a warrant to purchase 88,691 shares of Series A convertible preferred stock with an exercise price of \$1.00 per share. In connection with the Company's initial public offering, the warrant was converted into a warrant to purchase 88,691 shares of common stock. In October 2009, the warrant was net exercised in full using a cashless exercise feature, for 85,483 shares of common stock.

OPENTABLE, INC.
NOTES TO CONSOLIDATED FINANCIAL STATEMENTS (Continued)
YEARS ENDED DECEMBER 31, 2011, 2010 AND 2009

11. Income Taxes

The Company accounts for income taxes under the asset and liability method provided by ASC Topic 740, Income Taxes. Under this method, deferred tax assets and liabilities are determined based on differences between financial reporting and income tax bases of assets and liabilities, and are measured using the enacted tax rates and laws that will be in effect when the differences are expected to reverse.

The Company's geographical breakdown of its income before provision for income taxes is as follows:

	Year Ended December 31,		
	2011	2010	2009
Domestic	\$37,708,000	\$18,967,000	\$9,957,000
Foreign	(4,987,000)	(808,000)	(927,000)
Income before income taxes	<u>\$32,721,000</u>	<u>\$18,159,000</u>	<u>\$9,030,000</u>

The Company's provisions for income taxes are as follows:

	Year Ended December 31,		
	2011	2010	2009
Current Tax Expense:			
Federal	\$15,149,000	\$ 8,737,000	\$1,563,000
State	1,056,000	788,000	777,000
Foreign	(26,000)	61,000	(26,000)
Total Current Tax Expense	<u>16,179,000</u>	<u>9,586,000</u>	<u>2,314,000</u>
Deferred Tax Expense:			
Federal	(3,016,000)	(4,739,000)	1,685,000
State	(347,000)	(653,000)	(36,000)
Foreign	(1,649,000)	(114,000)	—
Total Deferred Tax Expense	<u>(5,012,000)</u>	<u>(5,506,000)</u>	<u>1,649,000</u>
Total Income Tax Expense	<u>\$11,167,000</u>	<u>\$ 4,080,000</u>	<u>\$3,963,000</u>

OPENTABLE, INC.
NOTES TO CONSOLIDATED FINANCIAL STATEMENTS (Continued)
YEARS ENDED DECEMBER 31, 2011, 2010 AND 2009

11. Income Taxes (Continued)

The difference between the Company's effective rate and the federal statutory rate was as follows:

	Year Ended December 31,		
	2011	2010	2009
Tax at federal statutory rate	35.0%	35.0%	34.0%
State tax, net of federal benefit	2.8	5.3	5.4
Foreign rate differential	0.3	(0.9)	—
Stock-based compensation	3.5	3.1	8.6
Disqualifying dispositions	(1.8)	(4.1)	(2.5)
Research and development credits	(1.1)	(9.6)	—
California enterprise zone tax credit	(0.5)	(4.1)	—
Domestic manufacturing deduction	(3.5)	(2.9)	—
Agreement with tax authority on prior years' item	—	(3.6)	—
Change in statutory tax rates	(1.2)	—	—
Other	0.6	4.3	(0.7)
Valuation allowance	—	—	(0.9)
Effective tax rate	<u>34.1%</u>	<u>22.5%</u>	<u>43.9%</u>

As of December 31, 2011 and 2010 the Company had net deferred tax assets before valuation allowance of approximately \$15,560,000 and \$10,177,000, respectively. Realization of the deferred tax assets is dependent upon future taxable income, if any, the amount and timing of which are uncertain. Management evaluates the recoverability of deferred tax assets and the amount of the valuation allowance required. The Company's valuation allowance increased by approximately \$371,000 and \$48,000 during the years ended December 31, 2011 and 2010, respectively.

OPENTABLE, INC.
NOTES TO CONSOLIDATED FINANCIAL STATEMENTS (Continued)
YEARS ENDED DECEMBER 31, 2011, 2010 AND 2009

11. Income Taxes (Continued)

The components of the Company's net deferred tax assets for federal and state income taxes at December 31 are as follows:

	<u>2011</u>	<u>2010</u>
Deferred tax assets:		
Net operating loss carryforwards	\$ 6,235,000	\$ 5,892,000
Deferred revenue	1,081,000	1,351,000
Dining rewards points	6,858,000	4,568,000
Accruals and reserves not currently deductible	7,097,000	4,660,000
Tax credits	704,000	1,037,000
Other	—	483,000
Total deferred tax assets	<u>21,975,000</u>	<u>17,991,000</u>
Deferred tax liabilities:		
Basis difference in fixed assets	(5,425,000)	(6,972,000)
State taxes	(963,000)	(842,000)
Other	(27,000)	—
Total deferred tax liabilities	<u>(6,415,000)</u>	<u>(7,814,000)</u>
Net deferred tax assets before valuation allowance	15,560,000	10,177,000
Valuation allowance	<u>(2,771,000)</u>	<u>(2,400,000)</u>
Net deferred tax asset	<u>\$12,789,000</u>	<u>\$ 7,777,000</u>

At December 31, 2011, the Company had federal and state net operating loss carryforwards of approximately \$20,727,000 and \$24,835,000, respectively. If not utilized, the federal net operating loss carryforwards will begin to expire in 2020 and the state net operating loss carryforwards will begin to expire in 2014. As a result of Topic 718, Stock Compensation, the table of deferred tax assets and liabilities shown above does not include certain deferred tax assets as of December 31, 2011 and 2010 that arose directly from tax deductions related to equity compensation in excess of compensation recognized for financial reporting. Equity will be increased by approximately \$7,876,000 if and when such deferred tax assets are ultimately realized. Utilization of the net operating loss carryforwards are subject to annual limitation due to the ownership change limitations provided by the Internal Revenue Code of 1986, as amended and similar state provisions.

As of December 31, 2011, the Company's federal research and development credit carryforwards for income tax purposes were approximately \$2,950,000 of which \$776,000 will be credited directly to additional paid-in capital upon utilization. These credit carryforwards will begin to expire in 2019 if not utilized.

As of December 31, 2011, the Company's California research and development credit carryforwards for income tax purposes were approximately \$2,911,000 of which \$630,000 will be credited directly to additional paid-in capital upon utilization. These carryforwards can be carried over indefinitely. In addition, the Company's California Enterprise Zone credit carryforwards for income tax purposes were approximately \$982,000 which if not utilized, will begin to expire in 2020.

OPENTABLE, INC.
NOTES TO CONSOLIDATED FINANCIAL STATEMENTS (Continued)
YEARS ENDED DECEMBER 31, 2011, 2010 AND 2009

11. Income Taxes (Continued)

The Company has \$14,077,000 in unrecognized tax benefits related to limitations on its net operating loss carryforwards. Applicable limitations have been incorporated and certain net operating losses will not be available. As of December 31, 2011, it was considered more likely than not that the Company's deferred tax assets would be realized with the exception of certain United Kingdom net operating losses of approximately \$10,460,000 with indefinite life and \$155,000 foreign tax credit carryovers which begin to expire in 2018, as the Company cannot forecast sufficient future taxable income or foreign source income to realize these deferred tax assets. The valuation allowance of approximately \$2,771,000 as of December 31, 2011 will result in an income tax benefit if and when the Company concludes it is more likely than not that the related deferred tax assets will be realized.

It is the practice and the intention of the Company to indefinitely reinvest the earnings of its foreign subsidiaries in those operations. As of December 31, 2011, the excess of the amount for financial reporting over the tax basis of investment in these foreign subsidiaries is insignificant and the determination of the unrecognized deferred tax liability is not currently practical and the amount is not expected to be material.

A reconciliation of the beginning and ending amounts of unrecognized income tax benefits during the twelve month periods ending December 31, 2011, 2010 and 2009 is as follows:

	<u>2011</u>	<u>2010</u>	<u>2009</u>
Balance of unrecognized tax benefits at January 1	\$17,585,000	\$14,963,000	\$15,020,000
Additions for tax positions related to current year	548,000	424,000	—
Additions for tax positions related to prior year	—	2,864,000	—
Reductions for tax positions of prior years	(485,000)	(666,000)	(57,000)
Balance of unrecognized tax benefits at December 31	<u>\$17,648,000</u>	<u>\$17,585,000</u>	<u>\$14,963,000</u>

In the event that certain unrecognized tax benefits are recognized, the effective tax rate will be affected. Approximately \$17,105,000 and \$16,471,000 of unrecognized tax benefit would impact the effective tax rate at December 31, 2011 and 2010, respectively, if recognized. The Company's policy is to classify interest accrued or penalties related to unrecognized tax benefits as a component of income tax expense. The Company accrued approximately \$200,000 and \$124,000 of interest and penalties related to estimated obligations based upon the tax positions taken in its tax returns at December 31, 2011 and 2010, respectively. Due to the pending completion of a recent state income tax examination, the Company anticipates that it is reasonably possible that there will be a decrease to the Company's unrecognized tax benefit position up to \$747,000 within the next 12 months of the reporting date because of an expected settlement with the tax authorities.

All tax years remain open to examination by major taxing jurisdictions to which the Company is subject. The Company files a federal and many state returns. The Company does not anticipate significant changes to its uncertain tax positions through the next fiscal year.

OPENTABLE, INC.
NOTES TO CONSOLIDATED FINANCIAL STATEMENTS (Continued)
YEARS ENDED DECEMBER 31, 2011, 2010 AND 2009

12. Employee Benefit Plan

In 1999, the Company adopted a defined contribution plan that is intended to qualify under section 401(k) of the Internal Revenue Code. The 401(k) plan provides retirement benefits for eligible employees. The 401(k) plan stipulates that eligible employees may elect to contribute to it upon date of hire. The Company began matching employee contributions under the terms of the 401(k) plan in 2007. Matching contributions totaled \$164,000, \$130,000 and \$101,000 for the years ended December 31, 2011, 2010 and 2009, respectively.

13. Segment Information

The Company operates in one industry—online reservations and guest management solutions. The Company has two reportable segments: North America and International, as defined by Topic 280—Segment Reporting. Reportable segments have been identified based on how management makes operating decisions, assesses performance and allocates resources. The chief executive officer acts as the chief operating decision maker on behalf of both segments. The Company does not allocate assets discretely by reportable segments, and reviews asset information on a global basis, not by segment.

OPENTABLE, INC.
NOTES TO CONSOLIDATED FINANCIAL STATEMENTS (Continued)
YEARS ENDED DECEMBER 31, 2011, 2010 AND 2009

13. Segment Information (Continued)

Summarized financial information concerning the reportable segments is as follows:

	<u>North America Segment(1)</u>	<u>International Segment</u>	<u>Total Consolidated</u>
<i>Year ended December 31, 2011</i>			
Revenues—reservations	\$ 62,751,000	\$ 11,464,000	\$ 74,215,000
Revenues—subscription	44,784,000	5,983,000	50,767,000
Revenues—other	11,119,000	3,417,000	14,536,000
Total revenues	118,654,000	20,864,000	139,518,000
Income (loss) from operations	44,007,000	(11,384,000)	32,623,000
Interest income	85,000	2,000	87,000
Depreciation and amortization expense	6,852,000	5,153,000	12,005,000
Purchases of property, equipment and software	6,960,000	2,624,000	9,584,000
<i>Year ended December 31, 2010</i>			
Revenues—reservations	\$ 43,920,000	\$ 3,600,000	\$ 47,520,000
Revenues—subscription	38,711,000	4,414,000	43,125,000
Revenues—other	7,477,000	869,000	8,346,000
Total revenues	90,108,000	8,883,000	98,991,000
Income (loss) from operations	26,039,000	(8,121,000)	17,918,000
Interest income	216,000	—	216,000
Depreciation and amortization expense	6,036,000	1,532,000	7,568,000
Purchases of property, equipment and software	8,266,000	1,061,000	9,327,000
<i>Year ended December 31, 2009</i>			
Revenues—reservations	\$ 28,828,000	\$ 609,000	\$ 29,437,000
Revenues—subscription	32,739,000	3,115,000	35,854,000
Revenues—other	3,184,000	121,000	3,305,000
Total revenues	64,751,000	3,845,000	68,596,000
Income (loss) from operations	14,591,000	(5,907,000)	8,684,000
Interest income	351,000	—	351,000
Depreciation and amortization expense	4,752,000	476,000	5,228,000
Purchases of property, equipment and software	5,397,000	599,000	5,996,000

(1) A significant majority of the Company’s “Technology” costs are incurred in the United States and as such are allocated to the North America segment. There are no internal revenue transactions between the Company’s reporting segments.

OPENTABLE, INC.
NOTES TO CONSOLIDATED FINANCIAL STATEMENTS (Continued)
YEARS ENDED DECEMBER 31, 2011, 2010 AND 2009

13. Segment Information (Continued)

Geographical Information

The Company is domiciled in the United States and has international operations in Canada, Germany, Japan, Mexico and the United Kingdom. Information regarding the Company's operations by geographic area is presented below:

	Years Ended December 31,		
	2011	2010	2009
<i>Revenues:</i>			
United States	\$111,463,000	\$84,805,000	\$61,300,000
United Kingdom	17,078,000	6,469,000	2,636,000
International—all others	10,977,000	7,717,000	4,660,000
Total revenues	<u>\$139,518,000</u>	<u>\$98,991,000</u>	<u>\$68,596,000</u>
<i>Long-lived assets(1):</i>			
United States	\$ 12,536,000	\$12,034,000	\$ 9,872,000
United Kingdom	2,399,000	1,229,000	512,000
International—all others	2,670,000	1,715,000	1,510,000
Total long-lived assets	<u>\$ 17,605,000</u>	<u>\$14,978,000</u>	<u>\$11,894,000</u>

(1) Includes all non-current assets except deferred tax assets, goodwill and intangible assets.

The Company has no customers that individually, or in the aggregate, exceed 10% of revenues or accounts receivable as of and for any of the period presented above.

14. Selected Quarterly Data (Unaudited)

	For the Three Months Ended,							
	Dec 31, 2011	Sep 30, 2011	Jun 30, 2011	Mar 31, 2011	Dec 31, 2010	Sep 30, 2010	Jun 30, 2010	Mar 31, 2010
	(In thousands, except per share amounts)							
Revenues	\$37,165	\$34,356	\$34,290	\$33,707	\$30,767	\$24,520	\$22,453	\$21,251
Income from operations	10,779	5,808	9,522	6,514	5,414	4,554	4,184	3,766
Net income	6,988	4,056	6,325	4,185	5,136	3,835	2,584	2,524
Net income per share:								
Basic	<u>\$ 0.30</u>	<u>\$ 0.17</u>	<u>\$ 0.27</u>	<u>\$ 0.18</u>	<u>\$ 0.22</u>	<u>\$ 0.17</u>	<u>\$ 0.11</u>	<u>\$ 0.11</u>
Diluted	<u>\$ 0.29</u>	<u>\$ 0.17</u>	<u>\$ 0.26</u>	<u>\$ 0.17</u>	<u>\$ 0.21</u>	<u>\$ 0.16</u>	<u>\$ 0.11</u>	<u>\$ 0.11</u>

ITEM 9. CHANGES IN AND DISAGREEMENTS WITH ACCOUNTANTS ON ACCOUNTING AND FINANCIAL DISCLOSURE

None.

ITEM 9A. CONTROLS AND PROCEDURES

Evaluation of Disclosure Controls and Procedures

Our management, with the participation of our Chief Executive Officer and our Chief Financial Officer, evaluated the effectiveness of our disclosure controls and procedures as of December 31, 2011. The term “disclosure controls and procedures,” as defined in Rules 13a-15(e) and 15d-15(e) under the Exchange Act, means controls and other procedures of a company that are designed to ensure that information required to be disclosed by a company in the reports that it files or submits under the Exchange Act is recorded, processed, summarized and reported, within the time periods specified in the SEC’s rules and forms. Disclosure controls and procedures include, without limitation, controls and procedures designed to ensure that information required to be disclosed by a company in the reports that it files or submits under the Exchange Act is accumulated and communicated to the company’s management, including its principal executive and principal financial officers, as appropriate to allow timely decisions regarding required disclosure. Management recognizes that any controls and procedures, no matter how well designed and operated, can provide only reasonable assurance of achieving their objectives and management necessarily applies its judgment in evaluating the cost-benefit relationship of possible controls and procedures. Based on the evaluation of our disclosure controls and procedures as of December 31, 2011, our Chief Executive Officer and Chief Financial Officer concluded that, as of such date, our disclosure controls and procedures were effective at the reasonable assurance level.

Management’s Annual Report on Internal Control Over Financial Reporting

Our management is responsible for establishing and maintaining adequate internal control over financial reporting to provide reasonable assurance regarding the reliability of our financial reporting and the preparation of financial statements for external purposes in accordance with generally accepted accounting principles.

Management assessed our internal control over financial reporting as of December 31, 2011. Management based its assessment on criteria established in *Internal Control—Integrated Framework* issued by the Committee of Sponsoring Organizations of the Treadway Commission.

Based on our assessment, management has concluded that our internal control over financial reporting was effective as of December 31, 2011. The certifications of our principal executive officer and principal financial officer attached as Exhibits 31.1 and 31.2 to this report include, in paragraph 4 of such certifications, information concerning our disclosure controls and procedures and internal controls over financial reporting.

Deloitte & Touche LLP, an independent registered public accounting firm, has issued a report on our internal control over financial reporting, which is included below.

Changes in Internal Control over Financial Reporting

There was no change in our internal control over financial reporting identified in connection with the evaluation required by Rule 13a-15(d) and 15d-15(d) of the Exchange Act that occurred during the three months ended December 31, 2011 that has materially affected, or is reasonably likely to materially affect, our internal control over financial reporting.

Inherent Limitations on Effectiveness of Controls

Our management, including our Chief Executive Officer and Chief Financial Officer, believes that our disclosure controls and procedures and internal control over financial reporting are designed to provide reasonable assurance of achieving their objectives and are effective at the reasonable assurance level. However, our management does not expect that our disclosure controls and procedures or our internal control over financial reporting will prevent all errors and all fraud. A control system, no matter how well conceived and operated, can provide only reasonable, not absolute, assurance that the objectives of the control system are met. Further, the design of a control system must reflect the fact that there are resource constraints, and the benefits of controls must be considered relative to their costs. Because of the inherent limitations in all control systems, no evaluation of controls can provide absolute assurance that all control issues and instances of fraud, if any, have been detected. These inherent limitations include the realities that judgments in decision making can be faulty, and that breakdowns can occur because of a simple error or mistake. Additionally, controls can be circumvented by the individual acts of some persons, by collusion of two or more people or by management override of the controls. The design of any system of controls also is based in part upon certain assumptions about the likelihood of future events, and there can be no assurance that any design will succeed in achieving its stated goals under all potential future conditions; over time, controls may become inadequate because of changes in conditions, or the degree of compliance with policies or procedures may deteriorate. Because of the inherent limitations in a cost effective control system, misstatements due to error or fraud may occur and not be detected.

REPORT OF INDEPENDENT REGISTERED PUBLIC ACCOUNTING FIRM

To the Board of Directors and Stockholders of
OpenTable, Inc.
San Francisco, California

We have audited the internal control over financial reporting of OpenTable, Inc. and subsidiaries (collectively, the “Company”) as of December 31, 2011, based on criteria established in *Internal Control—Integrated Framework* issued by the Committee of Sponsoring Organizations of the Treadway Commission. The Company’s management is responsible for maintaining effective internal control over financial reporting and for its assessment of the effectiveness of internal control over financial reporting, included in the accompanying Management’s Report on Internal Control over Financial Reporting. Our responsibility is to express an opinion on the Company’s internal control over financial reporting based on our audit.

We conducted our audit in accordance with the standards of the Public Company Accounting Oversight Board (United States). Those standards require that we plan and perform the audit to obtain reasonable assurance about whether effective internal control over financial reporting was maintained in all material respects. Our audit included obtaining an understanding of internal control over financial reporting, assessing the risk that a material weakness exists, testing and evaluating the design and operating effectiveness of internal control based on the assessed risk, and performing such other procedures as we considered necessary in the circumstances. We believe that our audit provides a reasonable basis for our opinion.

A company’s internal control over financial reporting is a process designed by, or under the supervision of, the company’s principal executive and principal financial officers, or persons performing similar functions, and effected by the company’s board of directors, management, and other personnel to provide reasonable assurance regarding the reliability of financial reporting and the preparation of financial statements for external purposes in accordance with generally accepted accounting principles. A company’s internal control over financial reporting includes those policies and procedures that (1) pertain to the maintenance of records that, in reasonable detail, accurately and fairly reflect the transactions and dispositions of the assets of the company; (2) provide reasonable assurance that transactions are recorded as necessary to permit preparation of financial statements in accordance with generally accepted accounting principles, and that receipts and expenditures of the company are being made only in accordance with authorizations of management and directors of the company; and (3) provide reasonable assurance regarding prevention or timely detection of unauthorized acquisition, use, or disposition of the company’s assets that could have a material effect on the financial statements.

Because of the inherent limitations of internal control over financial reporting, including the possibility of collusion or improper management override of controls, material misstatements due to error or fraud may not be prevented or detected on a timely basis. Also, projections of any evaluation of the effectiveness of the internal control over financial reporting to future periods are subject to the risk that the controls may become inadequate because of changes in conditions, or that the degree of compliance with the policies or procedures may deteriorate.

In our opinion, the Company maintained, in all material respects, effective internal control over financial reporting as of December 31, 2011, based on the criteria established in *Internal Control—Integrated Framework* issued by the Committee of Sponsoring Organizations of the Treadway Commission.

We have also audited, in accordance with the standards of the Public Company Accounting Oversight Board (United States), the consolidated financial statements as of and for the year ended December 31, 2011 of the Company and our report dated February 24, 2012 expressed an unqualified opinion on those financial statements.

/s/ DELOITTE & TOUCHE LLP

San Jose, California
February 24, 2012

ITEM 9B. OTHER INFORMATION

None.

PART III

ITEM 10. DIRECTORS, EXECUTIVE OFFICERS AND CORPORATE GOVERNANCE

We have adopted a Code of Business Conduct and Ethics that applies to all of our directors, officers and employees, including our principal executive officer and principal financial officer. The Code of Business Conduct and Ethics is posted on our website at <http://investors.opentable.com/governance.cfm>.

We intend to satisfy the disclosure requirement under Item 5.05 of Form 8-K regarding an amendment to, or waiver from, a provision of this Code of Business Conduct and Ethics by posting such information on our website, at the address and location specified above and, to the extent required by the listing standards of The NASDAQ Stock Market, by filing a Current Report on Form 8-K with the SEC, disclosing such information.

The other information required by this item will be contained in our definitive proxy statement to be filed with the SEC in connection with our 2012 annual meeting of stockholders (the “Proxy Statement”), which is expected to be filed not later than 120 days after the end of our fiscal year ended December 31, 2011, and is incorporated in this report by reference.

ITEM 11. EXECUTIVE COMPENSATION

The information required by this item will be set forth in the Proxy Statement and is incorporated herein by reference.

ITEM 12. SECURITY OWNERSHIP OF CERTAIN BENEFICIAL OWNERS AND MANAGEMENT AND RELATED STOCKHOLDER MATTERS

The information required by this item will be set forth in the Proxy Statement and is incorporated herein by reference.

ITEM 13. CERTAIN RELATIONSHIPS AND RELATED TRANSACTIONS, AND DIRECTOR INDEPENDENCE

The information, if any, required by this item will be set forth in the Proxy Statement and is incorporated herein by reference.

ITEM 14. PRINCIPAL ACCOUNTING FEES AND SERVICES

The information required by this item will be set forth in the Proxy Statement and is incorporated herein by reference.

PART IV

ITEM 15. EXHIBITS AND FINANCIAL STATEMENT SCHEDULES

(a)(1) Financial Statements

The following are included in Item 8:

- Report of Independent Registered Public Accounting Firm
- Consolidated Balance Sheets as of December 31, 2011 and 2010
- Consolidated Income Statements for the years ended December 31, 2011, 2010 and 2009
- Consolidated Statements of Stockholders' Equity and Comprehensive Income for the years ended December 31, 2011, 2010 and 2009
- Consolidated Statements of Cash Flows for the years ended December 31, 2011, 2010 and 2009
- Notes to Consolidated Financial Statements

(a)(2) Financial Statement Schedule

All schedules are omitted because they are not applicable or the required information is shown in the financial statements or notes thereto.

(a)(3) Exhibits

See Item 15(b) below. Each management contract or compensatory plan or arrangement required to be filed has been identified.

(b) Exhibits

<u>Exhibit No.</u>	<u>Description of Exhibit</u>
2.1(1)	Share Purchase Agreement, dated September 15, 2010, among OpenTable UK Holdings Limited, OpenTable, Inc. and the shareholders of Toptable Holdings Limited.
3.1(2)	Amended and Restated Certificate of Incorporation of OpenTable, Inc.
3.2(3)	Amended and Restated Bylaws of OpenTable, Inc.
4.1(4)	Form of OpenTable, Inc.'s Common Stock Certificate.
4.2(5)	Amended and Restated Investor Rights Agreement, by and between OpenTable, Inc. and the investors listed on Exhibit A thereto, dated October 28, 2004.
10.1(5)*	OpenTable, Inc. 1999 Stock Plan.
10.2(4)*	OpenTable, Inc. 2009 Equity Incentive Award Plan.
10.3(4)*	Form of Indemnification Agreement made by and between OpenTable, Inc. and each of its directors, officers and some employees.
10.4(6)*	Amended and Restated Offer Letter, between OpenTable, Inc. and Jeffrey Jordan, dated May 2, 2011.
10.5(7)*	Letter Agreement, between OpenTable, Inc. and Jeffrey Jordan, dated December 19, 2011.
10.6(8)*	Amended and Restated Offer Letter Agreement, between OpenTable, Inc. and Matthew Roberts, dated May 2, 2011.
10.7(9)*	Amended and Restated Offer Letter Agreement, between OpenTable, Inc. and Matthew Roberts, dated January 3, 2012.

Exhibit No.	Description of Exhibit
10.8(10)*	Offer Letter, between OpenTable, Inc. and Joel Brown, dated November 7, 2001.
10.9(11)*	Offer Letter, between OpenTable, Inc. and Michael Dodson, dated March 2, 2002.
10.10(12)*	Offer Letter, between OpenTable, Inc. and Charlie McCullough, dated September 8, 2003.
10.11(13)*	Offer Letter Agreement, between OpenTable, Inc. and Duncan Robertson, dated August 1, 2011.
10.12(14)*	Amended and Restated Offer Letter Agreement, between OpenTable, Inc. and Duncan Robertson, dated January 4, 2012.
10.13(15)	Amended and Restated Loan and Security Agreement, between Comerica Bank and OpenTable, Inc., dated July 30, 2011.
10.14(16)	Office Lease, by and between OpenTable, Inc. and CFRI Market Street Corp., dated March 29, 2007, as amended May 22, 2008.
10.15(17)*	OpenTable, Inc. Independent Director Equity Compensation Policy.
10.16(18)*	2009 Equity Incentive Award Plan Form of Restricted Stock Unit Award Grant Notice and Restricted Stock Unit Award Agreement.
10.17(19)*	2009 Equity Incentive Award Plan Form of Stock Option Grant Notice and Stock Option Agreement.
21.1	List of subsidiaries.
23.1	Consent of Deloitte & Touche LLP, independent registered public accounting firm.
24.1	Power of Attorney (included on signature page to this Annual Report on Form 10-K).
31.1	Certification of Chief Executive Officer Pursuant to Rule 13-14(a) of the Securities Exchange Act of 1934 as Adopted Pursuant to Section 302 of the Sarbanes-Oxley Act of 2002.
31.2	Certification of Chief Financial Officer Pursuant to Rule 13-14(a) of the Securities Exchange Act of 1934 as Adopted Pursuant to Section 302 of the Sarbanes-Oxley Act of 2002.
32.1	Certification of Chief Executive Officer Pursuant to 18 U.S.C. Section 1350, as Adopted Pursuant to Section 906 of the Sarbanes-Oxley Act of 2002.
32.2	Certification of Chief Financial Officer Pursuant to 18 U.S.C. Section 1350, as Adopted Pursuant to Section 906 of the Sarbanes-Oxley Act of 2002.
101.INS†	XBRL Instance Document.
101.SCH†	XBRL Taxonomy Extension Schema Document.
101.CAL†	XBRL Taxonomy Extension Calculation Linkbase Document.
101.DEF†	XBRL Taxonomy Extension Definition Linkbase Document.
101.LAB†	XBRL Taxonomy Extension Label Linkbase Document.
101.PRE†	XBRL Taxonomy Extension Presentation Linkbase Document.

- (1) Incorporated by reference to Exhibit 2.1 to OpenTable, Inc.'s Form 8-K filed on September 16, 2010.
- (2) Incorporated by reference to Exhibit 3.3 to OpenTable, Inc.'s Amendment No. 4 to Registration Statement on Form S-1 (SEC File No. 333-157034) filed on May 6, 2009.

- (3) Incorporated by reference to Exhibit 3.5 to OpenTable, Inc.'s Amendment No. 4 to Registration Statement on Form S-1 (SEC File No. 333-157034) filed on May 6, 2009.
- (4) Incorporated by reference to the same numbered exhibit to OpenTable, Inc.'s Amendment No. 4 to Registration Statement on Form S-1 (SEC File No. 333-157034) filed on May 6, 2009.
- (5) Incorporated by reference to the same numbered exhibit to OpenTable, Inc.'s Registration Statement on Form S-1 (SEC File No. 333-157034) filed on January 30, 2009.
- (6) Incorporated by reference to Exhibit 99.4 to OpenTable, Inc.'s Form 8-K filed on May 3, 2011.
- (7) Incorporated by reference to Exhibit 99.1 to OpenTable, Inc.'s Form 8-K filed on December 20, 2011.
- (8) Incorporated by reference to Exhibit 99.2 to OpenTable, Inc.'s Form 8-K filed on May 3, 2011.
- (9) Incorporated by reference to Exhibit 99.1 to OpenTable, Inc.'s Form 8-K filed on January 9, 2012.
- (10) Incorporated by reference to Exhibit 10.6 to OpenTable, Inc.'s Registration Statement on Form S-1 (SEC File No. 333-157034) filed on January 30, 2009.
- (11) Incorporated by reference to Exhibit 10.7 to OpenTable, Inc.'s Registration Statement on Form S-1 (SEC File No. 333-157034) filed on January 30, 2009.
- (12) Incorporated by reference to Exhibit 10.8 to OpenTable, Inc.'s Registration Statement on Form S-1 (SEC File No. 333-157034) filed on January 30, 2009.
- (13) Incorporated by reference to Exhibit 99.2 to OpenTable, Inc.'s Form 8-K filed on August 2, 2011.
- (14) Incorporated by reference to Exhibit 99.2 to OpenTable, Inc.'s Form 8-K filed on January 9, 2012.
- (15) Incorporated by reference to Exhibit 10.2 to OpenTable, Inc.'s Form 10-Q filed on November 3, 2011.
- (16) Incorporated by reference to Exhibit 10.10 to OpenTable, Inc.'s Amendment No. 1 to Registration Statement on Form S-1 (SEC File No. 333-157034) filed on March 13, 2009.
- (17) Incorporated by reference to Exhibit 10.11 to OpenTable, Inc.'s Amendment No. 4 to Registration Statement on Form S-1 (SEC File No. 333-157034) filed on May 6, 2009.
- (18) Incorporated by reference to Exhibit 10.1 to OpenTable, Inc.'s Form 10-Q filed on November 5, 2010.
- (19) Incorporated by reference to Exhibit 10.2 to OpenTable, Inc.'s Form 10-Q filed on November 5, 2010.

* Indicates management contract or compensatory plan, contract or arrangement.

† Pursuant to Rule 406T of SEC Regulation S-T, these interactive data files are deemed not filed or part of a registration statement or prospectus for purposes of Section 11 or 12 of the Securities Act of 1933, as amended, and are deemed not filed for purposes of Section 18 of the Securities Exchange Act of 1934, as amended, and otherwise are not subject to liability under these sections.

(c) Financial Statement Schedules

Schedules have been omitted because the information required to be set forth therein is not applicable or is shown in the consolidated financial statements or notes thereto.

<u>Signature</u>	<u>Title</u>	<u>Date</u>
<u>/s/ JEFFREY JORDAN</u> Jeffrey Jordan	Director	February 24, 2012
<u>/s/ DANNY MEYER</u> Danny Meyer	Director	February 24, 2012
<u>/s/ MICHELLE PELUSO</u> Michelle Peluso	Director	February 24, 2012
<u>/s/ PAUL PRESSLER</u> Paul Pressler	Director	February 24, 2012

EXHIBIT INDEX

<u>Exhibit No.</u>	<u>Description of Exhibit</u>
2.1(1)	Share Purchase Agreement, dated September 15, 2010, among OpenTable UK Holdings Limited, OpenTable, Inc. and the shareholders of Toptable Holdings Limited.
3.1(2)	Amended and Restated Certificate of Incorporation of OpenTable, Inc.
3.2(3)	Amended and Restated Bylaws of OpenTable, Inc.
4.1(4)	Form of OpenTable, Inc.'s Common Stock Certificate.
4.2(5)	Amended and Restated Investor Rights Agreement, by and between OpenTable, Inc. and the investors listed on Exhibit A thereto, dated October 28, 2004.
10.1(5)*	OpenTable, Inc. 1999 Stock Plan.
10.2(4)*	OpenTable, Inc. 2009 Equity Incentive Award Plan.
10.3(4)*	Form of Indemnification Agreement made by and between OpenTable, Inc. and each of its directors, officers and some employees.
10.4(6)*	Amended and Restated Offer Letter, between OpenTable, Inc. and Jeffrey Jordan, dated May 2, 2011.
10.5(7)*	Letter Agreement, between OpenTable, Inc. and Jeffrey Jordan, dated December 19, 2011.
10.6(8)*	Amended and Restated Offer Letter Agreement, between OpenTable, Inc. and Matthew Roberts, dated May 2, 2011.
10.7(9)*	Amended and Restated Offer Letter Agreement, between OpenTable, Inc. and Matthew Roberts, dated January 3, 2012.
10.8(10)*	Offer Letter, between OpenTable, Inc. and Joel Brown, dated November 7, 2001.
10.9(11)*	Offer Letter, between OpenTable, Inc. and Michael Dodson, dated March 2, 2002.
10.10(12)*	Offer Letter, between OpenTable, Inc. and Charlie McCullough, dated September 8, 2003.
10.11(13)*	Offer Letter Agreement, between OpenTable, Inc. and Duncan Robertson, dated August 1, 2011.
10.12(14)*	Amended and Restated Offer Letter Agreement, between OpenTable, Inc. and Duncan Robertson, dated January 4, 2012.
10.13(15)	Amended and Restated Loan and Security Agreement, between Comerica Bank and OpenTable, Inc., dated July 30, 2011.
10.14(16)	Office Lease, by and between OpenTable, Inc. and CFRI Market Street Corp., dated March 29, 2007, as amended May 22, 2008.
10.15(17)*	OpenTable, Inc. Independent Director Equity Compensation Policy.
10.16(18)*	2009 Equity Incentive Award Plan Form of Restricted Stock Unit Award Grant Notice and Restricted Stock Unit Award Agreement.
10.17(19)*	2009 Equity Incentive Award Plan Form of Stock Option Grant Notice and Stock Option Agreement.
21.1	List of subsidiaries.
23.1	Consent of Deloitte & Touche LLP, independent registered public accounting firm.

Exhibit No.	Description of Exhibit
24.1	Power of Attorney (included on signature page to this Annual Report on Form 10-K).
31.1	Certification of Chief Executive Officer Pursuant to Rule 13-14(a) of the Securities Exchange Act of 1934 as Adopted Pursuant to Section 302 of the Sarbanes-Oxley Act of 2002.
31.2	Certification of Chief Financial Officer Pursuant to Rule 13-14(a) of the Securities Exchange Act of 1934 as Adopted Pursuant to Section 302 of the Sarbanes-Oxley Act of 2002.
32.1	Certification of Chief Executive Officer Pursuant to 18 U.S.C. Section 1350, as Adopted Pursuant to Section 906 of the Sarbanes-Oxley Act of 2002.
32.2	Certification of Chief Financial Officer Pursuant to 18 U.S.C. Section 1350, as Adopted Pursuant to Section 906 of the Sarbanes-Oxley Act of 2002.
101.INS†	XBRL Instance Document.
101.SCH†	XBRL Taxonomy Extension Schema Document.
101.CAL†	XBRL Taxonomy Extension Calculation Linkbase Document.
101.DEF†	XBRL Taxonomy Extension Definition Linkbase Document.
101.LAB†	XBRL Taxonomy Extension Label Linkbase Document.
101.PRE†	XBRL Taxonomy Extension Presentation Linkbase Document.
(1)	Incorporated by reference to Exhibit 2.1 to OpenTable, Inc.'s Form 8-K filed on September 16, 2010.
(2)	Incorporated by reference to Exhibit 3.3 to OpenTable, Inc.'s Amendment No. 4 to Registration Statement on Form S-1 (SEC File No. 333-157034) filed on May 6, 2009.
(3)	Incorporated by reference to Exhibit 3.5 to OpenTable, Inc.'s Amendment No. 4 to Registration Statement on Form S-1 (SEC File No. 333-157034) filed on May 6, 2009.
(4)	Incorporated by reference to the same numbered exhibit to OpenTable, Inc.'s Amendment No. 4 to Registration Statement on Form S-1 (SEC File No. 333-157034) filed on May 6, 2009.
(5)	Incorporated by reference to the same numbered exhibit to OpenTable, Inc.'s Registration Statement on Form S-1 (SEC File No. 333-157034) filed on January 30, 2009.
(6)	Incorporated by reference to Exhibit 99.4 to OpenTable, Inc.'s Form 8-K filed on May 3, 2011.
(7)	Incorporated by reference to Exhibit 99.1 to OpenTable, Inc.'s Form 8-K filed on December 20, 2011.
(8)	Incorporated by reference to Exhibit 99.2 to OpenTable, Inc.'s Form 8-K filed on May 3, 2011.
(9)	Incorporated by reference to Exhibit 99.1 to OpenTable, Inc.'s Form 8-K filed on January 9, 2012.
(10)	Incorporated by reference to Exhibit 10.6 to OpenTable, Inc.'s Registration Statement on Form S-1 (SEC File No. 333-157034) filed on January 30, 2009.
(11)	Incorporated by reference to Exhibit 10.7 to OpenTable, Inc.'s Registration Statement on Form S-1 (SEC File No. 333-157034) filed on January 30, 2009.
(12)	Incorporated by reference to Exhibit 10.8 to OpenTable, Inc.'s Registration Statement on Form S-1 (SEC File No. 333-157034) filed on January 30, 2009.

- (13) Incorporated by reference to Exhibit 99.2 to OpenTable, Inc.'s Form 8-K filed on August 2, 2011.
- (14) Incorporated by reference to Exhibit 99.2 to OpenTable, Inc.'s Form 8-K filed on January 9, 2012.
- (15) Incorporated by reference to Exhibit 10.2 to OpenTable, Inc.'s Form 10-Q filed on November 3, 2011.
- (16) Incorporated by reference to Exhibit 10.10 to OpenTable, Inc.'s Amendment No. 1 to Registration Statement on Form S-1 (SEC File No. 333-157034) filed on March 13, 2009.
- (17) Incorporated by reference to Exhibit 10.11 to OpenTable, Inc.'s Amendment No. 4 to Registration Statement on Form S-1 (SEC File No. 333-157034) filed on May 6, 2009.
- (18) Incorporated by reference to Exhibit 10.1 to OpenTable, Inc.'s Form 10-Q filed on November 5, 2010.
- (19) Incorporated by reference to Exhibit 10.12 to OpenTable, Inc.'s Form 10-Q filed on November 5, 2010.

* Indicates management contract or compensatory plan, contract or arrangement.

† Pursuant to Rule 406T of SEC Regulation S-T, these interactive data files are deemed not filed or part of a registration statement or prospectus for purposes of Section 11 or 12 of the Securities Act of 1933, as amended, and are deemed not filed for purposes of Section 18 of the Securities Exchange Act of 1934, as amended, and otherwise are not subject to liability under these sections.

